

THE FACTS ABOUT FORD.



Drive quality.

FACT: On top of earning 8 *Consumers Digest* "Best Buy" awards for 2009 models, Ford Motor Company is **unsurpassed** by Toyota and Honda when it comes to quality.¹



Drive green.

FACT: Ford builds the **most fuel-efficient midsize sedan** in America (Fusion Hybrid: 41 mpg city)² and the **most fuel-efficient SUV** on the planet (Escape Hybrid: 34 mpg city).³



Drive safe.

FACT: No other car company offers you more vehicles that have received both 2009 IIHS "Top Safety Pick" and NHTSA 5-Star crash test ratings.⁴



Drive smart.

FACT: The voice-activated **Ford SYNC** customizable media system and **EcoBoost™ V6 engines** are just a few of the innovative technologies you can only find in a Ford.

Visit fordvehicles.com to learn more.



Drive one.



Printed in USA. Please recycle.

10EDGCA7 ©2009 Ford Motor Company

¹Based on cumulative survey data of 2008 MY Ford and competitive owners at 3 months of service in 3 surveys conducted 9/07-5/08. ²EPA-estimated 23 mpg city/34 hwy., 27 mpg combined, Fusion S 1-4 automatic; 41 mpg city/36 hwy., Fusion Hybrid. Actual mileage will vary. Midsize class per R. L. Polk. ³Based on unadjusted city fuel economy from EPA (10/08) and VCA (5/08). 2009 EPA-estimated 34 mpg city/31 hwy. for Escape Hybrid FWD. Excluding vehicles built for Mazda. ⁴Based on NHTSA 5-Star ratings for all 4 crash test categories. Star ratings are part of the U.S. Department of Transportation's Safercar.gov program (www.safercar.gov).



THE EDGE

YOU WANT UNIQUE, STANDOUT LOOKS. YOU WANT TO GET UP TO SPEED AND RIDE LIKE A SPORTS SEDAN. YOU WANT THE ASSURANCE OF TOP SAFETY RANKINGS. YOU WANT YOUR CROSSOVER TO HANDLE EVERYTHING YOU THROW AT IT – AND IN IT. YOU WANT *THE EDGE*.

AESTHETIC & ATHLETIC



edge limited \ tuxedo black metallic \ available equipment

in **MOTION**
it stirs **Emotion.**

Edge Sport is rolling sculpture.

Wheels glistening as brilliantly as the 3-bar grille.

Chiseled lines with unique body-color fascias and trim.

A **monochromatic** paint scheme, front to back –

Punctuated with wide, bright dual exhaust tips.

Interior harmony is synthesized by Ambient Lighting

And **exclusive Alcantara® Grey** seat inserts.

Punch it up with this optional tandem: **22" wheels,**

Plus a **performance-tuned** suspension.

Sport sizzles.



edge sport \ sport blue metallic \ available equipment

265 hp up to **24**
mpg hwy.*



QUICK. efficient.

The power of 6. As in a die-cast, aluminum-block **V6 engine**. Good for an impressive 265 horses and teamed with a sophisticated **6-speed automatic**. Tap into torque across the band: merges, passes – no sweat. The **fully independent suspension** facilitates handling. It features hydro-bushings and an isolated subframe attached at, you guessed it, 6 locations. Smooth and precise never had it so good.

Driving confidence can be elevated to enthusiast level on **Edge Sport**. Courtesy of optional 22" wheels, wrapped in high-performance **Pirelli® Scorpion Zero** tires, together with a custom-tuned suspension that incorporates a bigger front stabilizer bar and enhanced shocks, springs and steering. **A corner carver.**

*2009 EPA-estimated, FWD.

edge limited \ ingot silver metallic \ available equipment

PICKS UP YOUR VOICE.
PLOTS THE BEST ROUTE.
PLAYS TUNES ON REQUEST.
PLACES CALLS TOO.

NAVIGATION WITH SIRIUS TRAVEL LINK™

Displayed on a generous **6.5" LCD touch screen**, the optional GPS-linked Navigation System offers voice activation for everything from driving directions to accessing music. It also provides nearly **10 gigs of storage space** for photos (on your home page) and music (up to 2400 songs). Class-exclusive¹ SIRIUS Travel Link is the source for **up-to-the-minute** local traffic, weather, fuel prices, sports scores and movie listings.² So you're always in the know.

SIRIUS® SATELLITE RADIO.

Standard on Edge SEL, Limited and Sport, SIRIUS Satellite Radio² comes with a 6-month subscription: Surf more than **130 channels** – including **100% commercial-free** music, plus the best of sports, news, talk and entertainment, coast-to-coast.

¹Medium 5-Passenger CUV class with standard 6-cylinder engine. ²Real-time traffic monitoring available in select markets. Some features are unavailable while driving. Subscription required after introductory 6 months expire. Service only available in the 48 contiguous United States and the District of Columbia. ³The vehicle's electrical system (including the battery), the wireless service provider's signal, and a connected mobile phone must all be available and operating for 911 Assist to function properly. These systems may become damaged in a crash. The paired mobile phone must be turned on, connected to SYNC, and the 911 Assist feature enabled in order for 911 to be dialed. ⁴Driving while distracted can result in loss of vehicle control. Only use mobile phones and other devices, even with voice commands, when it is safe to do so. ⁵SYNC with Traffic, Directions and Information available Summer 2009. These SYNC services not available with SIRIUS Travel Link or Navigation System. See your dealer for details.



you talk. SYNC LISTENS.™

FORD SYNC® WITH 911 ASSIST,™³
PLUS NEW TRAFFIC, DIRECTIONS AND INFORMATION.

The available, award-winning Ford SYNC system – developed in association with Microsoft® – works with your paired **Bluetooth®-enabled mobile phone** and **digital media player** or **USB drive**. Make and take calls, play music by artist or genre, and more – all with the touch of a button and **simple voice commands**.⁴

SYNC also features these convenient **Driver Services**:

- 911 Assist
- Turn-by-turn directions⁵
- Vehicle Health Reports
- Business searches⁵
- Up-to-the-minute weather⁵
- Personalized business, sports, traffic alerts⁵, entertainment news and more⁵

With 911 Assist, the system can make an emergency call from your phone if any airbag has deployed. And, unlike other systems that send you to a call center first, SYNC connects you directly to a 911 operator. SyncMyRide.com has all the latest news.

SYNC
Powered by **Microsoft**



RICH, LEATHER-TRIMMED LIVING ROOM...

edge **limited** \ charcoal black leather-trimmed **interior** \ available **equipment**



...WITH A FRESH INFUSION OF SIENNA.

The stylish seating surfaces are accented with **contrast stitching** – same holds true for the leather-wrapped steering wheel and shift knob. Floor mats are of the premium carpeted variety, embellished with the “EDGE” logo. There’s also a hint of **dark, brushed-aluminum** with this engaging new Limited Interior Appearance Package option.



unlimited Possibilities.

Where to begin with Edge Limited? How about with supple **leather trim** and front seats that are power, **heated** and **memory**-activated.* Sideview mirrors follow suit, adding security approach lamps to the mix. There's **9-speaker** Premium Sound and Ford SYNC® infotainment for your ears. Aluminum accents and changeable Ambient Lighting for your eyes. A particulate air filter for the vast living room helps ensure clean, **dual-zone** climate control. And so on. And so on. And...

*Memory feature for driver seat only.

enriching. enchanting. **ENGAGING.**

Edge can do it all: All depends on what you envision.



a



b



c



d



e

a. The handy **POWER LIFTGATE** raises and lowers at the simple press of one of 3 buttons – either on your key fob, on the dashboard or in the cargo area. It's an optional convenience.

b. The standard **BLIND SPOT MIRRORS** integrate an innovative convex spotter that assists the driver by increasing visibility along each side of the vehicle.

c. A real eye-opener: The **VISTA ROOF™** encompasses nearly 40% of the top and creates a daylight opening 3X larger than the average moonroof. The front panel powers open; the rear stays put. This panoramic option also features dual power sunshades.

d. **DUAL INVISION™ DVD HEADRESTS** – available as a Ford Licensed Accessory – work independently and tout 7" adjustable monitors, game ports, infrared headphones and more.

e. **ADAPTABILITY** is the word for Edge – equipped with a 60/40 split fold-flat, reclining rear seat; folding center armrest; and a time-saving EasyFold™ rear seatback release on SEL, Limited and Sport.



it's a standout.

edge limited \ red candy metallic with tinted clearcoat \ available equipment



the ABCs of **AWD.**

WORKS FOR MORE PEACE OF MIND IN ALL KINDS OF WEATHER, OR FOR GREATER HANDLING FINESSE EVEN ON DRY PAVEMENT: **ALL-WHEEL DRIVE (AWD)** IS OPTIONAL TO CONSTANTLY MONITOR CONDITIONS AND ACT IN AN INSTANT, **ON-DEMAND.** THE IDEAL AMOUNT OF TORQUE IS DELIVERED TO ALL 4 WHEELS, WELL BEFORE ANY SLIPPAGE. FACT IS, THIS AWD SYSTEM HELPS KEEP YOU MOVING – EVEN IF ONLY ONE WHEEL **MAINTAINS TRACTION.**

edge sel \ ingot silver metallic \ available equipment

TOP SAFETY PICK.

3 YEARS RUNNING.

Once, twice, three times a *TOP SAFETY PICK* – for the 2007–2009 model years – per the Insurance Institute for Highway Safety (IIHS). Edge achieves the **highest rating possible** in rigorous front, side and rear crash tests. Kudos to all those side-intrusion door beams, energy-absorbing door-trim panels, and bumper-to-bumper flow-through rails. Passenger compartment energy management at its finest.

a SAFETY CANOPY® SYSTEM

The patented Safety Canopy System deploys **side-curtain airbags** to enhance protection for outboard-seated occupants in the event of certain side-impact collisions.

b PERSONAL SAFETY SYSTEM™

With its sophisticated network of sensors and **front airbags**, the Personal Safety System enhances protection for the driver and front passenger in the event of certain frontal collisions. **Front-seat side airbags** are standard too.

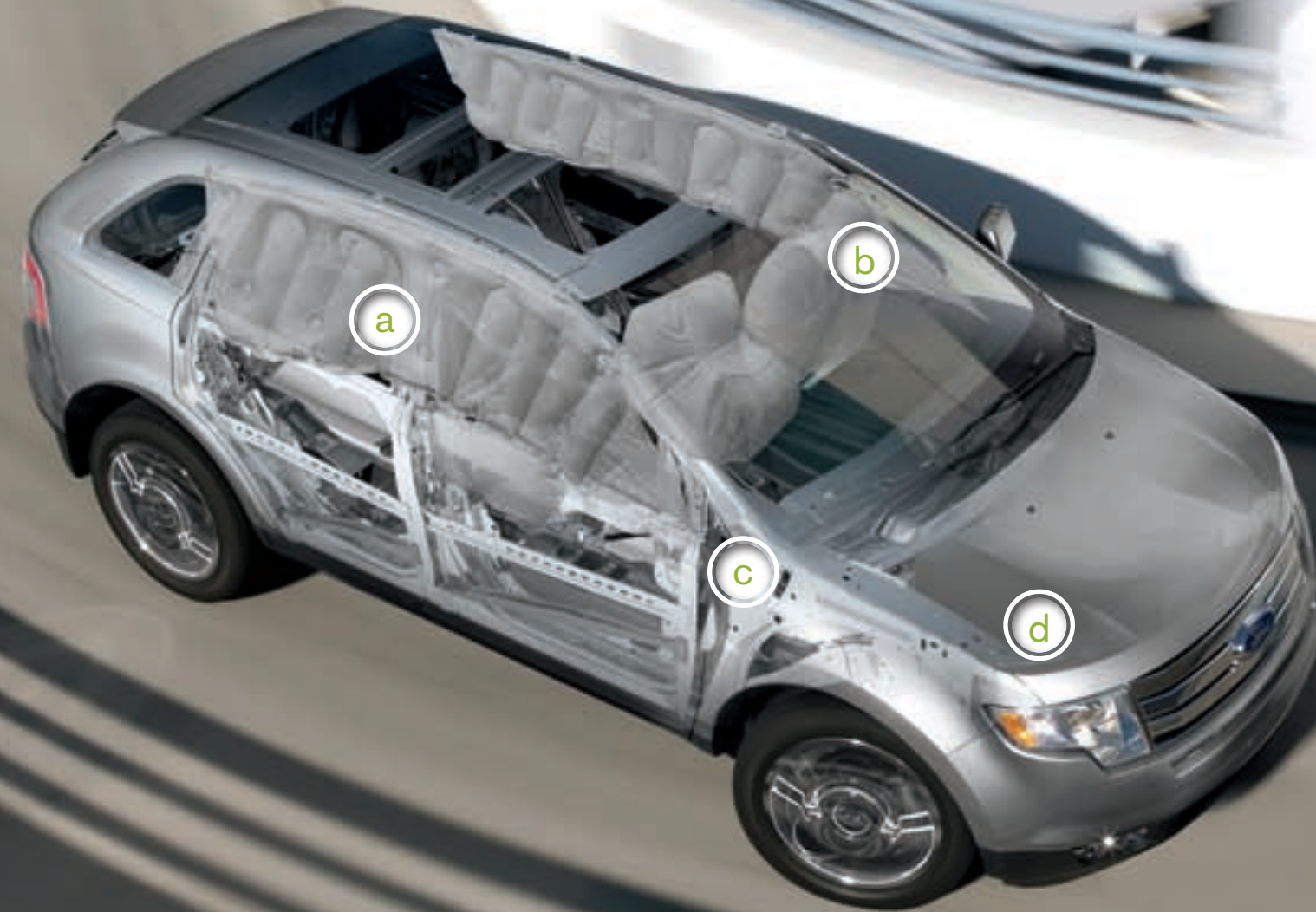
c ADVANCETRAC® WITH RSC® (ROLL STABILITY CONTROL™)

The industry's only such system with **2 gyroscopic sensors** – one of which is a unique vehicle-roll motion sensor – AdvanceTrac with class-exclusive RSC¹ works with the 4-wheel disc **Anti-lock Brake System (ABS)**, **traction control** and **yaw control**. It automatically determines when to apply individual brakes and modify engine power to help keep all 4 wheels firmly planted.

d SOS POST-CRASH ALERT SYSTEM™

In the event of an airbag deployment or safety belt pretensioner activation in certain collisions, the SOS Post-Crash Alert System automatically **flashes the hazard lights** and **sounds the horn** to attract attention.²

¹Remember that even advanced technology cannot overcome the laws of physics. It's always possible to lose control of a vehicle due to inappropriate driver input for the conditions. For more information on AdvanceTrac with RSC, visit fordvehicles.com. ²SOS hardware may become damaged or the battery may lose power in a crash, which could prevent operation. Not all crashes will activate an airbag or safety belt pretensioner.



Specs.

DIMENSIONS & CAPACITIES

| Exterior | |
|----------------------------------|--------|
| Wheelbase | 111.2" |
| Length | 185.7" |
| Height (with options) | 69.0" |
| Width – Excluding mirrors | 75.8" |
| Width – Including mirrors | 87.5" |
| Width – Mirrors folded | 79.1" |
| Minimum running ground clearance | 7.9" |
| Liftover height | 30.8" |
| Overhang – Front | 37.0" |
| Overhang – Rear | 37.5" |

| Interior | front/rear |
|---------------------------------|-------------|
| Head room (without Vista Roof™) | 40.0"/39.3" |
| Shoulder room | 58.9"/58.8" |
| Hip room | 54.8"/56.3" |
| Leg room | 40.7"/39.6" |

| Capacities | |
|---|-------|
| Passenger volume (cu. ft.) | 108.4 |
| Cargo volume behind front seats (cu. ft.) | 69.0 |
| Cargo volume behind rear seats (cu. ft.) | 32.2 |
| Fuel capacity (gal.) | |
| FWD | 19.0 |
| AWD | 20.0 |

HORSEPOWER, TORQUE & FUEL ECONOMY¹

| 3.5L Duratec® V6 engine | |
|-------------------------|---------------------|
| Horsepower | 265 @ 6250 rpm |
| Torque (lb.-ft.) | 250 @ 4500 rpm |
| 6-speed automatic | |
| FWD | 17 mpg city/24 hwy. |
| AWD | 15 mpg city/22 hwy. |

STANDARD

Mechanical

| |
|---|
| 3.5L Duratec V6 engine with 6-speed automatic transmission |
| 4-wheel power disc brakes with Anti-lock Brake System (ABS) |
| Front-wheel drive |
| Independent front and rear suspension |
| Mini spare tire |
| Power rack-and-pinion steering |

Safety & Security

| |
|---|
| Personal Safety System™ for driver and front passenger includes dual-stage front airbags ² ; safety belt pretensioners, safety belt energy-management retractors, safety belt usage sensors, driver-seat position sensor, crash severity sensor, restraint control module and Front-Passenger Sensing System |
| AdvanceTrac® with RSC® (Roll Stability Control™) |
| Autolock |
| Battery saver with headlamps-off delay |
| Belt-Minder® front safety belt reminder |
| Child-safety rear door locks |
| Front-seat side airbags ² |
| Front height-adjustable shoulder safety belts |
| Illuminated entry system |
| LATCH – Lower anchors and tether anchors for child-safety seats (2 in rear) |
| Safety Canopy® System with side-curtain airbags ² and rollover sensor |
| SecuriLock® passive anti-theft ignition system |
| SOS Post-Crash Alert System™ flashes hazard lights and sounds horn after airbag deployment or safety belt pretensioner activation in certain collisions |
| Tire Pressure Monitoring System (excludes spare) |

Interior

| |
|---|
| 4 12-volt power points (1 each in instrument panel, center console, rear seat and cargo area) |
| Accessory delay for power features |
| Adjustable driver and front-passenger sun visors |
| Air conditioning with rear-seat vents |
| Auxiliary audio input jack |
| Cargo area hooks and net |
| Center console with deep-bin armrest, dividers, power point and 2 cupholders |
| Coat hooks (2) |
| Cupholders/beverage holders (6) |
| Dual-note electric horn |
| Front and rear carpeted floor mats |
| Front and rear dome/map lights |
| Front-passenger (1) and B-pillar (2) assist handles |
| Instrumentation (tachometer, lamp outage, low fuel warning, low washer fluid, low oil pressure, door ajar, liftgate ajar and coolant temperature indicator) |
| Map pockets in driver and front-passenger seatbacks and in all 4 door panels, with 2 beverage holders in front door panels |
| Overhead console with sunglasses holder |
| Power door locks |
| Power windows with one-touch-up/-down driver-window feature |
| Rear-seat fold-down armrest with 2 cupholders |
| Rear-window defroster |
| Steering wheel-mounted cruise control |
| Tilt and telescoping steering column |

Exterior

| |
|---|
| Chrome 3-bar grille |
| Power sideview mirrors with Blind Spot Mirrors and manual fold-away design |
| Privacy glass (rear doors, rear quarter windows and liftgate window) |
| Rear spoiler |
| Remote keyless-entry system with 2 integrated keypad transmitter remotes |
| Rocker moldings |
| Roof-mounted antenna |
| Windshield wipers – Front: variable-intermittent with washer; rear: 2-speed with washer |



EDGE SE

Equipped with select standard features, plus:

| |
|--|
| 17" painted-aluminum wheels |
| Quad-beam halogen headlamps |
| Black exterior door handles, sideview mirrors, rear spoiler and rocker moldings |
| Dual chrome exhaust tips |
| Cloth seats |
| Front bucket seats with driver manual lumbar |
| Rear 60/40 split fold-flat seat with manually reclining seatbacks and folding center armrest |
| AM/FM stereo/single-CD player with MP3 capability |

Available Option Group

Convenience Package: auto-dimming rearview mirror, automatic headlamps, SecuriCode™ keyless-entry keypad, secondary steering wheel-mounted audio controls and Reverse Sensing System + SIRIUS Satellite Radio with 6-month subscription

Available Options

| |
|---|
| All-weather floor mats |
| Black roof side rails |
| Ford SYNC® voice-activated, in-vehicle communications and entertainment system ³ |

EDGE SEL

Equipped with all standard SE features, plus:

| |
|--|
| 18" painted-aluminum wheels |
| Automatic headlamps with wiper activation |
| Body-color exterior door handles, sideview mirror accents and rear spoiler |
| SecuriCode keyless-entry keypad |
| Reverse Sensing System |
| Fog lamps with chrome bezels |
| "SEL" badge |
| Unique cloth seats |
| 6-way power driver seat |
| EasyFold™ rear seatback release |
| Auto-dimming rearview mirror |
| Illuminated visor vanity mirrors |
| AM/FM stereo/6-disc in-dash CD changer with secondary steering wheel-mounted controls and MP3 capability |
| SIRIUS Satellite Radio with 6-month subscription |
| Leather-wrapped steering wheel and shift knob |
| Message center |
| Additional chrome accents on registers |
| Unique aluminum finish on instrument panel |

Available Option Groups

| |
|---|
| 18" premium aluminum chrome-clad wheels + Ford SYNC |
| 18" premium aluminum chrome-clad wheels + Ford SYNC + Ambient Lighting + Leather Comfort Package: leather-trimmed seats, heated front bucket seats, 6-way power fold-flat front-passenger seat, and Dual-zone Electronic Automatic Temperature Control with particulate air filter |

Available Options & Packages

| |
|--|
| All-weather floor mats |
| All-Wheel Drive (AWD) |
| Black roof side rails (not available with Vista Roof) |
| Cargo Package: power liftgate and Cargo Management System ⁴ |
| Class II Trailer Tow Package: hitch receiver, larger radiator, upgraded cooling fans, and wiring harness with 4-pin connector (3500 lbs. max.) |
| Navigation Package: voice-activated with a nearly 10-gigabyte hard drive, single-disc Premium Sound System with 9 speakers, and SIRIUS Travel Link™ services with 6-month subscription ⁵ |
| Panoramic Vista Roof – 2-panel glass roof with power tilt and open features on front panel and dual power sunshades ⁴ |
| SYNC |

EDGE LIMITED

Equipped with all standard SEL features, plus:

| |
|---|
| 18" premium aluminum chrome-clad wheels |
| Heated sideview mirrors with security approach lamps and memory |
| Body-color keypad surround |
| Chrome beltline moldings |
| "LIMITED" badge |
| Leather-trimmed seats |
| 6-way power heated front buckets with driver-seat memory feature and fold-flat front-passenger seat |
| Dual-zone Electronic Automatic Temperature Control with particulate air filter |
| Ambient Lighting |
| SYNC |
| Premium Sound System with AM/FM stereo/6-disc in-dash CD changer with 9 speakers (including A-pillar-mounted tweeters and an 8" subwoofer) with 320 watts |
| Unique brushed-aluminum finish on center-stack panel and door-sill scuff plates |
| Grey Metallic-faced gauges |
| Universal Garage Door Opener |

Available Option Groups

| |
|---|
| 20" premium aluminum chrome-clad wheels + panoramic Vista Roof |
| Cargo Package + 20" premium aluminum chrome-clad wheels + panoramic Vista Roof + voice-activated Navigation System |

Available Options & Packages

| |
|--|
| All-weather floor mats |
| All-Wheel Drive (AWD) |
| Black roof side rails (not available with Vista Roof) |
| Cargo Package |
| Class II Trailer Tow Package |
| Limited Interior Appearance Package: Sienna leather-trimmed seats with contrast stitching; contrast stitching on steering wheel and shift knob; dark brushed-aluminum center-stack panel; and premium floor mats with "EDGE" logo |
| Panoramic Vista Roof |
| Voice-activated Navigation System with a nearly 10-gigabyte hard drive, single-disc Premium Sound System with 9 speakers, and SIRIUS Travel Link services with 6-month subscription |

New Vehicle Limited Warranty. We want your Ford Edge ownership experience to be the best it can be. So under this warranty, your new vehicle comes with 3-year/36,000-mile Bumper-to-Bumper Coverage, 5-year/60,000-mile Powertrain Warranty Coverage, 5-year/50,000-mile Safety Restraint Coverage, and 5-year/unlimited-mile Corrosion (Perforation) Coverage – all with no deductible. Please ask your Ford Dealer for a copy of this limited warranty.

Roadside Assistance. Covers your vehicle for 5 years or 60,000 miles, so you have the security of knowing that help may be only a phone call away should you run out of fuel, lock yourself out of the vehicle, or need towing. Your Ford Dealer can provide complete details on all of these advantages.

Ford Credit. Get the ride you want. Whether you plan to lease or finance, you'll find the choices that are right for you at Ford Credit. Ask your Ford Dealer for details or check us out at fordcredit.com.

Ford Extended Service Plan. For a purchase or lease, the Ford Extended Service Plan (ESP) gives you "Peace-of-Mind" protection designed to cover key vehicle components and protect you from the cost of unexpected repairs. Ask your dealer for a Ford ESP, the only service contract backed exclusively by Ford and honored at all Ford Lincoln Mercury dealerships.

Insurance Services. Get Ford Motor Company quality in your auto insurance. Our program offers industry-leading benefits and competitive rates. Call 1-877-367-3847, or visit us at fordvip.com for a no-obligation quote. Insurance offered by American Road Services Company (in CA, American Road Insurance Agency), a licensed agency and subsidiary of Ford Motor Company.

Comparisons based on 2009 competitive models (Medium 5-Passenger CUV class with standard 6-cylinder engine), publicly available information and Ford certification data at time of printing. Some features discussed may be optional. Vehicles shown may contain optional equipment. Features shown may be offered only in combination with other options or subject to additional ordering requirements or limitations. Dimensions shown may vary due to optional features and/or production variability. Following publication of the catalog, certain changes in standard equipment, options and the like, or product delays may have occurred which would not be included in these pages. Your Ford Dealer is the best source for up-to-date information. Ford Division reserves the right to change product specifications at any time without incurring obligations.

¹2009 EPA-estimated fuel economy. ²Always wear your safety belt and secure children in the rear seat. ³Requires Convenience Package. ⁴Requires 18" premium aluminum chrome-clad wheels. ⁵Requires Leather Comfort Package on SEL. ⁶Requires Premium Package on Sport.

Alcantara is a registered trademark of Alcantara S.p.A., Italy.

Microsoft is a registered trademark of Microsoft Corporation.

The Bluetooth word mark is a trademark of the Bluetooth SIG, Inc.

SIRIUS Travel Link is a trademark of SIRIUS XM Radio Inc. Subscriptions governed by SIRIUS Terms and Conditions at sirius.com/serviceterms.

Exterior colors.



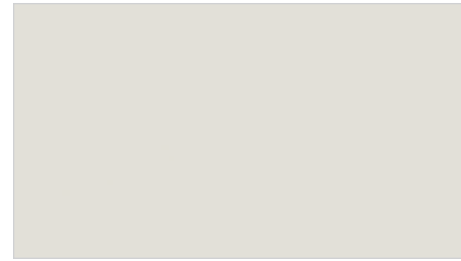
Red Candy Metallic with Tinted Clearcoat



Ingot Silver Metallic



Cinnamon Metallic



White Suede



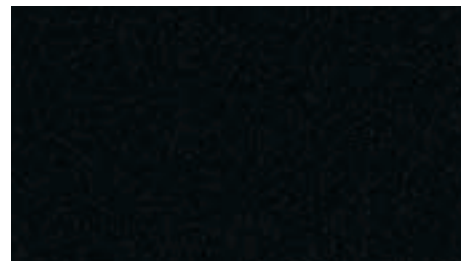
Dark Ink Blue Metallic



White Platinum Metallic Tri-Coat



Sterling Grey Metallic



Tuxedo Black Metallic



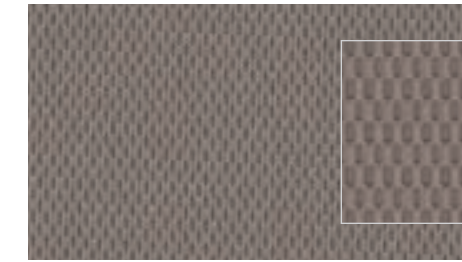
Sport Blue Metallic

| | Interior Colors | | |
|---|-----------------|---|---|
| SE | | | |
| Red Candy Metallic with Tinted Clearcoat ¹ | ● | ● | ● |
| Ingot Silver Metallic | ● | ● | ● |
| White Suede | ● | ● | ● |
| Dark Ink Blue Metallic | ● | ● | ● |
| Tuxedo Black Metallic | ● | ● | ● |
| SEL/Limited | | | |
| Red Candy Metallic with Tinted Clearcoat ¹ | ● | ● | ● |
| Ingot Silver Metallic | ● | ● | ● |
| Cinnamon Metallic | ● | ● | ● |
| White Suede ² | ● | ● | ● |
| Dark Ink Blue Metallic | ● | ● | ● |
| White Platinum Metallic Tri-Coat ¹ | ● | ● | ● |
| Sterling Grey Metallic | ● | ● | ● |
| Tuxedo Black Metallic | ● | ● | ● |
| Limited Interior Appearance Package | | | |
| Ingot Silver Metallic | ● | ● | ● |
| Cinnamon Metallic | ● | ● | ● |
| White Platinum Metallic Tri-Coat ¹ | ● | ● | ● |
| Sterling Grey Metallic | ● | ● | ● |
| Tuxedo Black Metallic | ● | ● | ● |
| Sport | | | |
| Red Candy Metallic with Tinted Clearcoat ¹ | ● | ● | ● |
| Ingot Silver Metallic | ● | ● | ● |
| Tuxedo Black Metallic | ● | ● | ● |
| Sport Blue Metallic | ● | ● | ● |
| INTERIORS: ● Camel ● Medium Light Stone ● Charcoal Black | | | |

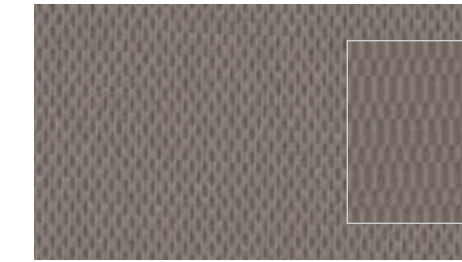
Interior colors.



Cloth - Charcoal Black with Charcoal Black inserts
Standard on SE



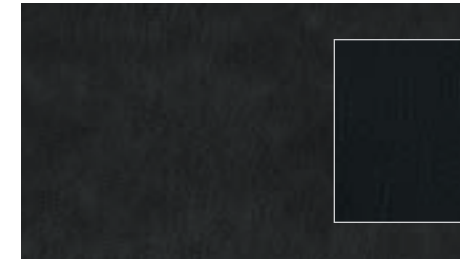
Cloth - Medium Light Stone with Medium Light Stone inserts
Standard on SE



Cloth - Medium Light Stone with Unique Medium Light Stone inserts
Standard on SEL



Cloth - Charcoal Black with Unique Charcoal Black inserts
Standard on SEL



Leather - Charcoal Black with Charcoal Black inserts
Standard on Limited, Optional on SEL



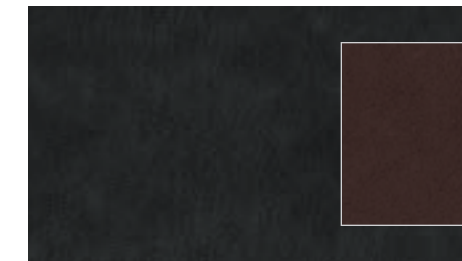
Leather - Camel with Camel inserts
Standard on Limited, Optional on SEL



Leather - Medium Light Stone with Medium Light Stone inserts
Standard on Limited, Optional on SEL



Leather - Charcoal Black with Alcantara® Grey inserts
Standard on Sport



Leather - Charcoal Black with Sienna seating surfaces
Standard with Limited Interior Appearance Package

¹Extra-cost option. ²Not available on Limited.
Colors shown are representative only. Not all colors are available on all models.
See your dealer for actual paint/trim options.

Wheels.

17" Painted-Aluminum
Standard on SE



18" Painted-Aluminum
Standard on SEL



18" Premium Aluminum Chrome-Clad
Standard on Limited, Available on SEL



20" Premium Aluminum Chrome-Clad
Standard on Sport



20" Premium Aluminum Chrome-Clad
Available on Limited



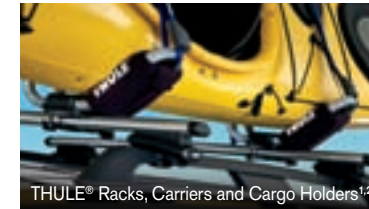
22" Bright Polished-Aluminum
Optional on Sport with sport-tuned suspension



Side Window Deflectors



Cargo-Logic® System¹



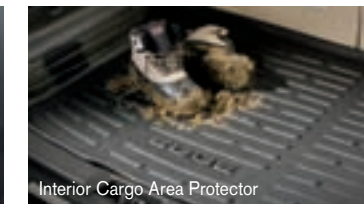
THULE® Racks, Carriers and Cargo Holders^{1,2}



Body Kit by 3dCarbon^{®1}



Dual INVISION™ DVD Headrests¹



Interior Cargo Area Protector



20" Chrome
Wheel



Interior Soft
Cargo Cooler Bag



20" Chrome
Wheel



Garmin® nūvi®
Portable Navigation Systems¹



Front
Illuminated Sill Plates

Accessories.

Also available:

- Katzkin® Leather Seat Covers¹
- SmartAlert™ GPS Tracking & Recovery¹
- Keyless Entry Keypad
- Electrochromic Mirror
- Remote Start Systems
- Vehicle Security System
- Ambient Lighting Kit
- Interior Soft Cargo Organizers (Large and Standard Size)
- Interior Rear Cargo Shade
- Grille Inserts
- Chrome Door Handles
- Graphic Stripes
- DeWALT® Toolboxes and Racks¹
- Splash Guards
- Bumper Protector
- Roof Crossbars
- Roof Rails
- EchoMaster® HitchScan™ Rear Park Assist Sensor/Hitch Step¹
- Sportz® SUV Camping Tent¹
- Wheel Locks
- Wheel Center Caps
- Trailer Hitch Balls/Draw Bars
- Trailer Wiring Harness Kit
- Wiper Shaker¹
- All-Weather Floor Mats
- Ashcup/Coin Holder/Smoker's Pack

¹Ford Licensed Accessories.
²Only available for vehicles with roof-rack side rails.
Garmin is a registered trademark of Garmin Ltd.
DeWALT is a registered trademark of DeWALT Industrial Tool Company.

To learn more about Ford Custom Accessories or to buy them online, visit fordaccessories.com.

Genuine Ford Accessories will be warranted for whichever provides you the greatest benefit: 12 months or 12,000 miles (whichever occurs first), or the remainder of your Bumper-to-Bumper 3-year/36,000-mile New Vehicle Limited Warranty. Contact your local Ford Dealer for details and a copy of the limited warranty. Ford Licensed Accessories (FLA) are warranted by the accessory manufacturer's warranty. Contact your Ford Dealer for details regarding the manufacturer's limited warranty and/or a copy of the FLA product limited warranty offered by the accessory manufacturer.