



THE FACTS ABOUT FORD.



Drive quality.

FACT: On top of earning 8 *Consumers Digest* "Best Buy" awards for 2009 models, Ford Motor Company is **unsurpassed** by Toyota and Honda when it comes to quality.¹



Drive green.

FACT: Ford builds the **most fuel-efficient midsize sedan** in America (Fusion Hybrid: 41 mpg city)² and the **most fuel-efficient SUV** on the planet (Escape Hybrid: 34 mpg city).³



Drive safe.

FACT: No other car company offers you more vehicles that have received both 2009 IIHS "Top Safety Pick" and NHTSA 5-Star crash test ratings.⁴



Drive smart.

FACT: The voice-activated **Ford SYNC** customizable media system and **EcoBoost™ V6 engines** are just a few of the innovative technologies you can only find in a Ford.

Visit fordvehicles.com to learn more.



Drive one.



Mixed Sources
Product group from well-managed forests, controlled sources and recycled wood or fiber
www.fsc.org Cert no. SW-COC-001530
© 1996 Forest Stewardship Council

Printed in USA. Please recycle.

10EXSTCAT ©2009 Ford Motor Company

¹Based on RDA Group's QORS cumulative survey at 3 months of service in 3 surveys of 2008 MY Ford and competitive owners conducted 9/07-5/08. ²EPA-estimated 23 mpg city/34 hwy., 27 mpg combined, Fusion S I-4 automatic; 41 mpg city/36 hwy., Fusion Hybrid. Actual mileage will vary. Midsize class per R. L. Polk. ³Based on unadjusted city fuel economy from EPA (10/08) and VCA (5/08). 2009 EPA-estimated 34 mpg city/31 hwy. for Escape Hybrid FWD. Excluding vehicles built for Mazda. ⁴Based on NHTSA 5-Star ratings for all 4 crash test categories. Star ratings are part of the U.S. Department of Transportation's Safercar.gov program (www.safercar.gov).

UTILIZE

BOTH SIDES OF ITS

PERSONALITY

Pickup truck capability. SUV versatility. Discover both in the 2010 Ford Sport Trac. Its utmost expression: the available **Adrenalin Package** (shown). Standout touches include a Black grille, dramatic front and rear fascias, and 20" polished-aluminum wheels. Inside, a Charcoal Black interior features **perforated leather-trimmed seats**. Utility x 2. That's Sport Trac.





POWER TO THE PAVEMENT (OR DIRT OR ROCK OR SNOW)

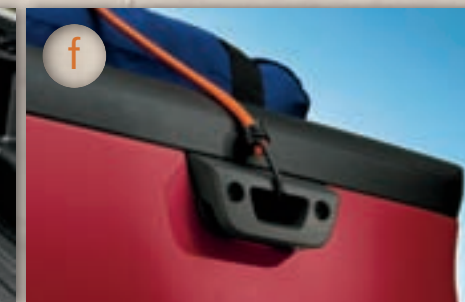
.....
Whatever your terrain, Sport Trac empowers your journey. Its available **Control Trac® 4-wheel drive** transitions easily from everyday driving to off-road crawling. Standard **Trailer Sway Control** and **AdvanceTrac® with RSC®** (Roll Stability Control™) monitor vehicle motion and take measures to help bring Sport Trac and trailer under control. Its available free-breathing V8 delivers 292 horsepower. Carry on.
.....

Sport Trac XLT in Black Pearl Slate Metallic with available equipment

ZIPLINE TO ADVENTURE

Clip it. Store it. Cover it. Lock it down. Whatever your passion, Sport Trac carries the gear for every day's adventure.

Whether your playground is the narrow streets of a city center or the upper rims of some grand canyons, Sport Trac helps you perform at your best. Inside its cab and **versatile cargo box**, there's space for everything.



a. The available hinged, **HARD, LOCKING TONNEAU COVER** can be opened just at the front or back, or removed, as needed.

b. With the available **CARGO CAGE BED EXTENDER** in place and the tailgate open, the cargo box holds another 6+ cu. ft. Close the tailgate and the extender functions as a partition.

c. The **DENT-PROOF, SCRATCH-RESISTANT MOLDED LINER** of the cargo box withstands the worst. Up to 37.5 cu. ft. of gear fits inside.

d. Sport Trac Limited 4x2 with the available V8 engine has a **MAXIMUM TOWING CAPACITY OF 7160 LBS.** when properly equipped.

e. Cargo box **GEAR BINS**, with weather-resistant lids and drain plugs, are perfect for keeping items dry – or even on ice!

f. Securing your gear is a breeze thanks to 10 **INTEGRATED TIE-DOWNS** on the Sport Trac cargo box.



OASIS OF COMFORT AND REFUGE

After your adventures, a place of refuge is welcome. Find it inside Sport Trac's spacious cabin. If needed, comfortably seat as many as 5 adults. Sport Trac Limited gets luxurious **two-tone leather trim** (Camel only; shown at left) with **heated front seats**, including a 10-way power-adjustable driver seat (with power lumbar and recline). With the flexible **60/40 split-folding rear seat**, you can seat 3 passengers, fold one side down for gear and leave the other side up, or fold the entire seat down for maximum cargo-carrying capability.



The leather-wrapped steering wheel of Sport Trac features cruise and audio system controls. On Limited models, controls for the standard voice-activated Ford SYNC® system are also included.

Sport Trac Limited in Camel with Sand inserts

FIND IT MAP IT MOVE OUT

NAVIGATION WITH SIRIUS TRAVEL LINK.™

Displayed on a **6.5" LCD touch screen**, the available Navigation System features easy voice activation for everything from driving directions to accessing tunes. It also provides nearly **10 gigs of storage space** for photos and music (up to 2400 songs). Class-exclusive¹ SIRIUS Travel Link keeps you in the know with **up-to-the-minute** local traffic, weather, lowest fuel prices, sports scores and movie listings.² All at your fingertips.

SIRIUS® SATELLITE RADIO.

Standard SIRIUS Satellite Radio² includes a 6-month subscription to get you started. Surf **more than 130 channels** including **100% commercial-free** music, plus the best sports, news, talk and entertainment, coast-to-coast.

¹Sport Utility Truck class. ²Real-time traffic monitoring available in select markets. Some features are unavailable while driving. Subscription required after introductory 6 months expire. Service only available in the 48 contiguous United States and the District of Columbia.



You talk. SYNC listens.™

FORD SYNC® WITH 911 ASSIST.™³ PLUS NEW TRAFFIC, DIRECTIONS AND INFORMATION.

Our available **Ford SYNC** system, developed in association with Microsoft,[®] works with your paired **Bluetooth®-enabled mobile phone** and your **digital media player** or **USB drive** to make calls, play music and more – all with the touch of a button or a simple voice command.⁴ The latest version of SYNC also features these convenient **Driver Services**:

- 911 Assist
- Vehicle Health Reports
- Up-to-the-minute weather⁵
- Traffic alerts⁵
- Turn-by-turn directions⁵
- Business searches⁵
- Personalized business, sports, entertainment news and more⁵

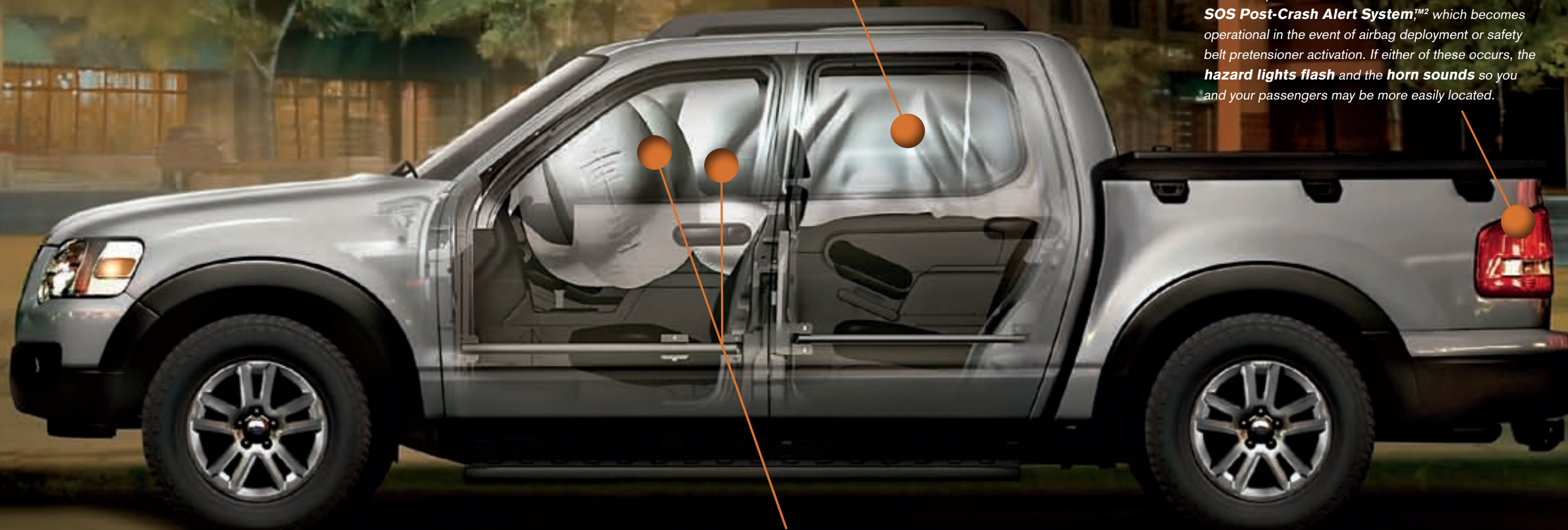
With **911 Assist**, the system can make an emergency call from your phone if any airbag has deployed. And, unlike other systems that send you to a call center first, SYNC connects you directly to a 911 operator. SyncMyRide.com has all the latest news.

SYNC
Powered by **Microsoft**

NOTE: See "Ford SYNC Footnotes" on Specs page for additional details and restrictions.

READY AND STABLE

It helps when your standards include **AdvanceTrac® with class-exclusive RSC®** (Roll Stability Control™),¹ the industry's only electronic stability control system with 2 gyroscopic sensors, including a unique vehicle-roll motion sensor. The sensor measures the roll rate 100 times every second and determines when and how to apply brakes and modify engine power to help keep all wheels firmly planted.



Our standard, patented **Safety Canopy® System** deploys side-curtain airbags to enhance protection for both rows of outboard-seated occupants in the event of certain side-impact collisions.

Additional peace of mind comes from the standard **SOS Post-Crash Alert System™**,² which becomes operational in the event of airbag deployment or safety belt pretensioner activation. If either of these occurs, the **hazard lights flash** and the **horn sounds** so you and your passengers may be more easily located.

Our class-exclusive **Intelligent Safety System™** (ISS) is also standard on every Sport Trac. The ISS enhances your protection in the event of certain frontal collisions by processing information from its suite of sophisticated sensors and adjusting the performance of the adaptive front airbags and adaptive load-limiting safety belt retractors. Front-seat side airbags are also standard.

¹Remember that even advanced technology cannot overcome the laws of physics. It's always possible to lose control of a vehicle due to inappropriate driver input for the conditions. For more information on AdvanceTrac with RSC, visit fordvehicles.com. ²SOS hardware may become damaged or the battery may lose power in a crash, which could prevent operation. Not all crashes will activate an airbag or safety belt pretensioner.



BUILT FOR ACTION

.....
Ford Sport Trac is your personal thrill ride. On city streets. Backcountry trails. And all points in between. Road or no road, Sport Trac is always at the ready. Take Sport Trac Limited. Its monochromatic exterior is accented by **18" chrome-clad aluminum wheels**, along with **chrome roof rails** and **step bar accents**. It's a look that will always find a home – wherever you choose to roam.
.....

Specs

DIMENSIONS & CAPACITIES

Exterior

Wheelbase	130.5"
Length	210.2"
Height (with options)	72.5"
Width – Excluding mirrors	73.7"
Width – Including mirrors	84.8"
Width – Mirrors folded	77.5"
Minimum running ground clearance	8.5"
Open tailgate to ground	30.9"
Overhang – Front	35.4"
Overhang – Rear	44.3"
Ramp breakover angle	17.2°
Angle of approach	28.7°
Angle of departure	17.2°

Interior

Front

Head room	39.8"
Shoulder room	59.0"
Hip room	55.4"
Leg room	42.4"

Rear

Head room	38.5"
Shoulder room	58.9"
Hip room	55.5"
Leg room	36.9"

Cargo Volume

Behind front seats	44.4 cu. ft.
Cargo box	37.5 cu. ft.

Maximum Loaded Trailer Weight¹

4.0L SOHC V6 Engine	
4x2 (Class II)	3500 lbs.
4x4/AWD (Class II)	3500 lbs.
4x2 (Class III/IV)	5250 lbs.
4x4/AWD (Class III/IV)	5080 lbs.

4.6L 3V V8 Engine

4x2 (Class II)	3500 lbs.
4x4/AWD (Class II)	3500 lbs.
4x2 (Class III/IV)	7160 lbs.
4x4/AWD (Class III/IV)	6990 lbs.

Dimensions may vary by trim level.

Cargo and load capacity limited by weight and weight distribution.

STANDARD

Mechanical

4.0L SOHC V6 engine with 5-speed automatic transmission
4-wheel Anti-lock Brake System (ABS)
Class II trailer tow hitch receiver
Independent front and rear suspensions
Non-limited-slip rear axle (3.73 ratio)
Trailer Sway Control

Safety & Security

Adaptive driver and front-passenger front airbags ²
Adaptive stroking steering column
AdvanceTrac [®] with RSC [®] (Roll Stability Control™)
Belt-Minder [®] front safety belt reminder
Front-Passenger Sensing System
Front-seat side airbags ²
LATCH – Lower anchors and tether anchors for child-safety seats (in rear-outboard seats)
Safety belts with pretensioners and adaptive load-limiting retractors (height-adjustable in front row)
Safety Canopy [®] System with side-curtain airbags ² and rollover sensor
SecuriLock [®] passive anti-theft ignition system
SOS Post-Crash Alert System™ ³ flashes hazard lights and sounds horn after airbag deployment or safety belt pretensioner activation in certain collisions
Tire Pressure Monitoring System (excludes spare)

Interior

Front bucket seats with 2-way adjustable head restraints
60/40 split-folding rear seat
Air conditioning (manual)
AM/FM stereo/single-CD player
Auxiliary audio input jack
Coat hooks (2)
Center floor console with armrest and covered storage
Front dome/map lights
Grab handles (1 for front passenger and 2 in rear)
Illuminated glove compartment
Large overhead console
Leather-wrapped steering wheel with cruise control and secondary audio controls
Power points (3)
Power windows with one-touch-down driver-window feature
SIRIUS Satellite Radio with 6-month subscription
Tilt steering column

Exterior

Cargo box power point
Cargo box tie-downs (10)
Chrome 3-bar grille with nostrils
Composite material cargo box with 3 gear bins
Fog lamps
Power sideview mirrors with security approach lamps
Power-sliding rear window



SPORT TRAC XLT

Equipped with all standard features, plus:

16" painted cast-aluminum wheels with P235/70R16 all-season OWL tires
Black bumpers and wheel-lip moldings
Black roof side rails
Black door handles and sideview mirror caps
Cloth-trimmed seating
Molded-rubber flooring
Heavy-duty berber floor mats
2-line message center with outside temperature display

Available Option Group

XLT Convenience Package: Auto-dimming rearview mirror, automatic headlamps, SecuriCode™ keyless-entry keypad, message center compass display, 6-way power driver seat, power-adjustable pedals and Reverse Sensing System + **XLT Appearance Package:** 17" painted cast-aluminum wheels, P245/65R17 all-season OWL tires and Black step bars + Ford SYNC[®] + Black roof-rack crossbars + hard, locking tonneau cover

Available Options & Packages

Cargo cage bed extender ⁴
Control Trac [®] 4-wheel-drive (4WD) system
Heavy-Duty Trailer Tow Package: Class IV hitch receiver, and 7-pin connector
Power moonroof with mini-overhead console ⁴

SPORT TRAC LIMITED

Equipped with all standard XLT features, plus:

18" chrome-clad aluminum wheels with P235/65R18 all-season OWL tires
Monochromatic exterior appearance
Automatic headlamps
Heated sideview mirrors with body-color caps
Chrome roof side rails and step bar accents
Hard, locking tonneau cover
SecuriCode keyless-entry keypad
Leather-trimmed seating with heated front bucket seats, 10-way power driver seat and 4-way manual passenger seat
Premium Sound System with 6-disc in-dash CD changer with subwoofer and 190 watts
Ford SYNC voice-activated, in-vehicle communications and entertainment system
Message center compass display
Auto-dimming rearview mirror

Available Option Groups

Limited Convenience Package: Dual-zone Electronic Automatic Temperature Control, 4-line message center, power-adjustable pedals and Reverse Sensing System⁵ + **Heavy-Duty Trailer Tow Package** + Black roof-rack crossbars

Limited Convenience Package + Heavy-Duty Trailer Tow Package + Adrenalin Package: see next column for contents

Available Options & Packages

4.6L 3-valve V8 engine with 6-speed automatic transmission and non-limited-slip rear axle (3.55 ratio)
Cargo cage bed extender ⁶
Control Trac 4-wheel-drive (4WD) system ⁷
Heavy-Duty Trailer Tow Package
Power moonroof with mini-overhead console ⁶
Voice-activated Navigation System with nearly 10-gigabyte hard drive, single-disc Premium Sound System, and SIRIUS Travel Link™ services with 6-month subscription ⁶

ADRENALIN PACKAGE

Equipped with select standard Limited features, plus:

20" polished-aluminum wheels with P255/50R20 all-season BSW tires
Black grille
Unique front and rear fascias
Unique fender vents
Unique headlamps and fog lamps
Unique running boards
Single rear-exit exhaust with dual chrome tip
Adrenalin tailgate badge
Charcoal Black instrument panel, seats, door-trim inserts and center console lid
Camel headliner
Charcoal Black leather-trimmed heated front bucket seats with perforated-leather inserts
Adrenalin-branded floor mats
<i>(Wheel-lip moldings and roof side rails are deleted; Adrenalin Package is available in 4x2 or AWD)</i>

HORSEPOWER, TORQUE & EPA-ESTIMATED FUEL ECONOMY⁸

4.0L SOHC V6 Engine		
Horsepower	210 @ 5100 rpm	
Torque (lb.-ft.)	254 @ 3700 rpm	
5-speed automatic		
4x2	14 mpg city/20 hwy.	
4x4	13 mpg city/19 hwy.	
4.6L 3V V8 Engine		
Horsepower	292 @ 5700 rpm	
Torque (lb.-ft.)	315 @ 4000 rpm	
6-speed automatic		
4x2	15 mpg city/21 hwy.	
4x4	14 mpg city/19 hwy.	



Available Power Moonroof



Independent Rear Suspension



Available 7160-lb. Towing Capacity



Cargo Box Gear Bins

New Vehicle Limited Warranty. We want your Ford Sport Trac ownership experience to be the best it can be. So under this warranty, your new vehicle comes with 3-year/36,000-mile Bumper-to-Bumper Coverage, 5-year/60,000-mile Powertrain Warranty Coverage, 5-year/50,000-mile Safety Restraint Coverage, and 5-year/unlimited-mile Corrosion (Perforation) Coverage – all with no deductible. Please ask your Ford Dealer for a copy of this limited warranty.

Roadside Assistance. Covers your vehicle for 5 years or 60,000 miles, so you have the security of knowing that help may be only a phone call away should you run out of fuel, lock yourself out of the vehicle, or need towing. Your Ford Dealer can provide complete details on all of these advantages.

Ford Credit. Get the ride you want. Whether you plan to lease or finance, you'll find the choices that are right for you at Ford Credit. Ask your Ford Dealer for details or check us out at fordcredit.com.

Ford Extended Service Plan. For a purchase or lease, the Ford Extended Service Plan (ESP) gives you "Peace-of-Mind" protection designed to cover key vehicle components and protect you from the cost of unexpected repairs. Ask your dealer for a Ford ESP, the only service contract backed exclusively by Ford and honored at all Ford Lincoln Mercury dealerships.

Insurance Services. Get Ford Motor Company quality in your auto insurance. Our program offers industry-leading benefits and competitive rates. Call 1-877-367-3847, or visit us at fordvip.com for a no-obligation quote. Insurance offered by American Road Services Company (in CA, American Road Insurance Agency), a licensed agency and subsidiary of Ford Motor Company.

Comparisons based on 2009 competitive models (Sport Utility Truck class), publicly available information and Ford certification data at time of printing. Some features discussed may be optional. Vehicles shown may contain optional equipment. Features shown may be offered only in combination with other options or subject to additional ordering requirements or limitations. Dimensions shown may vary due to optional features and/or production variability. Following publication of the catalog, certain changes in standard equipment, options and the like, or product delays may have occurred which would not be included in these pages. Your Ford Dealer is the best source for up-to-date information. Ford Division reserves the right to change product specifications at any time without incurring obligations.

¹Maximum weights shown are for properly equipped vehicles with required equipment and a 150-lb. driver. Weight of additional options, equipment, passengers and cargo must be deducted from this weight. For additional information, see your Ford Dealer. ²Always wear your safety belt and secure children in the rear seat. ³SOS hardware may become damaged or the battery may lose power in a crash, which could prevent operation. Not all crashes will activate an airbag or safety belt pretensioner. ⁴Requires XLT Convenience Package. ⁵Reverse Sensing System not available with Adrenalin Package. ⁶Requires Limited Convenience Package. ⁷Not available with Adrenalin Package. ⁸Based on 2009 model-year ratings.

FORD SYNC FOOTNOTES

³The vehicle's electrical system (including the battery), the wireless service provider's signal, and a connected mobile phone must all be available and operating for 911 Assist to function properly. These systems may become damaged in a crash. The paired mobile phone must be turned on, connected to SYNC, and the 911 Assist feature enabled in order for 911 to be dialed. ⁴Driving while distracted can result in loss of vehicle control. Only use mobile phones and other devices, even with voice commands, when it is safe to do so. ⁵SYNC with Traffic, Directions and Information available Summer 2009. These SYNC services not available with SIRIUS Travel Link or Navigation System. See your dealer for details.

SIRIUS is a registered trademark of SIRIUS XM Radio Inc. Subscriptions governed by SIRIUS Terms and Conditions at sirius.com/serviceterms.

Microsoft is a registered trademark of Microsoft Corporation.

The Bluetooth word mark is a trademark of the Bluetooth SIG, Inc.

Colors & Wheels



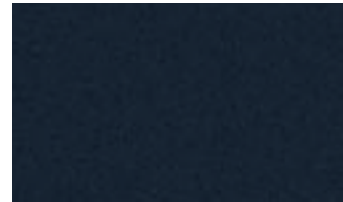
Sangria Red Metallic



Blue Flame Metallic



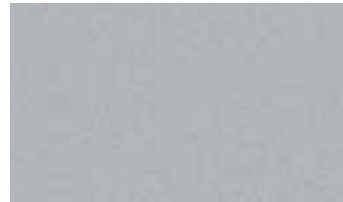
Dark Copper Metallic



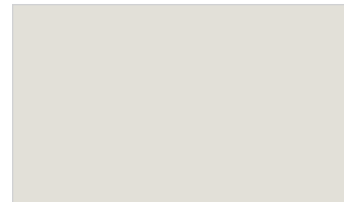
Black Pearl Slate Metallic



Black



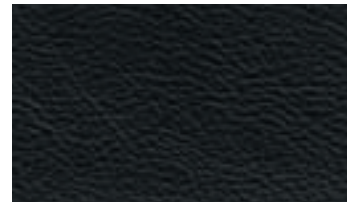
Brilliant Silver Metallic



White Suede



Torch Red



Leather - Charcoal Black
Standard on Limited



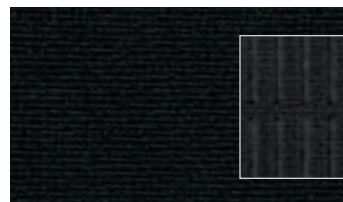
Leather - Charcoal Black with perforated inserts
Standard on Limited with Adrenalin Package



Leather - Camel with Sand inserts
Standard on Limited



Cloth - Camel with Sand inserts
Standard on XLT



Cloth - Charcoal Black
Standard on XLT

Colors shown are representative only. Not all colors are available on all models. See your dealer for actual paint/trim options.

	Interior Colors	
XLT		
Sangria Red Metallic	●	●
Blue Flame Metallic	●	●
Dark Copper Metallic	●	●
Black Pearl Slate Metallic	●	●
Black	●	●
Brilliant Silver Metallic	●	●
White Suede	●	●
Limited		
Sangria Red Metallic	●	●
Blue Flame Metallic	●	●
Dark Copper Metallic	●	●
Black Pearl Slate Metallic	●	●
Black	●	●
Brilliant Silver Metallic	●	●
White Suede	●	●
Limited with Adrenalin Package		
Blue Flame Metallic	●	●
Black	●	●
Brilliant Silver Metallic	●	●
Torch Red	●	●
INTERIORS: ● Camel ● Charcoal Black		



16" Painted Cast-Aluminum
Standard on XLT



17" Painted Cast-Aluminum
Included in XLT Appearance Package



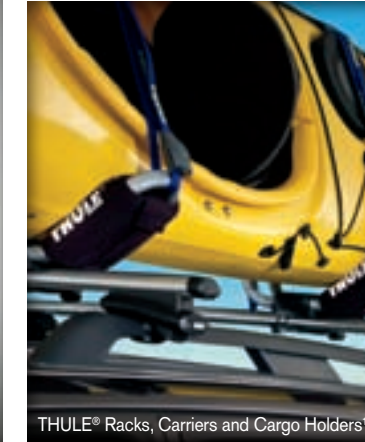
18" Chrome-Clad Aluminum
Standard on Limited



20" Polished-Aluminum
Included in Adrenalin Package



Interior Soft Cargo Organizers (Large and Standard Size) and Interior Soft Cargo Cooler Bag



THULE® Racks, Carriers and Cargo Holders¹



Remote Start Systems



Side Window Deflectors



All-Weather Floor Mats



Dual INVISION™ DVD Headrests¹



Trailer Hitch Balls/Draw Bars



Garmin® Portable Navigation Systems¹



Splash Guards

Accessories

- Also available:**
- Katzkin® Leather Seat Covers¹
 - Electrochromic Mirrors
 - SmartAlert™ GPS Tracking and Recovery¹
 - Keyless Entry Keypads
 - Vehicle Security System
 - Hood Deflectors
 - Interior Hard Trunk Cargo Organizers
 - Hard Folding Tonneau Cover
 - Soft Tri-Fold Tonneau Cover
 - Soft Roll-Up Tonneau Cover
 - EchoMaster® HitchScan™ Rear Park Assist Sensor and Hitch Step¹
 - Step Bars
 - Bed Extender
 - Bed Mat
 - Wheel Locks
 - Electric Safety Tow
 - Wiper Shaker De-Icer and Debris Cleaner¹
 - Ashcup/Coin Holder/Smoker's Pack

¹Ford Licensed Accessories. Garmin is a registered trademark of Garmin Ltd.

To learn more about Ford Custom Accessories and to buy them online, visit fordaccessories.com.

Genuine Ford Accessories will be warranted for whichever provides you the greatest benefit: 12 months or 12,000 miles (whichever occurs first), or the remainder of your Bumper-to-Bumper 3-year/36,000-mile New Vehicle Limited Warranty. Contact your local Ford Dealer for details and a copy of the limited warranty. Ford Licensed Accessories (FLA) are warranted by the accessory manufacturer's warranty. Contact your Ford Dealer for details regarding the manufacturer's limited warranty and/or a copy of the FLA product limited warranty offered by the accessory manufacturer.

