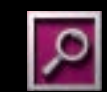
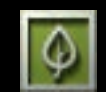


THE FACTS ABOUT FORD.



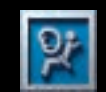
Quality Trucks.

FACT: Ford has more trucks on the road with over 250,000 miles than any other brand.¹ And Ford F-Series has been America's best-selling line of trucks for 32 years in a row.



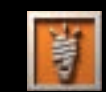
Green Trucks.

FACT: Ford vans and pickups achieve best-in-class or unsurpassed fuel economy in 3 different classes.² And Power Stroke® diesels meet stringent federal emissions standards with Ford Clean Diesel Technology.TM



Safe Trucks.

FACT: We're working to help keep you and yours safe. AdvanceTrac® with RSC^{®3} is now available on more Ford Truck models than ever. And F-150's extensive safety features help make it America's Safest Full-Size Pickup.⁴



Smart Trucks.

FACT: From exclusive box-side and tailgate steps to Ford Work Solutions™ to Ford SYNC,[®] no other brand of trucks offers more innovative technology and productivity tools to help you get the job done.

Visit fordvehicles.com to learn more.



Printed in USA. Please recycle.

¹Based on vehicle registration data and latest odometer readings available to R. L. Polk & Co. for 1992 and newer model year full-size pickups and vans still on the road in the U.S. as of April 2008. ²Based on F-150 2009 EPA-estimated 15 mpg city/21 hwy., 4x2 with 4.6L 3-valve V8 engine. Class is non-hybrid Full-Size Pickups under 8500 lbs. GVWR; Ranger 2009 EPA-estimated 21 mpg city/26 hwy., 4x2 with 2.3L engine and 5-speed manual transmission; and Transit Connect Small Van 2010 EPA-estimated 22 mpg city/25 hwy. ³Remember that even advanced technology cannot overcome the laws of physics. It's always possible to lose control of a vehicle due to inappropriate driver input for the conditions. For more information on AdvanceTrac with RSC, visit fordvehicles.com. ⁴Based on both NHTSA 5-Star crash test ratings and IIHS Top Safety Pick. Star ratings are part of the U.S. Department of Transportation's Safercar.gov program (www.safercar.gov).





Natural **BORN LEADER**

Muscular sheet metal wrapped around an incredibly strong structure alerts you to the **huge capabilities** on tap. **Best-in-class¹ towing and payload**, and the might of an available **6.4L Power Stroke[®] V8 Turbo Diesel** are just 2 of its many strengths. The cab offers **comfort that's unique** in the world of heavy-duty pickups. And no other truck in the class offers so many innovations to make work easier. Super Duty is part of **America's best-selling line of trucks for 32 years running: Ford F-Series.**

1

THE MOST CAPABLE PICKUP IN NORTH AMERICA¹

- BEST-IN-CLASS 5th-Wheel Towing
- BEST-IN-CLASS Conventional Towing
- BEST-IN-CLASS Payload
- BEST-IN-CLASS Gas Torque 6.8L 3-Valve V10 Engine
- EXCLUSIVE PowerScope™ Power-Telescoping/-Folding Trailer Tow Mirrors
- EXCLUSIVE Tailgate Step
- EXCLUSIVE Stowable Bed Extender
- EXCLUSIVE Rapid-Heat Supplemental Cab Heater
- EXCLUSIVE Quiet Steel® Dash Panel
- EXCLUSIVE Standard Box-Rail Moldings
- EXCLUSIVE ToughBed® Factory-Installed Spray-In Bedliner (available Fall 2009)
- EXCLUSIVE Standard Built Ford Tough® Hitch Receivers — All Models
- EXCLUSIVE Upfitter Switches
- EXCLUSIVE F-450 Pickup

TOWS UP TO 24,600 LBS.²

¹Best-in-class payload and towing, GVWR and GCWR when properly equipped. Class is Full-size Pickups over 8500 lbs. GVWR. Based on comparison of 2009 competitive models.

²Maximum capability when properly equipped. See your Ford Dealer for specific equipment and other limitations. Vehicles throughout this catalog may be shown with optional and aftermarket upfit equipment.

F-350 LARIAT Crew Cab DRW 4x2 in Black/Ingot Silver Two-Tone with available equipment

SUPER DUTY® PICKUP

Tow in CONTROL

with Ford Technology

The first fully **integrated Trailer Brake Controller (TBC)**¹ in the class **1** works in conjunction with the **Anti-lock Brake System (ABS)** **2** to balance the truck's braking power with electrically actuated trailer brakes. The **TorqShift® automatic transmission** **3** includes Tow/Haul Mode to match transmission operation to the demands of towing and hauling. **Telescoping trailer tow mirrors** **4** help give you a clear rear view for towing a king-size trailer. Developed and refined, these advanced factory-installed towing systems help you **tow with confidence**.

TRAILER BRAKE CONTROLLER

This optional device uses braking input, vehicle speed and ABS logic to balance the performance of the truck brakes and electric trailer brakes. A user-friendly display in the instrument cluster message center indicates output, gain levels and trailer connection status. The system also has a disconnect alarm with message center warnings.

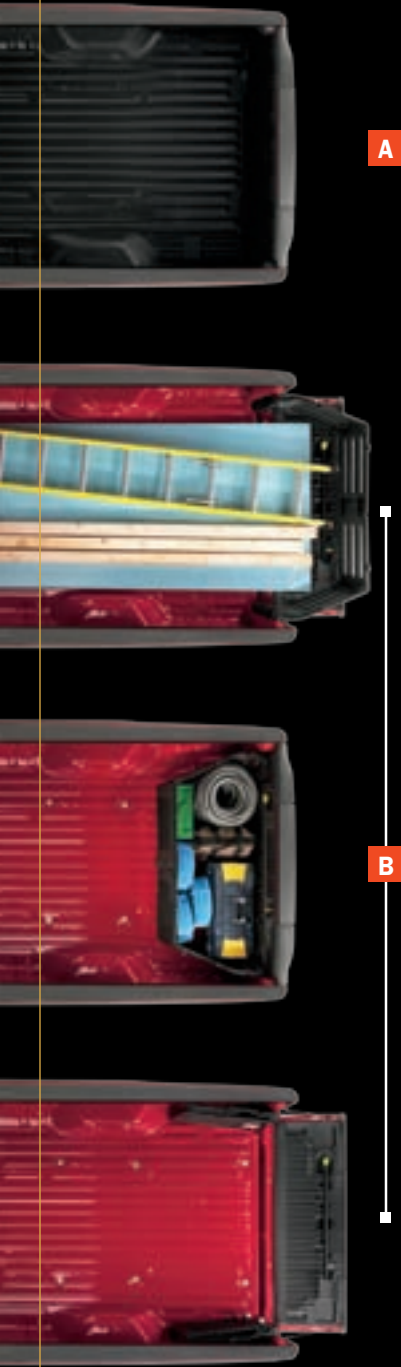


REAR VIEW CAMERA

This option takes the full-color image from a camera mounted in the tailgate and displays it in your auto-dimming rearview mirror or on the available Navigation System's 6.5" screen (shown). Just shift into reverse for a wide-angle view behind the truck. The video display's built-in distance guide is ideal for trailer hookups.



¹TBC verified to be compatible with electrically actuated drum brakes only.



A

B

C



F-450 4x2
6180
LBS.

*PROPERLY EQUIPPED.

BEST-IN-CLASS
MAXIMUM
PAYLOAD

WORK made easier

When a truck can haul **best-in-class payload**,¹ it only makes sense that it can help you **load, access and manage** that payload as well. And **no competitor does it better.**

A. CLASS-EXCLUSIVE TOUGHBED® SPRAY-IN BEDLINER
This factory-installed synthetic lining is applied directly to the bed surface for durable, long-lasting protection. Available Fall 2009.

B. CLASS-EXCLUSIVE STOWABLE BED EXTENDER
This rugged, optional barrier lets you haul with the tailgate down or secure smaller loads with the tailgate up. It folds conveniently out of the way when not in use.

C. CLASS-EXCLUSIVE TAILGATE STEP
A handy option that stows in the tailgate. Just take hold of the flip-up grab bar, flip down the skid-resistant step, and climb up into the box.

BUILT FORD TOUGH® HITCH RECEIVERS
Every Super Duty pickup comes with a hitch receiver matched to the truck's capabilities. 7-pin and 4-pin electrical connection outlets are included; draw bars and accessories are sold separately.



F-450 KING RANCH® Crew Cab 4x4 in Forest Green/Pueblo Gold Two-Tone with available equipment

SUPER DUTY® PICKUP

SMART amenities

A. FLAT STEEL LOADFLOOR

XLT Crew Cabs and above feature a standard FlexFold rear seat with a steel loadfloor. A multitude of configurations set the stage for practicality and versatility.

B. DUAL-ZONE ELECTRONIC AUTOMATIC TEMPERATURE CONTROL

Front-seat passengers can set their own personal comfort level with Dual-zone Electronic Automatic Temperature Control.

C. AUXILIARY AUDIO INPUT JACK

All Super Duty CD audio systems feature an auxiliary audio input for any compatible MP3 player (shown with available Ford SYNC®).

D. CENTER CONSOLE

Optional bucket seats include a deep center console that can easily hold a laptop or store files from integrated hanging racks.

RAPID-HEAT SUPPLEMENTAL CAB HEATER

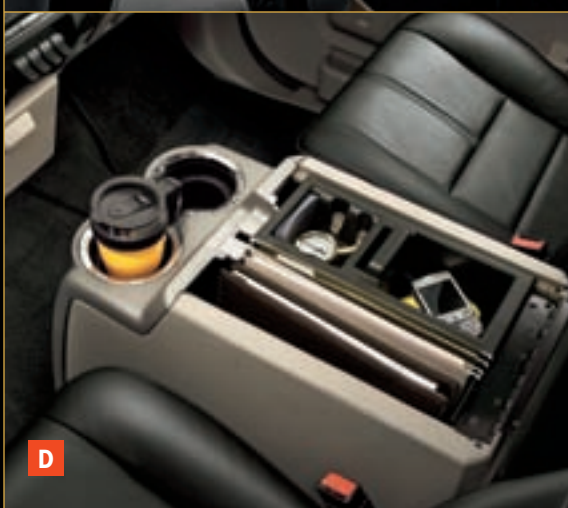
An electric heating system that automatically helps raise cabin temperature to a comfortable level. It's optional on diesel engine trucks equipped with air conditioning and alternator upgrade.

POWER-SLIDING MOONROOF

An available tinted-glass panel slides open or tilts forward to let in just the right amount of air and sun. Includes an integrated sunshade.

MEMORY POWER-ADJUSTABLE PEDALS

Available on select packages, these pedals memorize positions for 2 different drivers.



F-250

Maximum capabilities:

5th-Wheel Towing: 16,500 lbs.
Conventional Towing: 12,500 lbs.
Payload: 3220 lbs.
GCWR: 23,000 lbs. • GVWR: 10,000 lbs.
Front GAWR: 5250 lbs. (4x2); 6000 lbs. (4x4)

Equipment configurations:

Engines: 5.4L Gas V8, 6.8L Gas V10,
6.4L Power Stroke® V8
Drivelines: 4x2 or 4x4 • Single Rear Wheel Only
Bodies: Regular Cab, SuperCab,
Crew Cab • 6¾' Box, 8' Box
Trim Series: XL, XLT, Cabela's®, LARIAT
Appearance Packages:
XL Décor, Chrome, KING RANCH®,
Ford Harley-Davidson™

F-350

Maximum capabilities:

5th-Wheel Towing: 18,800 lbs.
Conventional Towing: 15,000 lbs.
Payload: 5730 lbs.
GCWR: 26,000 lbs. • GVWR: 13,000 lbs.
Front GAWR: 5250 lbs. (4x2); 6000 lbs. (4x4)

Equipment configurations:

Engines: 5.4L Gas V8, 6.8L Gas V10, 6.4L Power Stroke V8
Drivelines: 4x2 or 4x4 • Single Rear Wheel or Dual Rear Wheel
Bodies: Regular Cab, SuperCab, Crew Cab • 6¾' Box, 8' Box
Trim Series: XL, XLT, Cabela's, LARIAT
Appearance Packages: XL Décor, Chrome, KING RANCH, Ford Harley-Davidson™

F-450

Maximum capabilities:

Record 5th-Wheel Towing: 24,600 lbs.
Record Conventional Towing: 16,000 lbs.
Record Payload: 6180 lbs. • Record GCWR: 33,000 lbs.
Record GVWR: 14,500 lbs. • Record Front GAWR: 6500 lbs.

Equipment configurations:

Engine: 6.4L Power Stroke V8 Only
Drivelines: 4x2 or 4x4 • Dual Rear Wheel Only
Body: Crew Cab 8' Box Only
Trim Series: XL, XLT, LARIAT
Appearance Packages: XL Décor, Chrome,
KING RANCH, Ford Harley-Davidson™

MAXIMUM CHOICE & CAPABILITY

NOTE: Ratings shown are maximum available for the model when properly equipped. Specific capabilities vary by final vehicle configuration. See your Ford Dealer for ordering details.



F-350 XLT Crew Cab SRW 4x4 in Dark Blue Pearl with Chrome Package and other available equipment



Ford F-Series Cabela's F-350 Crew Cab in Forest Green/Sterling Grey Two-Tone with available equipment



11

MAXIMUM VERSATILITY: Available with every cab, engine and driveline

SUPER DUTY XLT

Includes XL standard features, plus: Integrated Trailer Brake Controller • Manual trailer tow mirrors with power heated glass • Chrome grille with Medium Platinum insert • Cast-aluminum, painted steel or forged polished-aluminum wheels • Chrome bumpers • AM/FM stereo/single-CD player with MP3 capability • Power windows • Cruise control • Cloth seats • 40/20/40 split front seat • Fold-up rear bench (SuperCab) • FlexFold® 60/40 split rear seat (Crew Cab) • Remote keyless entry • Perimeter alarm • And more

XLT Crew Cab with Cloth Seats, Center Console and available equipment



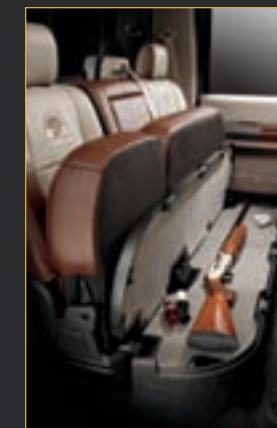
BUILT FORD TOUGH® for the great outdoors

CABELA'S®

Includes XLT standard features, plus: Unique two-tone exterior paint • Accent-color wheel-lip moldings • Cloth seats • Front seats with center console and stitched Cabela's logo on the seatbacks • 60/40 split fold-up rear seat with lockable underseat stowage¹ • SIRIUS® Satellite Radio² with complimentary 6-month subscription • 6" painted angular step bars • Unique hub caps • Bed mat/tailgate badge with Cabela's logo • Optional heated leather-trimmed front seats • And much more

¹Obey all federal, state and local regulations when transporting firearms.
²Service only available in the 48 contiguous United States and the District of Columbia.

Underseat Storage



Optional Cabela's Luxury Leather-Trimmed Interior



SUPER DUTY® PICKUP



A VERY rewarding experience

LARIAT

Includes XLT standard features, plus: Premium forged-aluminum or forged polished-aluminum wheels • PowerScope Trailer Tow Mirrors • Ford SYNC® voice-activated communications and entertainment system¹ • Premium leather-trimmed power, heated front seats with center console • Premium vinyl fold-up rear bench (SuperCab) or premium leather-trimmed FlexFold® 60/40 split rear bench (Crew Cab) • Dual-zone Electronic Automatic Temperature Control • Leather-wrapped steering wheel with secondary audio controls • Power-sliding rear window with privacy glass • And much more

13

| LARIAT Crew Cab with Ebony Leather-Trimmed Front Seats and available equipment |



¹Driving while distracted can result in loss of vehicle control. Only use mobile phones and other devices, even with voice commands, when it is safe to do so.

| F-350 LARIAT Crew Cab DRW 4x4 in Black with PowerScope™ Mirrors and available equipment |

SUPER DUTY® PICKUP



F-450 KING RANCH® Crew Cab 4x4 in Forest Green/Pueblo Gold Two-Tone with available equipment

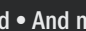


KING RANCH Instrument Panel with available equipment



The SPIRIT of the West

KING RANCH

Includes LARIAT standard features, plus: KING RANCH-branded, Chaparral leather-trimmed seats • Power front seats with center console and FlexFold® 60/40 split rear seat • Memory power-adjustable pedals • Premium Sound System AM/FM stereo/6-disc in-dash CD/MP3 and 8 speakers with subwoofer • Rear View Camera • Universal Garage Door Opener • Chrome grille with Pueblo Gold insert • Unique wheels • Two-tone paint with Pueblo Gold lower accent • Pueblo Gold illuminated cab steps, box-rail/tailgate top moldings and bumpers • Body-color mirror caps • KING RANCH badges with “Running ” brand • And much more



Ford Harley-Davidson™ F-450 Crew Cab DRW 4x4 in Black with Optional Tuxedo Black Flames and available equipment



Unique Interior with Black Leather Trim



Detroit IRON and Milwaukee SOUL

FORD HARLEY-DAVIDSON™

F-SERIES SUPER DUTY

Includes LARIAT standard features, plus: Black Monotone with high-line tape stripes, or optional Black with Tuxedo Black Flames and dimensional chrome boxside lettering • Billet-style grille insert • Illuminated Black molded running boards with stainless steel inserts • Polished/painted forged-aluminum wheels • Unique Black leather-trimmed front seats and center console with chrome Bar & Shield logo badges • FlexFold 60/40 split rear bench with chrome Bar & Shield logo badges • Premium Sound System AM/FM stereo/6-disc in-dash CD/MP3 and 8 speakers with subwoofer • Unique memory power-adjustable performance pedals • Rear View Camera • Universal Garage Door Opener • And much more (diesel engine only)



NO other TRUCK COMPARES¹

Super Duty[®] rewrites the rules for **capability and comfort** with top-quality materials and refinement. And it's available with **technologies and upgrades** to help you through your day.

YOU TALK. SYNC LISTENS.[™] FORD SYNC[®] GETS NEW 911 ASSIST[™] PLUS TRAFFIC, DIRECTIONS AND INFORMATION

Available Ford SYNC, developed in conjunction with Microsoft,[®] works with your paired Bluetooth[®]-enabled mobile phone and digital media player or thumb drive to make calls, play music and more — all with the touch of a button and simple voice commands.² With 911 Assist, the system can make an emergency call from your phone if any airbag has deployed.³ And now, SYNC features these convenient Driver Services:

- Turn-by-turn directions⁴ • Vehicle Health Reports
- Up-to-the-minute weather⁴ • Traffic alerts⁴ • Business searches⁴
- Personalized business, sports and entertainment news⁴

For all the latest details, visit SyncMyRide.com.



SIRIUS[®] SATELLITE RADIO

Available SIRIUS Satellite Radio⁵ comes with a 6-month trial subscription to get you started surfing over 130 channels of sports, news, entertainment and 100% commercial-free music, coast-to-coast.



NAVIGATION WITH SIRIUS TRAVEL LINK[™]

Easy voice activation for everything from driving directions to accessing tunes. Displayed on a bright 6.5" LCD touch screen, the available Navigation System also provides nearly 10 gigabytes of storage space for your photos and music (up to 2400 songs). Class-exclusive SIRIUS Travel Link⁵ comes with a 6-month trial subscription to keep you in the know with up-to-the-minute local traffic, weather, fuel prices, sports scores and movie listings and showtimes. All at your fingertips.



¹Unless it's a Ford.

²Driving while distracted can result in loss of vehicle control. Only use mobile phones and other devices, even with voice commands, when it is safe to do so.

NOTE: See page 35 for additional details and restrictions.



Work even SMARTER

SMART TOOLS FOR TOUGH TRUCKS

Only the **toughest name in trucks** could assemble this all-star lineup. From **communications and computing** to **navigation, fleet tracking** and **security**, every position is filled by a pro.

A. MOBILE-OFFICE COMPUTING POWER

The available Internet-capable in-dash computer, featuring a Windows® CE operating system, is the heart of Ford Work Solutions.¹ Use the wireless keyboard to create spreadsheets and other documents, download files from the web via the Sprint® Mobile Broadband Network² — even print them when you add the available wireless printer. Full-function hands-free calling and turn-by-turn navigation from Garmin® is also included. Your office has truly gone mobile.³

B. CABLE LOCK

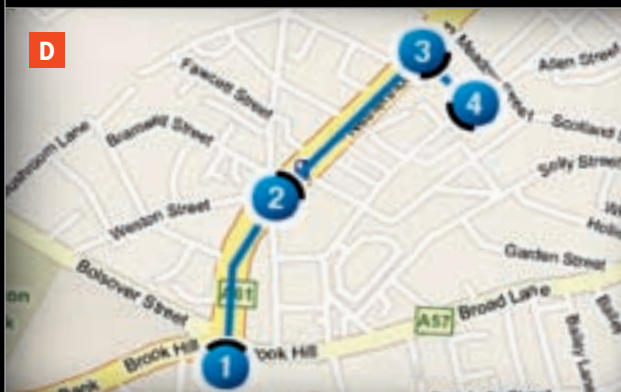
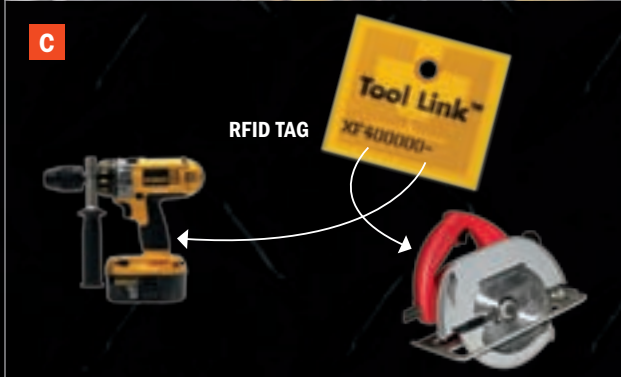
It's a sure way to wreck a thief's day. This rugged, retractable, 10-ft. vinyl-coated, braided-steel cable spools out of a case mounted right in your cargo box. Snake it through tool handles and equipment frames to secure them in the box. Clip the heavy-duty locking shackle to any cargo box tie-down or back onto the cable itself. With the optional Ford Work Solutions Cable Lock by Master Lock®, your gear is secured, yet easy to access.

C. TOOL LINK™

Ford Work Solutions Tool Link,⁴ developed with DeWALT®, uses Radio Frequency Identification (RFID) technology to track your tools. Use it to check the truck before you leave for a job, making sure you have what you need, then check again at the end of the workday to see that all your gear is on board. It can save you time and frustration — the perfect workmate.

D. CREW CHIEF™

Put available Crew Chief telematics devices on your fleet trucks, and you can track 'em, 24/7. Just pull up the website using the Ford Work Solutions in-dash computer in your truck, or any computer with web access. Crew Chief, offered by Microlise™, shows which truck is closest to the job you need done. It can also provide information that's vital to the life of your trucks and your profits. Easy-to-use analysis tools⁵ can help you keep your fleet in shape, fuel efficient and green.



¹Ford Work Solutions include Ford Licensed Accessories. See dealer for limited warranty details. ²Sprint subscription and 1-year agreement required. ³Driving while distracted can result in loss of vehicle control. Only use mobile phones and other devices, even with voice commands, when it is safe to do so. To avoid driving distractions, some functions are disabled while the truck is in motion. ⁴Tool Link RFID system will not read tagged tools in metal tool boxes. ⁵Service fee required.

A. BUILT FORD TOUGH® HITCH RECEIVER

Rated to the truck's capabilities, it's standard on every Super Duty® pickup.

B. RUGGED CROSSMEMBERS

Crossmembers are riveted, welded or both to optimize frame capability.

C. LONG REAR SPRINGS

Over 66" in length, they help manage torque without compromising comfort.

D. STAGGERED REAR SHOCKS

They help control axle motions for a smooth ride and confident handling — loaded or unloaded.

E. REAR SUSPENSION

The Hotchkiss design allows model-specific spring and axle ratings for a wide range of capacities. Max. GVWRs range from 8800 lbs. to 14,500 lbs. Max. GCWRs range from 15,000 lbs. all the way up to 33,000 lbs.

F. THICK C-CHANNEL FRAME

Steel C-channel up to 6.7-mm thick is one reason Super Duty delivers best-in-class payload and towing. Electrocoating promotes corrosion resistance.

G. MICRO-CELLULAR URETHANE BODY MOUNTS

These compress proportionally to the load for controlled body motions and a comfortable ride.

H. BODY-TO-FRAME MOUNTING BOLTS

Driven from the bottom up, this is a feature many aftermarket builders find desirable.

I. ENGINE TRACTION CONTROL

This optional driver-selectable function can automatically step in to reduce power when it detects a loss of traction.



RELY on PROVEN STRENGTH

Only a foundation engineered and built like this can deliver **true Super Duty capability**. And it's a key component in legendary Ford durability, keeping **more trucks on the road with over 250,000 miles than any other brand**.¹ It's also tuned to deliver the **quiet ride, stable handling**, and road-going performance that's unique to Ford trucks.

J. BEST TURNING DIAMETER

F-450 Wide-Track 4x4 Pickup boasts the best Crew Cab Long Box turning diameter of any truck in its class.

K. OUTSTANDING BRAKING POWER

The standard 4-wheel Anti-lock Brake System (ABS) has huge vented rotors and dual-piston calipers to provide strong, consistent stops, even when moving the biggest loads.

L. LARGEST FRONT CONTROL ARMS

These support best-in-class maximum front GAWRs of 6500 lbs. on F-450 4x4, and 6000 lbs. on F-450 4x2.

HIGHEST GVWRs

A properly equipped F-450 DRW 4x2 can take on payload, passengers, fuel and cargo up to a best-in-class 6180 lbs. A properly equipped F-350 DRW 4x2 outperforms its direct competitors with a maximum load of up to 5730 lbs.

¹Based on vehicle registration data and latest odometer readings available to R. L. Polk & Co. for 1992 and newer model year full-size pickups and vans still on the road in the U.S. as of April 2008.

Choose your **POWER**

6.4L 32-VALVE POWER STROKE® V8 TURBO DIESEL

For **serious diesel power**, sign up here. High-pressure common-rail fuel injection helps deliver 100% of its **650 lb.-ft. of torque¹** at just 2000 rpm, and optimizes cold-start capability. This is also the **quietest Ford truck diesel** yet. Ford Clean Diesel Technology™ helps reduce particulate emissions to meet stringent federal standards.

POWER STROKE HIGHLIGHTS

- 350 hp @ 3000 rpm¹
- 650 lb.-ft. of Torque @ 2000 rpm¹
- Dual Sequential Turbocharger
- Engine Calibrated for Optimal Operating Efficiency
- High-Pressure Common-Rail Fuel Injection
- Micro-Precision Piezo-Electric Injectors
- Quick Cold Start Down to -20°F
- Powder-Forged Connecting Rods
- High-Capacity Oil Pump
- Heavy-Duty Alternators

¹Governed at 325 hp @ 3000 rpm and 600 lb.-ft. of torque @ 2000 rpm on F-450/F-550.

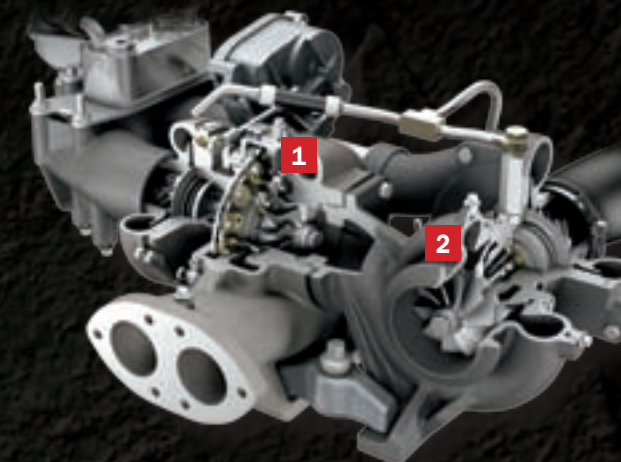
TORQSHIFT® TRANSMISSION

This proven 5-speed automatic has a massive torque converter and beefy gear sets. Its selectable Tow/Haul Mode adjusts to match towing and hauling demand. That reduces gear hunting, improves power delivery, and engages engine braking to help control vehicle speed when descending hills.



CLASS-EXCLUSIVE GAS POWER CHOICES

Only Super Duty® offers you different gas power solutions to suit your needs — including a 5.4L V8 or the only optional 6.8L V10 gas powerplant in the class (above). Manual or automatic transmissions are available on select models.



POWER STROKE'S DUAL SEQUENTIAL TURBOS

This advanced turbocharging system delivers the power to flatten any mountain pass. The high-pressure Electronic Variable Response Turbo (EVRT®) **1** spools up first to provide fast transient engine response. The larger low-pressure turbo **2** provides added airflow at peak power and torque. With excellent transient response, outstanding low-speed torque and rugged durability, you can expect seamless performance from one end of the tachometer to the other.

Put any job ON ITS BACK: CHASSIS CAB

F-Series Super Duty Chassis Cabs are **always prepared** to take on the **toughest jobs**. As you'd expect, they boast **massive capacities** and **exceptional maneuverability**, along with the cleanest and quietest Ford truck diesel — the **6.4L Power Stroke® V8 Turbo Diesel**. Choose this optional top-of-the-line powerplant to get **maximum capability** from your Super Duty.



F-550 XLT Crew Cab 4x4 in Vermillion Red with Aftermarket Dump Body Upfit and available equipment



F-550 LARIAT Crew Cab 4x4 in Pueblo Gold with Aftermarket Service Body Upfit and available equipment

AT YOUR SERVICE

When you choose Super Duty Chassis Cab, you're getting much more than a truck. Ford's Commercial Truck services are with you every step of the way, and Ford Certified Truck Dealers are there to keep you rolling.



Our Business Preferred Network is made up of top Ford Dealers who offer a range of services designed for business.

25



An Extended Service Plan can help protect you from unexpected repair costs.



Ford Credit offers financing to help make your vision a reality.

Find out more at commtruck.ford.com.

A. TRAILER BRAKE CONTROLLER (TBC)¹

Integrated with the truck's Anti-lock Brake System, a user-friendly interface makes this optional controller easy to operate. (See page 2 for details.)

B. UPFITTER SWITCHES

These standard switches can operate high-power relays for heavy-duty accessories. Integrated with the instrument panel, their handsome design fits your truck.

C. FRONT STEP BUMPER

Maintenance is a cinch with this standard feature. The deep step gives you a stable platform.

D. TWIN-COIL MONOBEAM FRONT SUSPENSION

Standard on F-350 4x4 and all F-450/F-550 Super Duty models, this rugged design eliminates interleaf friction and helps reduce axle windup.

E. 4-WHEEL DISC ANTI-LOCK BRAKES

Every Super Duty Chassis Cab features ABS as standard equipment. Massive vented discs cool quickly to provide sure stopping power.

F. CHOOSE YOUR RATINGS

Get the right heavy-duty axles, springs, shocks, and standard front and rear stabilizer bars for the job.

G. POWER TAKEOFF (PTO) PROVISION

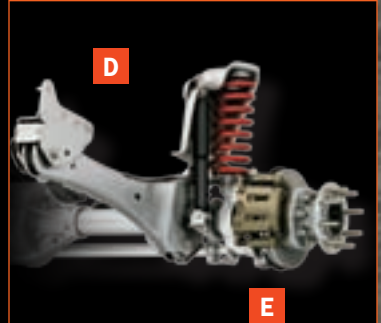
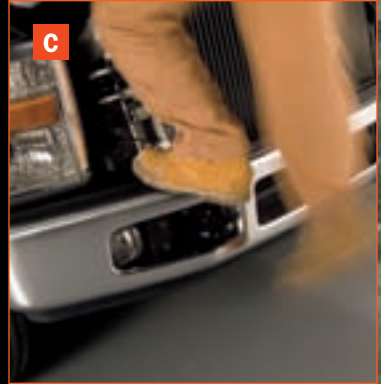
Standard on the 6-speed manual transmission and optional on the TorqShift[®] automatic, it allows installation of an aftermarket PTO unit to operate auxiliary equipment such as a wrecker,² dump bodies and hydraulic or pneumatic tools.²

H. CREW CAB REAR DOORS

These full-size doors swing extra-wide (76°) for no-hassle loading and unloading.

I. WIDE FRONT AXLE

Standard on F-450 and F-550, it allows big wheel cuts and sharp steering angles, so you can make tight turns.



Sophisticated WORK STATION

Ingenious engineering helps you squeeze into some tight spaces. On F-450 and F-550, a front suspension and steering system with large wheel cuts and a wide front axle deliver a full **U-turn in as little as 42.3'** curb-to-curb. Crew Cab doors open wide for easy access, and a **standard engine-hour meter** helps you keep maintenance on schedule. F-Series Super Duty works hard to **make your life easier.**

¹TBC verified to be compatible with electrically actuated drum brakes only.
²Available only on the 6.8L V10 and 6.4L Power Stroke[®] V8 Turbo Diesel. Obstructed by catalyst placement on 6.8L engine with manual transmission, which may require exhaust pipe re-routing to fit aftermarket PTO.

F-550 LARIAT Crew Cab in Pueblo Gold with Aftermarket Service Body Upfit and available equipment

Let's get down to BUSINESS

The Super Duty Chassis Cab can support a **huge range of applications**. Three cab styles and **multiple seating configurations** help you meet specific crew requirements. Factory-installed upfitter switches and manually telescoping trailer tow mirrors are standard, along with an available **integrated Trailer Brake Controller**. For 30+ years, **features, flexibility and capability** have earned F-Series Chassis Cabs a rugged reputation.

A. OVER-CAB CHOICE

A low-cab design optimizes Super Duty Chassis Cab for over-cab upfits.

B. ALL-AROUND RIG

Flat frame rails with a width of 34" accept a wide range of aftermarket bodies. Easy upfits put your new truck to work right away.

C. SOLID FOUNDATION

Super Duty Chassis Cabs provide tough, versatile platforms. Aftermarket installations go smoothly, which can help add to your bottom line.

D. FUEL TANK OPTIONS

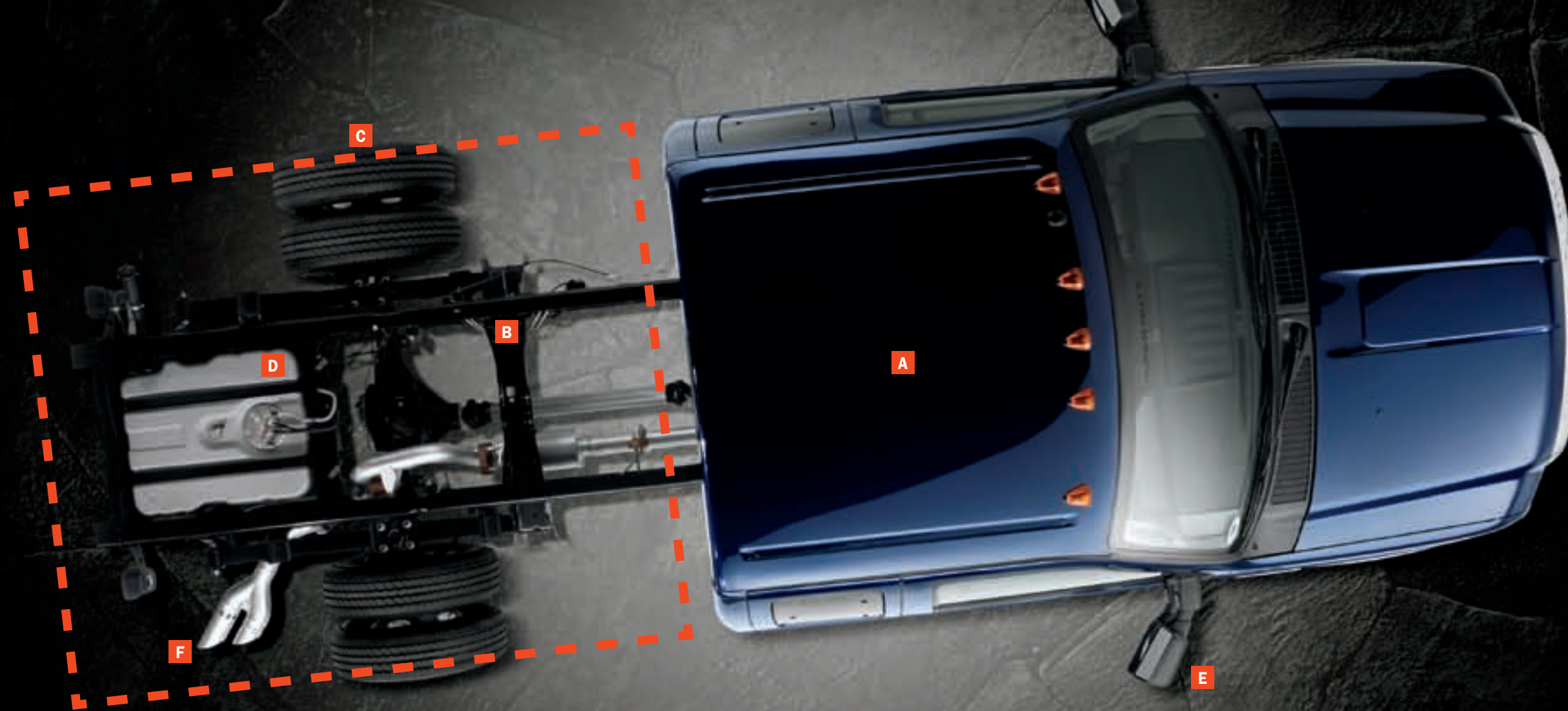
40-gallon aft-of-rear-axle is standard; 19-gallon midship is optional. Choose both on diesel DRW models for up to 59 gallons of fuel capacity.

E. POWERSCOPE™ MIRRORS

Designed specifically for Super Duty, these available large mirrors adjust, fold and telescope almost 3" on each side of the truck at the touch of a switch. They include heated glass, integrated turn signals, and clearance lamps. The manually adjustable heated spotter mirrors provide excellent all-weather visibility. No other mirror in the class¹ offers this much functionality and convenience.

F. LONG-HAUL EXHAUST

Stainless steel construction resists corrosion (major components).



PICKUP BOX DELETE

Available from the F-250/F-350 Super Duty pickup line, pickup box delete offers a rear frame width of 38" for certain applications. Save the cost of a new body by transferring the body from your old truck. Note: Pickup box delete frame rails have kick-up flanges and are not flat.

REGULAR CAB

The 3-across front seat works well for many delivery and service applications. Regular Cab configuration allows you to install the largest upfits available for your Super Duty.

SUPERCAB

4 doors give you easy access, with room for 3 rear-seat passengers or extra cargo. And there are plenty of clean-CA wheelbases for a variety of upfits.

CREW CAB

Maximum passenger room and convenience with 3-up seating front and rear as well as full-size doors for both rows. For a full-size crew and a heavy-duty truck to haul all their gear, you can't beat Super Duty Crew Cab.

¹Traditional Chassis Cab trucks under 22,000 lbs. GVWR.

PICKUP & CHASSIS CAB EXTERIOR COLORS

Oxford White	Dark Blue Pearl Metallic	Vermillion Red	Royal Red Metallic	Pueblo Gold Metallic
LARIAT, KING RANCH 	LARIAT 		LARIAT, KING RANCH 	
LARIAT 	LARIAT 		LARIAT 	
CABELA'S 				
Forest Green Metallic	Ingot Silver Metallic	Sterling Grey Metallic	White Platinum Metallic Tri-Coat	Black
LARIAT, KING RANCH 	CABELA'S 		LARIAT, KING RANCH 	LARIAT, KING RANCH
LARIAT 			LARIAT 	LARIAT
CABELA'S 			CABELA'S 	FORD HARLEY-DAVIDSON™

Two-Tone Accent Colors

	Pueblo Gold Metallic
	Ingot Silver Metallic
	Sterling Grey Metallic
	Tuxedo Black Metallic

Interior Colors (Pickups Only)

	Interior Colors	Two-Tone Accent Colors (Pickups Only)
XL		
Oxford White		
Dark Blue Pearl Metallic		
Vermillion Red		
Forest Green Metallic		
Ingot Silver Metallic		
Sterling Grey Metallic		
Black		

	Interior Colors	Two-Tone Accent Colors (Pickups Only)
XLT		
Oxford White		
Dark Blue Pearl Metallic		
Vermillion Red		
Royal Red Metallic		
Pueblo Gold Metallic		
Forest Green Metallic		
Ingot Silver Metallic		
Sterling Grey Metallic		
Black		

	Interior Colors	Two-Tone Accent Colors (Pickups Only)
LARIAT		
Oxford White		
Dark Blue Pearl Metallic		
Vermillion Red		
Royal Red Metallic		
Pueblo Gold Metallic		
Forest Green Metallic		
Ingot Silver Metallic		
Sterling Grey Metallic		
White Platinum Metallic Tri-Coat ¹		
Black		

¹Tri-Coat paint is an additional-cost option and other restrictions may apply.

Colors shown are representative only. Not all colors are available on all models. See your dealer for actual paint/trim options.

NOTE: Pueblo Gold Two-Tone only available with Camel interior. Ingot Silver Two-Tone only available with Medium Stone interior.

Fabric patterns and colors are subject to change or substitution without notice.

Interior Colors (Pickups Only)

	Interior Colors	Two-Tone Accent Colors (Pickups Only)
CABELA'S®		
Oxford White		
Forest Green Metallic		
Ingot Silver Metallic		
Black		

	Interior Colors	Two-Tone Accent Colors (Pickups Only)
KING RANCH®		
Oxford White		
Royal Red Metallic		
Forest Green Metallic		
White Platinum Metallic Tri-Coat ¹		
Black		

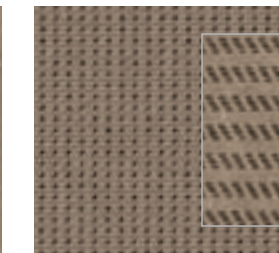
	Interior Colors	Two-Tone Accent Colors (Pickups Only)
FORD HARLEY-DAVIDSON™ PACKAGE		
Black		
Black with Tuxedo Black Metallic Flames		

INTERIORS:
 Camel Medium Stone Ebony Chaparral

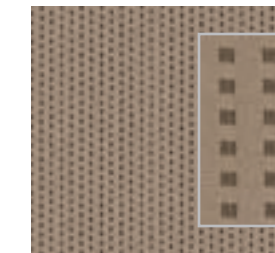
TWO-TONE ACCENT COLORS:
 Pueblo Gold Metallic Ingot Silver Metallic
 Sterling Grey Metallic Tuxedo Black Metallic



HD Vinyl – Camel
Standard on XL



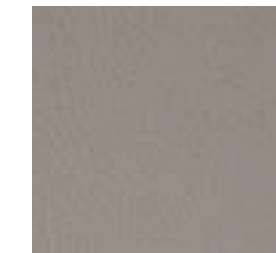
HD Cloth – Camel
Optional on XL



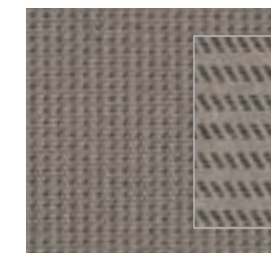
Premium Cloth – Camel
Standard on XLT



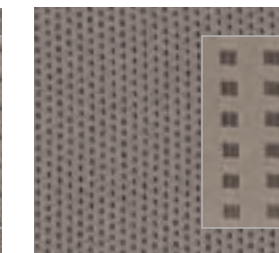
Leather – Camel
Standard on LARIAT, Optional on XLT



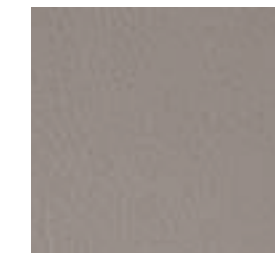
HD Vinyl – Medium Stone
Standard on XL



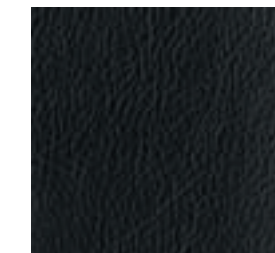
HD Cloth – Medium Stone
Optional on XL



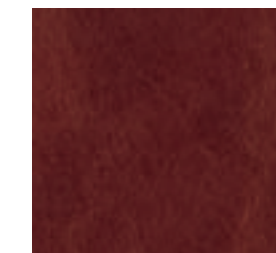
Premium Cloth – Medium Stone
Standard on XLT



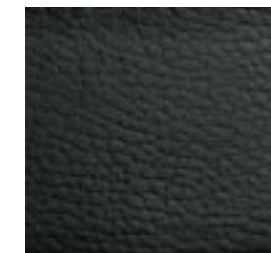
Leather – Medium Stone
Standard on LARIAT, Optional on XLT



Leather – Ebony
Standard on LARIAT



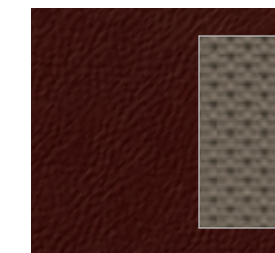
Leather – Chaparral
Standard on KING RANCH



Leather – Ebony
Standard on HARLEY-DAVIDSON Package



Cloth – Dark Rust/Medium Stone
Standard on Cabela's



Leather – Dark Rust/Medium Stone
Optional on Cabela's

SUPER DUTY® WHEELS



17" Argent-Painted Steel
Standard on F-250/F-350 SRW XL



17" 5-Spoke Cast-Aluminum
Standard on F-250 XLT



17" Argent-Painted Steel (DRW)
Standard on F-350 DRW XL & XLT



17" Forged Polished-Aluminum (DRW)
Standard on F-350 DRW LARIAT
Optional on F-350 DRW XLT

17" KING RANCH® Forged Polished-Aluminum (DRW)
Included on F-350 DRW KING RANCH

18" Argent-Painted Steel¹
Optional on F-350 SRW XL

18" Bright Machined Cast-Aluminum
Standard on F-350 SRW XLT
Optional on F-250 XLT

18" Premium Forged-Aluminum
Standard on F-250/F-350 SRW LARIAT

**18" Bright Machined Cast-Aluminum
with Cabela's® Center Cap**
Standard on F-250/F-350 SRW Cabela's

**18" KING RANCH
Painted Forged Polished-Aluminum**
Included on F-250/F-350 SRW KING RANCH

19.5" Argent-Painted Steel (DRW)
Standard on F-450/F-550 XL & XLT



19.5" Forged Polished-Aluminum (DRW)
Standard on F-450 Pickup; Standard on F-450 LARIAT Chassis Cab
Optional on F-450 XLT Chassis Cab

**19.5" KING RANCH
Forged Polished-Aluminum (DRW)**
Included on F-450 KING RANCH

**19.5" HARLEY-DAVIDSON
Polished Forged-Aluminum (DRW)**
Included on F-450 Harley-Davidson™

20" Forged Polished-Aluminum¹
Optional on F-250/F-350 SRW XLT & LARIAT

**20" Forged Polished-Aluminum
with Cabela's Center Cap¹**
Optional on F-250/F-350 SRW Cabela's

**20" KING RANCH
Premium Painted Forged-Aluminum¹**
Optional on F-250/F-350 SRW KING RANCH

**20" HARLEY-DAVIDSON
Polished/Painted Forged-Aluminum¹**
Included on F-250/F-350 SRW Harley-Davidson™

¹Other restrictions apply.

FORD CUSTOM ACCESSORIES

- Also available:**
- Remote Start Systems
 - Vehicle Security System
 - SmartAlert™ GPS Tracking and Recovery¹
 - Side Window Deflectors
 - Tonneau Covers¹
 - Soft-Folding
 - Hard-Folding
 - THULE® Racks, Carriers and Cargo Holders¹
 - Bed Rail Protector
 - Bed Liners
 - Bed Mats
 - Sportz® Truck Camping Tent¹
 - EchoMaster® HitchScan™ Rear Park Assist Sensor/
Hitch Step¹
 - Wiper Shaker De-Icer and Debris Cleaner¹
 - Wheel Locks
 - Ashcup/Coin Holder/Smoker's Pack

¹Ford Licensed Accessories.

To learn more about Ford Custom Accessories and to buy them online, visit fordaccessories.com.

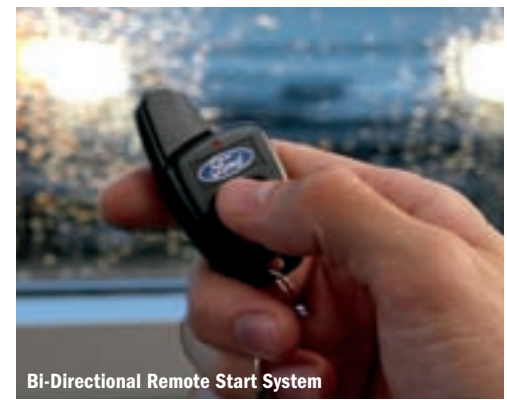
Genuine Ford Accessories will be warranted for whichever provides you the greatest benefit: 12 months or 12,000 miles (whichever occurs first), or the remainder of your Bumper-to-Bumper 3-year/36,000-mile New Vehicle Limited Warranty. Contact your local Ford Dealer for details and a copy of the limited warranty. Ford Licensed Accessories (FLA) are warranted by the accessory manufacturer's warranty. Contact your Ford Dealer for details regarding the manufacturer's limited warranty and/or a copy of the FLA product limited warranty offered by the accessory manufacturer.



Bed Liners w/Tailgate Liners



Soft Roll-Up Tonneau Covers¹



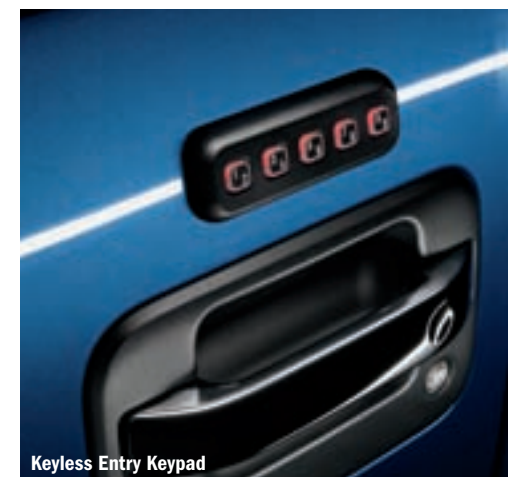
Bi-Directional Remote Start System



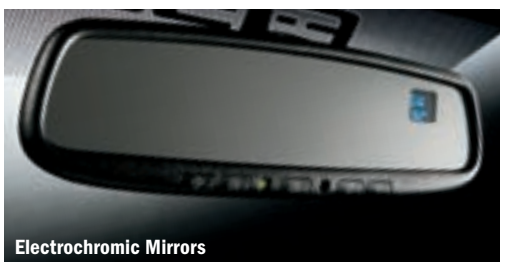
Garmin® Portable Navigation Systems¹



All-Weather Floor Mats



Keyless Entry Keypad



Electrochromic Mirrors



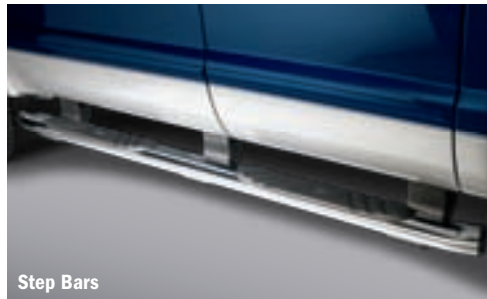
Interior Soft Cargo Cooler Bag



Interior Soft Cargo Organizers
(Large and Standard Size)



Hood Deflectors (Shown in Chrome)



Step Bars



Trailer Hitch Balls/Draw Bars



Stowable Bed Extender



Chrome Exhaust Tip



Bed Hooks



Trailer Tow Mirrors



Splash Guards



Stainless Steel Wheel Covers¹