

2016 | **TRANSIT CONNECT**



YOUR PERFECT PARTNER. FOR WORK OR PLAY.

The 2016 Ford Transit Connect Van can help bring your business to life. Or, with up to 7 seats and new BLIS® (Blind Spot Information System) with cross-traffic alert,¹ Transit Connect Wagon keeps you on the go. Either way, this Built Ford Tough® workhorse gets the most important job – your job – done.



Titanium Long Wheelbase Wagon. Solar. Available equipment.

¹Available feature. Driver-assist features are supplemental and do not replace the driver's attention, judgment and need to control the vehicle.

2016 **TRANSIT CONNECT**
ford.com





WORK PROVEN. TRAVEL READY.

With the 2016 Ford Transit Connect, available in Van and passenger Wagon, you've got work or play covered.

The ideal tool to help bring your business to life, Transit Connect Van features abundant cargo room, plus a flat load floor behind the front seats. With its durable vinyl floor covering and easy access to the cargo area, deliveries or on-site business calls are a snap.

With seating for up to 7, Transit Connect Wagon is the ideal space for busy families on the go. Plus, Transit Connect Wagon received the government's highest safety rating: a 5-star Overall Vehicle Score.¹

Get an unsurpassed in its class EPA-estimated rating of 29 mpg highway² when equipped with the 1.6L EcoBoost[®] engine.³ Whether building your business or making memories, Transit Connect helps you go further.

XLT Long Wheelbase Van. Frozen White. XLT Long Wheelbase Wagon. Tectonic Silver. Available equipment.

¹Government's 5-Star Safety Ratings are part of the U.S. Department of Transportation's (NHTSA's) New Car Assessment Program (www.safercar.gov).

²Class is Small Vans based on Ford segmentation. EPA-estimated rating of 22 city/29 hwy/25 combined mpg, 1.6L EcoBoost. Actual mileage will vary. ³Available feature.

2016 **TRANSIT CONNECT**
ford.com



COMMAND IT WITH YOUR VOICE.

Voice-activated SYNC^{®1,2} technology helps you keep your eyes on the road and hands on the wheel. SYNC. Say the word.[®]

- **Hands-free calling** lets you make a call with a simple push of a button along with the sound of your voice.
- **Automatic phone book download** transfers the names and numbers in your compatible phone automatically, once paired.
- **Voice-activated music commands** let you say what music you want to hear and listen to it easily with voice-activated search, or say “Bluetooth[®] audio” to stream content from your phone.
- **SYNC AppLink^{™1,3}** lets you control some of your favorite compatible mobile apps with your voice.
- **911 Assist^{®4}** is a convenient no-charge feature that allows you to connect your compatible cell phone to help call 911, even if you can't.

Upgrade to SYNC with MyFord Touch.^{®1,2}

- **An LCD screen** lets you easily read and control the things you want.
- **Voice-activated navigation¹** features voice-recognition technology that lets you say commands as conversational as “find a restaurant.” The system then helps guide you to your destination with audible turn-by-turn directions.
- **Voice control climate** lets you use your voice to adjust the climate, so you can stay comfortable without having to lift a finger.

| SYNC



¹Available feature. ²Driving while distracted can result in loss of vehicle control. Only use SYNC/MyFord Touch/other devices, even with voice commands, when it is safe to do so. Some features may be locked out while the vehicle is in gear. Not all features are compatible with all phones. ³SYNC AppLink is available on select models and compatible with select smartphone platforms. SYNC AppLink is not compatible with MyFord Touch. Commands may vary by phone and AppLink software. ⁴The vehicle's electrical system (including the battery), the wireless service provider's signal and a connected mobile phone must all be available and operating for 911 Assist to function properly. These systems may become damaged in a crash. The paired mobile phone must be connected to SYNC, and the 911 Assist feature enabled, in order for 911 to be dialed. When the feature is ON, 911 Assist uses your paired and connected mobile phone to assist occupants to contact emergency services by dialing 911 if your airbag deploys or, on certain vehicles, if the emergency fuel pump shut-off is activated. Aftermarket on-board diagnostic devices may interfere with various vehicle systems including Vehicle Health Report and 911 Assist. To avoid interference, remove the device or contact the device maker for more information on compatibility.

2016 **TRANSIT CONNECT**
ford.com





SPACE FOR UP TO 7. AMENITIES FOR ALL.

The 2016 Transit Connect Wagon surrounds you in comfort, style and safety. Outside, take a liking to new 17" premium aluminum wheels¹ (see cover for reference). Inside, new second-row fold-flat bucket seats¹ (shown above) give you the space you need to relax.

In stylish leather-trimmed seats¹, your coffee or H₂O stays close at hand thanks to cupholders in each row, including 2 in the 2nd-row bench armrest.¹ Watch passengers in rows 2 and 3¹ with a convenient observation mirror.¹

Charge your mobile phone with the center console's 12-volt powerpoint. For passengers, there are also 2 powerpoints in back.

With a 5-star Overall Vehicle Score, the Transit Connect Wagon received the government's highest safety rating.² Six standard airbags³ include a Safety Canopy[®] System with rollover sensor and side-curtain airbags for all outboard passengers. Safety, after all, is always in style.

SiriusXM[®] Satellite Radio¹ welcomes you to the World of SiriusXM.⁴ Enjoy more than 150 channels including commercial-free music, plus live sports, news and exclusive entertainment, with a 6-month trial subscription to the All Access package included with your new vehicle. You'll hear every channel available, plus you can listen online and on the SiriusXM app.⁴

Navigation¹ with SiriusXM Traffic and Travel Link[®] includes a 5-year complimentary SiriusXM Traffic and Travel Link⁴ trial subscription. Global Positioning System (GPS) technology is combined with 3-D mapping and provides voice-guided turn-by-turn directions. With SiriusXM Traffic and Travel Link, you'll get detailed traffic information, plus current and forecasted weather, gas station locations and prices, sports scores and schedules, and movie theater locations with show listings and times.

((SiriusXM))

Titanium 6-passenger Wagon. Medium Stone leather trim. Available equipment.



2016 **TRANSIT CONNECT**
ford.com

¹Available feature. ²Government's 5-Star Safety Ratings are part of the U.S. Department of Transportation's (NHTSA's) New Car Assessment Program (www.safercar.gov). ³Always wear your safety belt and secure children in the rear seat. ⁴SiriusXM Satellite Radio, SiriusXM Traffic and SiriusXM Travel Link subscriptions are sold separately or as a package by SiriusXM after your trial period, and are continuous until you call SiriusXM at 1-866-635-2349 to cancel. If you decide to continue service after your trial, the subscription plan you choose will automatically renew thereafter and you will be charged according to your chosen payment method at then-current rates. Fees and taxes apply. All fees and programming subject to change. See Customer Agreement for complete terms and more information at www.siriusxm.com.



ACCESS ADVENTURE.

Through the doors of Ford Transit Connect Wagon. Enjoy easy entry and exit thanks to its dual sliding side doors, as well as your choice of a rear liftgate (shown above) or 180° swing-out rear cargo doors.¹

New BLIS® (Blind Spot Information System) with cross-traffic alert^{2,3} helps you stay aware of traffic detected in your blind spots. The system works as you drive forward, or when traffic nears either side of the vehicle as you slowly back up. Lights embedded in the sideview mirrors help warn you.

Enjoy a panoramic fixed-glass Vista Roof®² with power sunshade, plus power 2nd-row windows with one-touch-up/-down.² In short-wheelbase models, 2nd-row seats fold forward or can be removed. In long-wheelbase models, 2nd- and 3rd-row seats fold down to create a flat load floor.

With more available configurations on the long-wheelbase Wagon than any other vehicle in its class, your options are wide open. Carry passengers. Personal gear. Or carry it all together. No worries here.

XLT Long Wheelbase Wagon. Tectonic Silver. Available equipment.

¹Available feature. ²Available feature. Wagon models only. ³Driver-assist features are supplemental and do not replace the driver's attention, judgment and need to control the vehicle.

2016 **TRANSIT CONNECT**
ford.com



FUEL YOUR ENTHUSIASM.

Ford Transit Connect is the perfect match for high-energy lifestyles.

Unsurpassed performance comes from the turbocharged, direct-injection 1.6L EcoBoost® engine¹ that delivers 178 hp,² 184 lb.-ft. of torque and a maximum towing capacity of 2,000 lbs.³ To maximize aerodynamic efficiency and maintain ideal EcoBoost engine temperatures, Transit Connect automatically opens and closes its Active Grille Shutters.

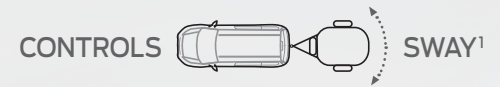


Shift for yourself, or leave it to Transit Connect, with the 6-speed SelectShift® automatic transmission that's mated to both engines, including the standard 2.5L. Torque Vectoring Control,⁴ Curve Control⁴ and trailer sway control^{1,4} add additional layers of driving and trailer-towing confidence.

Throw additional light alongside the vehicle with cornering fog lamps,⁵ which are great for pre-dawn adventures. And quickly clear fog, snow, sleet and ice with the Quickclear™ electric windshield defroster.



UNSURPASSED IN ITS CLASS
EPA-ESTIMATED RATING  **29 HWY MPG⁵**



XLT Short Wheelbase Wagon. Magnetic. Available equipment.

¹Available feature. ²Tested with 93-octane fuel. ³When properly equipped. ⁴Remember that even advanced technology cannot overcome the laws of physics. It's always possible to lose control of a vehicle due to inappropriate driver input for the conditions. ⁵EPA-estimated rating of 22 city/29 hwy/25 combined mpg, 1.6L EcoBoost. Actual mileage will vary.

2016 **TRANSIT CONNECT**
ford.com





DELIVERS THE GOODS. 24/7.

With the front-passenger seat folded down, Transit Connect Van swallows up to 149.0 cu. ft. of cargo.¹

Access is easy through dual sliding side doors, or through your choice of rear doors: 180° swing-out cargo doors (great when you have a ladder rack up top) with or without fixed glass² or a single liftgate² with fixed glass that's easy to raise and lower (even providing some rain protection when loading). With the room you need to stay on schedule, Transit Connect Van has a huge appetite for work.

Showcase your company name and details on Transit Connect Van's large exterior panels, letting others quickly know your business.

Thanks to a low load floor height (under 2'), moving things in and out is no sweat. Add in a 36.1' curb-to-curb turning diameter³ for negotiating tight places, along with a rear view camera^{2,4} and Forward and Reverse Sensing Systems^{2,4} for help in parking, and you've got a vehicle that helps you get more done – each and every day.



36.1' SWB
curb-to-curb
40.0' LWB



48.3"
sliding side door
opening height



180°
swing-out rear
cargo doors

XLT Long Wheelbase Van. Dual cargo doors. Frozen White. XLT Long Wheelbase Van with liftgate. Race Red. Available and aftermarket upfit equipment.

¹Long-wheelbase model. Cargo and load capacity limited by weight and weight distribution. ²Available feature. ³Short-wheelbase Van. Long-wheelbase Van is 40.0'.

⁴Driver-assist features are supplemental and do not replace the driver's attention, judgment and need to control the vehicle.

2016 **TRANSIT CONNECT**
ford.com





EASILY HANDLE BIG EXPECTATIONS.

Behind its comfortable front seats, trimmed in durable vinyl or rugged cloth,¹ Transit Connect Van holds the long, tall and short of your business. Starting with a maximum payload rating of 1,620 lbs.² In the long-wheelbase Van, fold the passenger seat down for up to 149.0 cu. ft. of cargo room. Items up to 4' wide, 4' tall, or over 9' long will fit inside.

The flat load floor, durable vinyl floor covering, cargo tie-down hooks and near-vertical walls help you make the best use of all that room to transport larger loads, and it's washable for quick cleanup after the work is done. With low side and rear load-floor heights, sliding side door access from either side, plus 180° swing-out rear cargo doors,¹ Transit Connect Van performs like your warehouse on wheels.



2016 **TRANSIT CONNECT**
ford.com

¹Available feature. ²When properly equipped. Cargo and load capacities limited by weight and weight distribution. ³101.1"/116.9" (Van SWB/LWB) with passenger seat folded down.



ENHANCE PRODUCTIVITY. ALWAYS GOOD BUSINESS.

Which Ford Transit Connect is right for you? Van? Wagon? Short or long wheelbase? XL, XLT or Titanium trim? By offering a full lineup of Built Ford Tough® vehicles, Transit Connect offers exceptional versatility. A hard worker right from the factory, Transit Connect Van can do even more with upfits for your line of work – like the cargo management packages¹ shown at right. Durable bulkhead partitions¹ and flexible interior storage systems¹ can help create a Transit Connect Van that's tailored to you.



Katerack®
by Dejana Cargo & Van Interiors

Dejana offers rear and side Katerack® shelving systems with heavy-duty pull-out drawers. Standard 6" and 10" shelves; plus trade-ready packages for a wide variety of vocations, including contractors and service technicians.

Leggett & Platt
Commercial Vehicle Products

Leggett & Platt CVP offers Masterack® cargo management systems: steel racks & bins, lightweight composite SmartSpace™ shelving packages, drawer storage cabinets, ladder racks, window screens, and accessories.



ADRIAN STEEL
Cargo Management Solutions for Commercial Vehicles

Adrian Steel offers wire and steel bulkheads; cargo management packages with adjustable shelving, versatile ladder racks, floor drawers for lockable storage, and window screens for security.

Sortimo
By
KNAPHEIDE

Sortimo By Knapheide offers ABS Protexx Partitions® (with and without a window); Exxpand® base shelving packages for either the street side, curbside or both; and a variety of Boxxes® and Axxessories® to upgrade the base packages to meet the vocational needs of today's contractors.



¹Available feature.

TRANSIT CONNECT SPECIFICATIONS

STANDARD FEATURES



Van (Short Wheelbase)



Van (Long Wheelbase)



Wagon (Short Wheelbase)



Wagon (Long Wheelbase)

Mechanical

2.5L DOHC I-4 engine
6-speed SelectShift® automatic transmission
Alternator – 150-amp
(Van and SWB Wagon with 2.5L I-4)
Alternator – 175-amp (Van and SWB Wagon with 1.6L I-4 and LWB Wagon with 2.5L I-4)
Battery – 590 Cold Cranking Amps, 60-amp-hr
Battery saver
Electric power-assisted steering
Front-wheel drive (FWD)
Fuel tank – 15.8-gallon
Full-size spare wheel and tire
Hill start assist
Suspension – Front: independent MacPherson-strut; rear: twist-beam
Torque Vectoring Control

Seating

2-passenger seating (Van)
5-passenger seating (SWB Wagon)
Front bucket seats
3rd-row 2-passenger fold-flat seats (LWB Wagon only)

Interior

12-volt powerpoint in center console (Van)
12-volt powerpoints – 2 in center console (front and rear) and 1 in rear cargo area (Wagon)
Auxiliary audio input jack
Cargo area tie-down hooks (floor-mounted)
Driver's seat back map pocket (Wagon)
Dual front map lights and rear overhead courtesy light (Wagon)
Front doors – Inner door bins with bottle recesses and illuminated window switches
Instrumentation – Speedometer (mph/kph) with tachometer and trip computer
Overhead storage shelf with grab handles (Van)

Power door locks with central locking
Premium front center closable console with 2 cupholders (Wagon)
Rear cargo area light (Van)
Rear cupholders – 2 for 2nd row and 2 for 3rd row (Wagon; 3rd-row LWB only)
Remote Keyless Entry System with 2 key fobs
Tilt/telescoping steering column
Windows – Power front with one-touch-down on driver's side (Van)

Exterior

Bodyside moldings – Gray (Van)
Cargo doors – Rear, 180° swing-out (Van; no 2nd-row glass or rear glass)
Door handles – Black (Van)
Dual sliding side doors (no glass on Van)
Easy Fuel® capless fuel filler
Grille and upper grille bar – Gray (Van)
Halogen headlamps
Headlamp bezels – Black (Van)
Rear liftgate with fixed glass (Wagon)
Wipers – Variable-intermittent front (Van and Wagon) and rear with wash feature (Wagon)

Safety & Security

AdvanceTrac® with RSC® (Roll Stability Control™) and Curve Control
Airbags¹ – Driver and front-passenger front
Airbags¹ – Front-seat side
Airbags¹ – Side-curtain for 1st row (Van)
Airbags¹ – Side-curtain for all rows (Wagon; SWB Wagon has 1st/2nd rows; LWB Wagon has 1st/2nd/3rd rows)
Brakes – Power 4-wheel disc with Anti-Lock Brake System (ABS)
SecuriLock® Passive Anti-Theft System
Tire Pressure Monitoring System (excludes spare)

DIMENSIONS

	Van SWB 2-seater	Van LWB 2-seater	Wagon SWB 5-seater	Wagon LWB 7-seater
Exterior				
Wheelbase	104.8"	120.6"	104.8"	120.6"
Length	173.9"	189.7"	173.9"	189.7"
Height	72.5"	72.8"	72.6"	72.0"
Width – Excluding mirrors	72.2"	72.2"	72.2"	72.2"
Width – Including mirrors	84.1"	84.1"	84.1"	84.1"
Width – Mirrors folded	77.4"	77.4"	77.4"	77.4"
Track – Front	61.4"	61.4"	61.4"	61.4"
Track – Rear	61.7"	61.7"	61.7"	61.7"
Overhang – Front	34.6"	34.6"	34.6"	34.6"
Overhang – Rear	34.6"	34.6"	34.6"	34.6"

Interior (1st/2nd/3rd row)

Head room	46.9"/–/–	46.9"/–/–	46.9"/45.1"/–	46.9"/45.1"/41.3"
Shoulder room	57.7"/–/–	57.7"/–/–	57.7"/58.5"/–	57.7"/58.5"/56.3"
Hip room	54.2"/–/–	54.2"/–/–	54.2"/58.3"/–	54.2"/58.2"/47.0"
Leg room (max. 1st row)	41.5"/–/–	41.5"/–/–	41.5"/37.6"/–	41.5"/37.6"/35.0"

Cargo Area

Length – Front at floor	71.5"	87.3"	70.9"	85.8"
Length – Front at belt	61.3"	77.1"	60.9"	76.7"
Length with front-passenger seat folded (Van only)	101.1"	116.9"	–	–
Load floor height (curb)	23.4"	23.7"	23.5"	22.7"
Side cargo door opening height	48.3"	48.3"	44.9"	44.9"
Side cargo door opening width	24.1"	33.0"	24.1"	33.0"
Rear cargo door opening height	44.0"	44.0"	45.1"	45.1"
Rear cargo door opening width	49.3"	49.3"	47.0"	47.0"
Width between wheelhouses	48.3"	48.3"	46.9"	46.9"
Height (max.)	49.7"	49.7"	49.0"	42.2"

Capacities

Passenger volume (cu. ft.)	63.2	63.2	120.7	166.0
Max. towing (lbs.)	2,000	2,000	2,000	2,000
Max. GVWR (lbs.)	5,020	5,270	4,820	5,280
Max. payload (lbs.)	1,470	1,620	1,130	1,270

Cargo Volume (cu. ft.)

Behind 1st row (with 2nd-row seat folded)	–	–	77.1	104.2
Behind 2nd row	–	–	46.9	58.9
Behind 3rd row (with 3rd-row in design position)	–	–	–	15.7
Behind 3rd row (with 3rd-row seat moved to most forward position)	–	–	–	19.8
Behind 1st row (Van only; no 2nd- or 3rd-row seats)	103.9	128.6	–	–
Maximum with front-passenger seat folded (Van only; without bulkhead)	124.3	149.0	–	–

Dimensions may vary by trim level. Cargo and load capacity limited by weight and weight distribution when properly equipped. *Always wear your safety belt, secure children in the rear seat and follow airbag warning label instructions. †Tested with 93-octane fuel.

CONFIGURATIONS



Van (Short Wheelbase) – Available as XL, XLT



Van (Long Wheelbase) – Available as XL, XLT



Wagon (Short Wheelbase) – Available as XLT



Wagon (Long Wheelbase) – Available as XL, XLT, Titanium

ENGINES/ EPA-ESTIMATED RATINGS

2.5L DOHC I-4

169 hp @ 6,000 rpm
171 lb.-ft. of torque @ 4,500 rpm
6-speed SelectShift automatic transmission
19 city/27 hwy/22 combined mpg (Wagon)
20 city/28 hwy/23 combined mpg (Van)

1.6L EcoBoost® I-4

178 hp @ 5,700 rpm²
184 lb.-ft. of torque @ 2,500 rpm
6-speed SelectShift automatic transmission
22 city/29 hwy/25 combined mpg (SWB Wagon)
22 city/29 hwy/25 combined mpg (Van)

2016 TRANSIT CONNECT
ford.com



XL



XL Wagon. Charcoal Black cloth.¹ Available equipment.

6-speed SelectShift[®] automatic transmission.

6-way manual driver's seat with recline.¹

Driver's seat manual lumbar.¹



16" Steel with Styled Wheel Cover Standard

XL VAN

Includes all standard features, plus:

Configurations

Short Wheelbase – 2-passenger

Long Wheelbase – 2-passenger

Mechanical

16" steel wheels with styled wheel covers and 215/55R16 all-season tires

Seating

4-way manual driver's seat with manual recline

4-way manual front-passenger seat with folding back and manual recline

Pewter vinyl seating surfaces

Interior

AM/FM stereo with 2 speakers

Air conditioning with manual front controls

Flooring – Vinyl front; molded-in vinyl liner in rear cargo area

Front center console with 2 cupholders

Exterior

Bumpers – Gray front and rear

Fog lamp bezels – Black

Mirrors – Black sideview, manually adjustable glass, manual folding with integrated blind spot mirrors

Rear bumper end caps – Gray

Available Options

Mechanical

1.6L EcoBoost[®] engine with Active Grille Shutters

Seating

6-way manual driver's seat with manual lumbar and 4-way manual passenger seat with fold-flat back and manual recline (also available without fold-flat passenger seat)

Interior

Rear cargo area light – LED

Windows – Fixed 2nd-row driver and passenger side (requires fixed rear glass)

Windows – Fixed 2nd-row passenger side

Exterior

Cargo doors – Rear, 180° swing-out with fixed glass

Mirrors – Large sideview (recommended for towing; requires power-adjustable, heated mirrors)

Rear liftgate with fixed glass

XL WAGON

Includes select XL Van features, plus:

Configuration

Long Wheelbase – 7-passenger

Seating

2nd-row 3-passenger 60/40 split folding seat

6-way manual driver's seat with manual lumbar/recline

Interior

AM/FM stereo with 4 speakers (2 front, 2 rear)

Air conditioning with manual front and rear controls – Includes rear-compartment air conditioning and heater with manual controls

Day/night rearview mirror

Flooring – Vinyl in front, 2nd and 3rd rows, and rear cargo area

Overhead storage shelf with grab handles

Windows – Power front with one-touch-down on driver's side

Exterior

Bodyside moldings – Gray

Door handles – Black

Grille and upper grille bar – Gray

Headlamp bezels – Black

Rear liftgate with fixed glass (includes power 2nd-row windows and fixed 3rd-row glass)

Available Package

Taxi Package includes AM/FM stereo with 4 speakers (2 front/2 rear); manual electric air conditioning; power front windows with one-touch-up/-down; power-adjustable, heated, manual-folding sideview mirrors; recessed 2nd-row seat; 180° swing-out rear cargo doors (includes one-touch-up/-down power 2nd-row windows and fixed 3rd-row/rear-door glass); rear-window defroster; 4 manual keys; and Taxi upfit wiring harness (deletes 3rd-row seating and SecuriLock[®] Passive Anti-Theft System)

Available Options

Interior

Cargo net kit – Vertical (divides seat from cargo area)

Forward Sensing System (includes Reverse Sensing System; requires cornering fog lamps)

Overhead console – Aircraft-style, mid-vehicle (n/a with Taxi Package)

Exterior

Cargo doors – Rear, 180° swing-out (includes power 2nd-row windows)

Cornering fog lamps (n/a with Taxi Package)

Roof wiring hole (only available with Taxi Package)

XL VAN & WAGON

Available Packages

CNG/Propane Gaseous Engine Prep Package (2.5L DOHC I-4 engine)

Trailer Tow Package includes Class I trailer hitch receiver, trailer module, 4-pin connector and trailer sway control (n/a with Taxi Package)

Available Options

Mechanical

Engine block heater

Upfitter wiring harness (LWB only; n/a with Taxi Package)

Seating

Charcoal Black cloth seating surfaces

Interior

AM/FM stereo/single-CD player

AM/FM stereo/single-CD player with rear view camera

AM/FM stereo/single-CD player with Ford SYNC[®] (requires cruise control)

AM/FM stereo/single-CD player with SYNC and rear view camera (requires cruise control)

Cruise control

Key fobs (2 additional; n/a with Taxi Package)

MyKey[®] (requires cruise control; n/a with Taxi Package)

Perimeter alarm (n/a with Taxi Package)

Reverse Sensing System (included with Forward Sensing System on Wagon)

Smoker's Pack – Includes 1 ash cup (n/a with Taxi Package)

Exterior

Daytime running lamps

Ford Telematics[™] powered by Telogis^{®2} – Fleet-tracking system (includes 1 year of subscription service)

Mirrors – Black sideview, power-adjustable glass, heated, manual folding with integrated blind spot mirrors (included with Quickclear[™] electric windshield defroster)

Privacy glass from B-pillars back

Quickclear electric windshield defroster – Includes power-adjustable, heated sideview mirrors (n/a on Taxi Package)

Rear-window defroster (requires fixed rear glass; included with Taxi Package)

Splash guards (front and rear)

Available Fleet-Only Options

3rd-row seats delete (Wagon)

Speed limitation – 65-mph governed top speed (n/a with MyKey)

Speed limitation – 75-mph governed top speed (n/a with MyKey)

¹Available feature. ²Ford Licensed Accessory.

XLT VAN

Includes select XL Van features, plus:

Configurations

Short Wheelbase – 2-passenger

Long Wheelbase – 2-passenger

Mechanical

16" steel wheels with styled wheel covers and 215/55R16 all-season tires

Seating

6-way manual driver's seat with manual lumbar/recline

Charcoal Black or Medium Stone cloth seating surfaces

Interior

4.2" color LCD multifunctional screen

12-volt powerpoint in rear cargo area

AM/FM stereo/single-CD player

Cruise control

Door handles – Satin-chrome

Driver and front-passenger sun visors with vanity mirrors; driver's side includes ticket strap

Dual front map lights

Flooring – Carpet in front with carpeted floor mats; molded-in vinyl liner in rear cargo area

In-cluster message center

MyKey®

Premium front center closable console with 2 cupholders

Steering wheel – Satin-chrome accents

Exterior

Bumpers – Body-color front, gray rear

Fog lamps with body-color bezels

Mirrors – Black sideview, power-adjustable glass, heated, manual folding with integrated blind spot mirrors

Privacy glass from B-pillars back (included when ordered with 2nd-row glass or fixed rear glass)

Rear bumper end caps – Body-color

Available Package

CNG/Propane Gaseous Engine Prep Package (2.5L DOHC I-4 engine)

Available Options

Seating

6-way manual driver's seat with manual lumbar and 4-way manual passenger seat (non-fold-flat back) with manual recline

Interior

AM/FM stereo/single-CD player with Ford SYNC®

AM/FM stereo/single-CD player with rear view camera

AM/FM stereo/single-CD player with SYNC, SiriusXM® Satellite Radio with 6-month All Access trial subscription, and HD Radio™ Technology

Flooring – All-weather floor mats (front)

Rear cargo area light – LED

Windows – Fixed 2nd-row driver and passenger side (requires fixed rear glass)

Windows – Fixed 2nd-row passenger side

Exterior

Cargo doors – Rear, 180° swing-out with fixed glass

Mirrors – Large sideview (recommended for towing)

Rear liftgate with fixed glass

Rear-window defroster (requires fixed rear glass)

¹Ford Licensed Accessory. ²Available feature.

XLT WAGON

Includes select XLT Van features, plus:

Configurations

Short Wheelbase – 5-passenger

Long Wheelbase – 6- or 7-passenger

Seating

2nd-row 60/40 split-fold seat with folding armrest (includes 2 cupholders)

2nd-row 60/40 removable fold-and-tumble seat (SWB only)

Interior

AM/FM stereo/single-CD player with 4 speakers and rear view camera

Day/night rearview mirror

Flooring – Carpet in front (includes carpeted floor mats), 2nd row, 3rd row (LWB), and rear cargo area

In-floor storage (behind front-passenger seat)

Overhead storage shelf with grab handles, sunglasses holder and child observation mirror

Windows – Power front with one-touch-up/-down

Exterior

Acoustic-laminate windshield

Bodyside moldings – Body-color

Bumpers – Body-color

Door handles – Body-color

Rear liftgate with fixed glass (includes one-touch-up/-down power 2nd-row windows and fixed 3rd-row glass)

Rear-window defroster

Available Options

Mechanical

17" aluminum wheels with locking wheel lugs

17" premium Black-painted machined aluminum wheels

Seating

6-way power driver's seat with power recline and 4-way manual front-passenger seat with manual recline (both seats include manual lumbar and seat back map pockets)

Medium Stone leather-trimmed seating surfaces

Second-row fold-flat bucket seats (LWB)

Interior

Cargo net kit – Vertical (divides seat from cargo area)

Flooring – All-weather floor mats (1st and 2nd row)

Flooring – Black vinyl cargo area (includes 3rd row on LWB)

Flooring – Carpeted floor mats (2nd-row; 2-piece kit)

Overhead console – Aircraft-style, mid-vehicle (n/a with panoramic fixed-glass Vista Roof®)

Overhead console – Aircraft-style, rear (SWB; requires panoramic fixed-glass Vista Roof)

Panoramic fixed-glass Vista Roof with power sunshade (includes roof rails; n/a with 180° swing-out rear cargo doors)

Rear cargo area cover (SWB; requires rear liftgate)

Exterior

BLIS® (Blind Spot Information System) with cross-traffic alert

Cargo doors – Rear, 180° swing-out (includes one-touch-up/-down power 2nd-row windows and fixed 3rd-row/rear glass)

Mirrors – Black sideview, power-adjustable glass, heated, power-folding with integrated blind spot mirrors

Roof rack with crossbars

Roof rails

XLT VAN & WAGON

Available Package

Trailer Tow Package includes Class I trailer hitch receiver, trailer module, 4-pin connector and trailer sway control

Available Options

Mechanical

1.6L EcoBoost® engine with Active Grille Shutters (n/a with LWB Wagon)

Engine block heater

Upfitter wiring harness (LWB only)

16" aluminum wheels with locking wheel lugs

Interior

AM/FM stereo/single-CD player with SYNC and rear view camera

AM/FM stereo/single-CD player with SYNC, SiriusXM Satellite Radio with 6-month All Access trial subscription, HD Radio Technology and rear view camera

MyFord Touch® with 6.5" color LCD touch screen, media hub and rear view camera – Includes AM/FM stereo/single-CD player, Navigation System, SiriusXM Traffic and Travel Link® with 5-year subscription, and HD Radio Technology

Dual-zone electronic automatic temperature control
Flooring – Black vinyl 1st and 2nd rows (requires vinyl cargo area; 2nd row on Wagon only; n/a with 2nd-row fold-flat bucket seats on Wagon)

Forward Sensing System

Key fobs (2 additional)

Perimeter alarm

Remote Start System (includes perimeter alarm)

Reverse Sensing System (included with Forward Sensing System)

Smoker's Pack – Includes 1 ash cup

Exterior

Automatic headlamps – Wiper-activated with follow-me-home lighting (requires SYNC; Van requires Quickclear™ electric windshield defroster)

Cornering fog lamps

Daytime running lamps

Ford Telematics™ powered by Telogis®¹ – Fleet-tracking system (includes 1 year of subscription service)

Quickclear electric windshield defroster – Includes power-adjustable, heated sideview mirrors

Splash guards (front and rear)

Available Fleet-Only Option

3rd-row seats delete (LWB Wagon)



XLT Wagon. Medium Stone cloth. Available equipment.

BLIS with cross-traffic alert?²

SYNC steering wheel controls?²

USB port in front center console.²



16" Steel with Styled Wheel Cover Standard



16" Aluminum with Locking Wheel Lugs Optional



17" Aluminum with Locking Wheel Lugs Optional on Wagon



17" Premium Black-Painted Machined Aluminum Optional on Wagon

TITANIUM WAGON



Titanium Wagon. Medium Stone leather trim. Available equipment.

Aircraft-style, mid-vehicle overhead console with storage.¹

In-floor storage compartment behind front-passenger seat.

Heated front seats.



16" Aluminum with Locking Wheel Lugs
Standard



17" Aluminum with Locking Wheel Lugs
Optional



17" Premium Black-Painted Machined Aluminum
Optional

Includes XLT LWB Wagon features, plus:

Configuration

Long Wheelbase – 6-passenger

Mechanical

16" aluminum wheels with locking wheel lugs and 215/55R16 tires

Seating

6-way power driver's seat with power recline and 4-way manual front-passenger seat with manual recline (both seats include heat, manual lumbar and seat back map pockets)

Medium Stone leather-trimmed seating surfaces
Second-row fold-flat bucket seats

Interior

AM/FM stereo/single-CD player with Ford SYNC®, rear view camera and 6 speakers (4 in front/2 in rear)

Auto-dimming rearview mirror

Compass display

Dual-zone electronic automatic temperature control

Flooring – 1st- and 2nd-row carpeted floor mats

Leather-wrapped steering wheel and shifter knob

Locking and illuminated glove compartment

Exterior

Automatic headlamps with chrome bezels – Wiper-activated with follow-me-home lighting

Cornering fog lamps

Grille – Gray with chrome surround and chrome upper bar

Mirrors – Body-color sideview, power-adjustable glass, heated, power-folding with integrated blind spot mirrors

Wipers – Rain-sensing front windshield

Available Package

Trailer Tow Package includes Class I trailer hitch receiver, trailer wiring module, 4-pin connector and trailer sway control

Available Options

Mechanical

Engine block heater

Upfitter wiring harness

17" aluminum wheels with locking wheel lugs

17" premium Black-painted machined aluminum wheels

Interior

AM/FM stereo/single-CD player with SYNC, SiriusXM® Satellite Radio with 6-month All Access trial subscription, HD Radio™ Technology and rear view camera

MyFord Touch® with 6.5" color LCD touch screen, media hub and rear view camera – Includes AM/FM stereo/single-CD player, Navigation System, SiriusXM Traffic and Travel Link® with 5-year subscription, and HD Radio Technology

Cargo net kit – Vertical (divides seat from cargo area)

Flooring – All-weather floor mats (1st and 2nd rows)

Forward Sensing System

Key fobs (2 additional)

Overhead console – Aircraft-style, mid-vehicle (n/a with panoramic fixed-glass Vista Roof®)

Panoramic fixed-glass Vista Roof with power sunshade (includes roof rails; roof rails not included if roof rack is ordered)

Perimeter alarm

Remote Start System (includes perimeter alarm)

Reverse Sensing System (included with Forward Sensing System)

Smoker's Pack – Includes 1 ash cup

Exterior

BLIS® (Blind Spot Information System) with cross-traffic alert

Daytime running lamps

Ford Telematics™ powered by Telogis®² – Fleet-tracking system (includes 1 year of subscription service)

Quickclear™ electric windshield defroster – Includes power-adjustable, heated sideview mirrors

Roof rack with crossbars

Roof rails

Splash guards (front and rear)

Available Fleet-Only Option

3rd-row seats delete

¹Available feature. ²Ford Licensed Accessory.

EXTERIORS



Frozen White



Silver*



School Bus Yellow (Taxi Package)



Race Red



Deep Impact Blue*



Dark Blue



Tectonic Silver*



Solar*

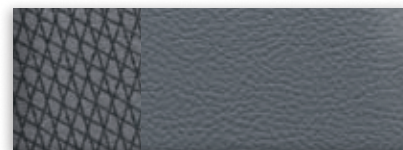


Magnetic*

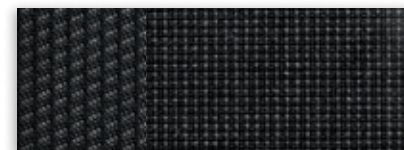


Shadow Black

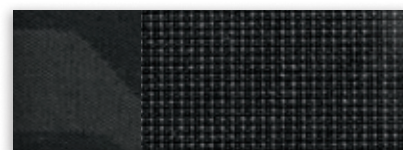
INTERIORS



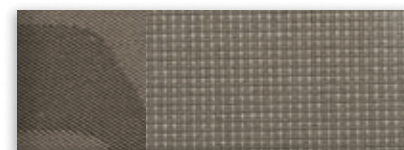
1 Pewter Vinyl



2 Charcoal Black Cloth



3 Charcoal Black Cloth



4 Medium Stone Cloth



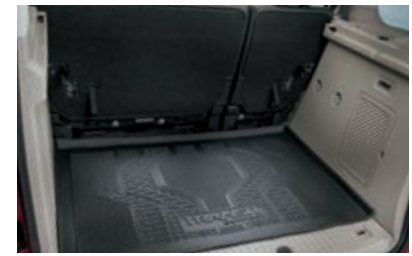
5 Medium Stone Leather¹

Exteriors	Interiors								
	XL		XLT			TITANIUM			
Frozen White	1	2	3	4	5	5			
Silver	1	2	3	4	5	5			
School Bus Yellow ²	1	2							
Race Red	1	2	3	4	5	5			
Deep Impact Blue ¹	1	2	3	4	5	5			
Dark Blue	1	2	3	4	5	5			
Tectonic Silver ¹	1	2	3	4	5	5			
Solar ¹	1	2	3	4	5	5			
Magnetic ¹	1	2	3	4	5	5			
Shadow Black ³	1	2	3	4	5	5			

¹Available only on Wagon. ²Available only on Wagon with Taxi Package. ³Late availability. Colors are representative only. See your dealer for actual paint/trim options.

*Metallic.





XLT Wagon (Long Wheelbase) in Tectonic Silver accessorized with Aeroskin™ hood protector by Lund®,¹ keyless entry keypad, side window deflectors, molded splash guards, and roof crossbars and cargo box by THULE®¹

XLT Van (Long Wheelbase) in Frozen White accessorized with Ford Commercial Graphics by 3M Original Wraps,¹ trailer towing accessories, side window deflectors, molded splash guards, and 16" aluminum wheels

Cargo area protector

Trailer hitch assembly

Remote Access

All-weather floor mats

Exterior

- Ford custom graphics¹
- Hood protector¹
- Racks and carriers¹
- Side window deflectors
- Splash guards
- Trailer towing accessories
- Aluminum wheels

Interior

- All-weather and premium carpeted floor mats
- Ash cup/coin holders
- Cargo organizers and protectors
- In-vehicle safe¹
- Interior light kit
- Interior rear window grilles
- Tablet cradle¹

Electronics

- Auto-dimming rearview mirror
- Ford Telematics™ powered by Telogis®¹
- Keyless entry keypad
- Remote Access
- Remote start systems
- Vehicle Security System
- Warning sensor systems¹



ford.com/transitconnect

Follow Ford:



New Vehicle Limited Warranty. We want your Ford Transit Connect ownership experience to be the best it can be. Under this warranty, your new vehicle comes with 3-year/36,000-mile bumper-to-bumper coverage, 5-year/60,000-mile Powertrain Warranty coverage, 5-year/60,000-mile safety restraint coverage, and 5-year/unlimited-mile corrosion (perforation) coverage – all with no deductible. Please ask your Ford Dealer for a copy of this limited warranty.

Roadside Assistance. Covers your vehicle for 5 years or 60,000 miles, so you have the security of knowing that help may be only a phone call away should you run out of fuel, lock yourself out of the vehicle or need towing. Your Ford Dealer can provide complete details on all of these advantages.

Ford Credit. Get the ride you want. Whether you plan to lease or finance, you'll find the choices that are right for you at Ford Credit. Ask your Ford Dealer for details or check us out at fordcredit.com.

Ford Extended Service Plan. For a purchase or lease, the Ford Extended Service Plan (ESP) gives you peace-of-mind protection designed to cover key vehicle components and protect you from the cost of unexpected repairs. Ask your dealer for a Ford ESP, the only service contract backed exclusively by Ford and honored at all Ford dealerships.

Insurance Services. Get Ford Motor Company quality in your auto insurance. Our program offers industry-leading benefits and competitive rates. Call 1-877-367-3847, or visit us at fordvip.com for a no-obligation quote. Insurance offered by American Road Services Company (in CA, American Road Insurance Agency), a licensed agency and subsidiary of Ford Motor Company.

Ford Original Accessories will be warranted for whichever provides you the greatest benefit: 24 months/unlimited mileage, or the remainder of your Bumper-to-Bumper 3-year/36,000-mile New Vehicle Limited Warranty. Ford Licensed Accessories (FLA) are warranted by the accessory manufacturer's warranty. FLA are designed and developed by the accessory manufacturer and have not been designed or tested to Ford Motor Company engineering requirements. Contact your Ford Dealer for details and/or a copy of all limited warranties.

Comparisons based on competitive models (class is Small Vans based on Ford segmentation), publicly available information and Ford certification data at time of release. Vehicles may be shown with optional equipment. Features may be offered only in combination with other options or subject to additional ordering requirements/limitations. Dimensions shown may vary due to optional features and/or production variability. Information is provided on an "as is" basis and could include technical, typographical or other errors. Ford makes no warranties, representations, or guarantees of any kind, express or implied, including but not limited to, accuracy, currency, or completeness, the operation of the information, materials, content, availability, and products. Ford reserves the right to change product specifications, pricing and equipment at any time without incurring obligations. Your Ford Dealer is the best source of the most up-to-date information on Ford vehicles.

HD Radio is a proprietary trademark of iBiquity Digital Corp. Masterack and SmartSpace are registered trademarks of Leggett & Platt Commercial Vehicle Products Company. Mr. Electric is a registered trademark of Mr. Electric LLC. Mr. Rooter is a registered trademark of Mr. Rooter LLC. SiriusXM services require a subscription, sold separately by SiriusXM after trial period. Fees and taxes apply. All fees and programming subject to change. Sirius satellite service is available only to those in the 48 contiguous USA, D.C. and PR (with coverage limitations). Our Internet radio service is available throughout our satellite service area and in AK and HI. Some channels not available in all lineups. Sirius, XM and all related marks and logos are trademarks of Sirius XM Radio Inc. The Bluetooth word mark is a trademark of the Bluetooth SIG, Inc. THULE is a registered trademark of Thule Sweden AB.



[Click here to learn more about your Transit Connect](#)