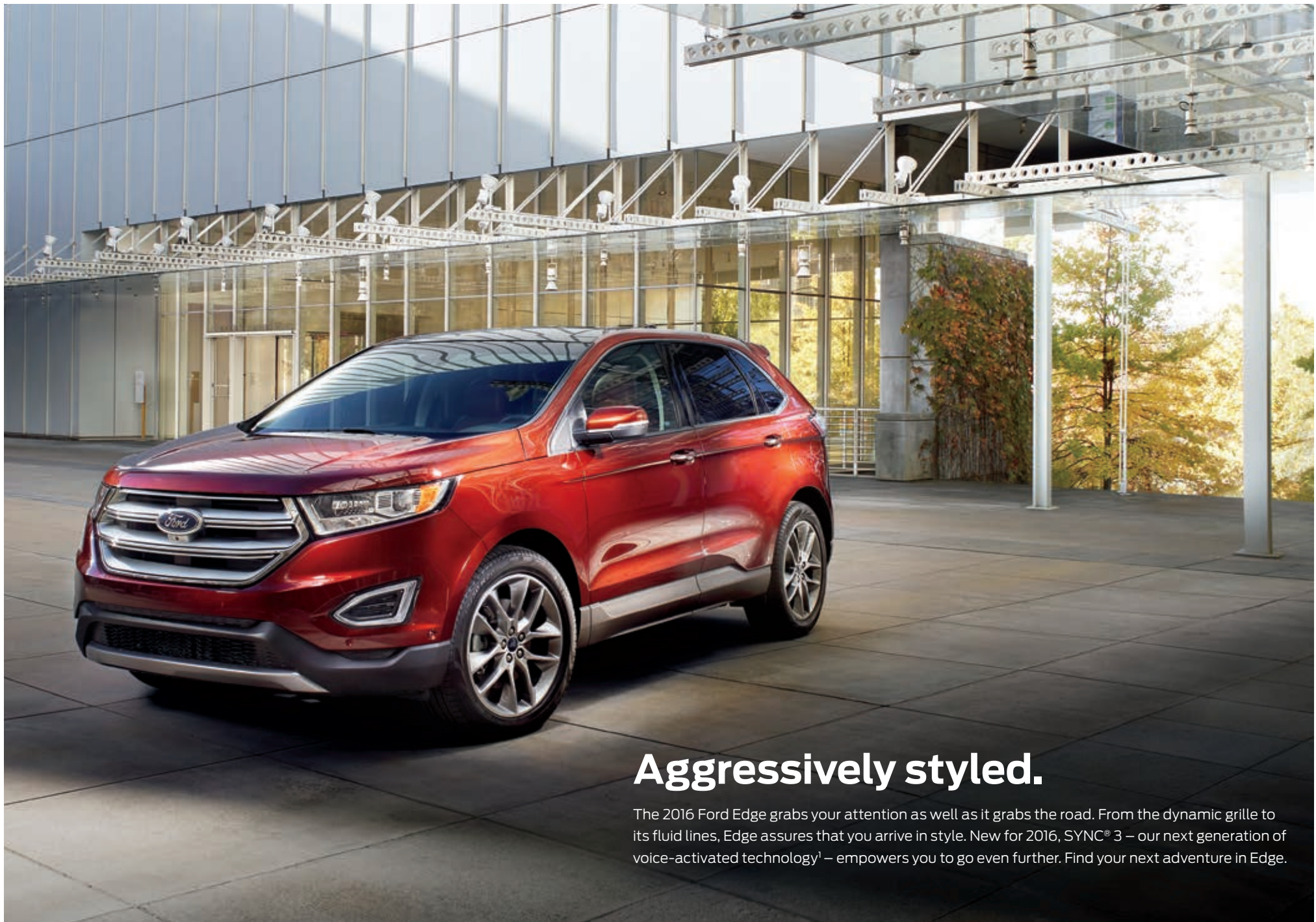


2016 | **EDGE**



Go Further





## Aggressively styled.

The 2016 Ford Edge grabs your attention as well as it grabs the road. From the dynamic grille to its fluid lines, Edge assures that you arrive in style. New for 2016, SYNC® 3 – our next generation of voice-activated technology<sup>1</sup> – empowers you to go even further. Find your next adventure in Edge.


*Titanium. Bronze Fire Metallic Tinted Clearcoat. Available equipment.*

<sup>1</sup>Available feature. Driving while distracted can result in loss of vehicle control. Only use SYNC/other devices, even with voice commands, when it is safe to do so. Some features may be locked out while the vehicle is in gear. Not all features are compatible with all phones. Message and data rates may apply.

2016 **EDGE**  
ford.com







## Openly driven.

Lively acceleration and passing performance come from a single turbocharged, twin-scroll direct-injection 2.0L EcoBoost® engine. This standard powerhouse produces 245 hp<sup>1</sup> and 275 lb.-ft. of low-end torque.<sup>1</sup>

**Get outstanding fuel efficiency** with Auto Start-Stop.<sup>2</sup> It shuts off the engine when you stop and restarts it as you release the brake. With this technology, Edge has an EPA-estimated rating of 21 city and 30 hwy mpg.<sup>3</sup> To be more aerodynamic and fuel efficient, EcoBoost models also feature Active Grille Shutters.

**Tow up to 3,500 lbs.<sup>4</sup>** with the 2.0L EcoBoost or the 280-hp 3.5L Ti-VCT V6<sup>5</sup> and the Class II Trailer Tow Package. Trailer sway control, included in the package, helps you maintain control of the vehicle and your trailer.<sup>6</sup>

**Embrace curves and corners** with the help of new electric power-assisted steering and Torque Vectoring Control.<sup>6</sup> These technologies help give Edge its responsive steering feel and enhance your hold on the road.



*SEL. Magnetic. Available equipment.*

<sup>1</sup>Tested with 93-octane fuel. <sup>2</sup>Available only on SE with FWD. <sup>3</sup>EPA-estimated rating of 21 city/30 hwy/24 combined mpg, 2.0L EcoBoost with Auto Start-Stop, FWD. Actual mileage will vary. <sup>4</sup>When properly equipped.

<sup>5</sup>Available feature. <sup>6</sup>Remember that even advanced technology cannot overcome the laws of physics. It's always possible to lose control of a vehicle due to inappropriate driver input for the conditions.

2016 **EDGE**  
ford.com







## Undeniably athletic.

SE. SEL. Titanium. Sport. The 2016 Edge lineup asserts its presence with a striking new stance. Luxurious accommodations for 5 are paired with a smooth, quiet ride and precise handling. Plus, sophisticated technologies<sup>1</sup> help enhance its prowess – and yours.

**Enjoy powerfully efficient performance** on Edge Sport, thanks to its twin-turbocharged, direct-injection 2.7L EcoBoost<sup>®</sup> engine. Equipped with this V6 engine, Edge has an EPA-estimated rating of up to 24 hwy mpg.<sup>2</sup> It also revs you up with best-in-class<sup>3</sup> gas V6 hp and torque. Plus, racing-style paddle shifters are included with the 6-speed SelectShift<sup>®</sup> automatic transmission on every Edge.

**Exceptional road-holding capability** is delivered by its 4-wheel independent suspension. Plus, Edge Sport backs its aggressive look with a uniquely sport-tuned suspension.

**Enhanced handling and maximized traction** are yours with all-wheel drive (AWD),<sup>1</sup> standard on Edge Sport this year. Every Edge also gets Curve Control, which helps reduce the vehicle's speed by up to 10 mph in approximately 1 second if it senses you're taking a curve too quickly.<sup>4</sup>



*Sport. Electric Spice. Available equipment.*

<sup>1</sup>Available feature. <sup>2</sup>EPA-estimated rating: 17 city/24 hwy/20 combined mpg, 2.7L EcoBoost, AWD. Actual mileage will vary. <sup>3</sup>Class is Midsize Utilities, non-diesel, based on Ford segmentation. <sup>4</sup>Remember that even advanced technology cannot overcome the laws of physics. It's always possible to lose control of a vehicle due to inappropriate driver input for the conditions. <sup>5</sup>Tested with 93-octane fuel.

2016 **EDGE**  
ford.com







## Smartly communicative.

**Voice-activated SYNC<sup>®1</sup> technology helps you keep your eyes on the road and hands on the wheel. SYNC. Say the word.<sup>®</sup>**

- **Hands-free calling** lets you make a call with a simple push of a button along with the sound of your voice.
- **Automatic phone book download** transfers the names and numbers in your compatible phone automatically, once paired.
- **Voice-activated music commands** let you say what music you want to hear and listen to it easily with voice-activated search, or say "Bluetooth<sup>®</sup> audio" to stream content from your phone.
- **SYNC AppLink<sup>™2</sup>** lets you control some of your favorite compatible mobile apps with your voice.
- **911 Assist<sup>®3</sup>** is a convenient no-charge feature that allows you to connect your compatible cell phone to help call 911 in the event of an accident.

**Upgrade to SYNC 3.<sup>1</sup> Our next generation of voice-activated technology with an easy-to-use new design and new features.**

- **New hardware meets new software** on the easy-to-read color touch screen that displays phone, audio and navigation<sup>4</sup> functions on the home screen.
- **High-speed performance** means you'll experience quick reactions to your commands. Plus, the capacitive touch screen includes a convenient swipe feature similar to your smartphone (as well as pinch-to-zoom capability within navigation<sup>4</sup>).
- **Enhanced voice recognition** lets you talk with simple, real-world voice commands and the system responds naturally to your voice.
- **Easy destination entry** feature within navigation<sup>4</sup> helps you locate your favorite restaurants, nearest ATM and more.
- **Siri<sup>®</sup> seamless integration** brings the power of Siri Eyes Free<sup>5</sup> and your iPhone<sup>®</sup> into your vehicle.
- **Automatic updates over Wi-Fi<sup>®6</sup>** let you keep SYNC 3 up-to-date with the latest software as new updates become available.

| SYNC

*Titanium. Ceramic leather trim with perforated inserts. SYNC 3. Available equipment.*

<sup>1</sup>Driving while distracted can result in loss of vehicle control. Only use SYNC/other devices, even with voice commands, when it is safe to do so. Some features may be locked out while the vehicle is in gear. Not all features are compatible with all phones. Message and data rates may apply. <sup>2</sup>SYNC AppLink is compatible with select smartphone platforms. Commands may vary by phone and AppLink software. <sup>3</sup>The vehicle's electrical system (including the battery), the wireless service provider's signal and a connected mobile phone must all be available and operating for 911 Assist to function properly. These systems may become damaged in a crash. The paired mobile phone must be connected to SYNC, and the 911 Assist feature enabled, in order for 911 to be dialed. When the feature is ON, 911 Assist uses your paired and connected mobile phone to assist occupants to contact emergency services by dialing 911 if your airbag deploys or, on certain vehicles, if the emergency fuel pump shut-off is activated. Aftermarket on-board diagnostic devices may interfere with various vehicle systems including Vehicle Health Report and 911 Assist. To avoid interference, remove the device or contact the device maker for more information on compatibility. <sup>4</sup>Available feature. <sup>5</sup>You must have a Bluetooth-enabled phone paired to your SYNC system. <sup>6</sup>Optional Navigation System map updates cannot be received via Wi-Fi and require a separate update.



2016 **EDGE**  
ford.com



## Exceptionally connected.

From its acoustically balanced sound system to its exceptional connectivity, the 2016 Ford Edge is designed to enhance your travels.

**Quality, comfort and capability** all come together here. Its finely crafted interior design offers you a heated steering wheel,<sup>1</sup> 10-way power heated and cooled front seats,<sup>1</sup> and up to 73.4 cu. ft. of cargo space with the rear 60/40 split seat folded flat.

**For amazing sound**, the 12-speaker Audio System from Sony<sup>®1</sup> is teamed with HD Radio<sup>™</sup> Technology.<sup>1</sup> By broadcasting a digital signal over traditional radio frequencies, HD Radio Technology gives you up to 3 additional channels – per FM station – of new, local content. It can also display the artist, song title, album name and more. All without the need for a subscription.

**SiriusXM<sup>®</sup> Satellite Radio<sup>1</sup>** welcomes you to the World of SiriusXM.<sup>2</sup> Enjoy more than 150 channels including commercial-free music, plus live sports, news and exclusive entertainment, with a 6-month trial subscription to the All Access package included with your new vehicle. You'll hear every channel available, plus you can listen online and on the SiriusXM app.<sup>2</sup>

**Navigation<sup>1</sup> with SiriusXM Traffic and Travel Link<sup>®</sup>** includes a 5-year complimentary SiriusXM Traffic and Travel Link<sup>2</sup> trial subscription. Global Positioning System (GPS) technology is combined with 3-D mapping and provides voice-guided turn-by-turn directions. With SiriusXM Traffic and Travel Link, you'll get detailed traffic information, plus current and forecasted weather, gas station locations and prices, sports scores and schedules, and movie theater locations with show listings and times.

**((SiriusXM<sup>®</sup>))**

*Titanium. Ceramic leather trim with perforated inserts. SYNC<sup>®</sup> 3. Available equipment.*



<sup>1</sup>Available feature. <sup>2</sup>SiriusXM Satellite Radio, SiriusXM Traffic and SiriusXM Travel Link subscriptions are sold separately or as a package by SiriusXM after your trial period, and are continuous until you call SiriusXM at 1-866-635-2349 to cancel. If you decide to continue service after your trial, the subscription plan you choose will automatically renew thereafter and you will be charged according to your chosen payment method at then-current rates. Fees and taxes apply. All fees and programming subject to change. See Customer Agreement for complete terms and more information at [www.siriusxm.com](http://www.siriusxm.com).

2016 **EDGE**  
[ford.com](http://ford.com)







## Confidently alert.

Busy city streets. Long trips on the highway. High-speed cruising and passing. The 2016 Edge offers advanced driver-assist technologies<sup>1</sup> to help you master these real-world challenges and many more.

**Maintain your lane** with help from our Lane-Keeping System<sup>1</sup>. It can detect lane markings with a forward-facing camera, and can send vibration pulses to the steering wheel and apply steering torque if needed, prompting you to steer back toward center.<sup>2</sup> There's also a Driver Alert System<sup>1</sup> that displays a coffee cup icon if it detects you could use a break.

**Get a heads-up** from adaptive cruise control and collision warning with brake support.<sup>1</sup> This system helps maintain your choice of 4 preset gaps from the vehicle in front of you and can alert you to a potential collision. If one is detected, it flashes a heads-up display warning on the windshield, sounds an alarm, and helps by pre-charging the brake system.

**Stay alert to traffic** detected in blind spots as you drive forward, or traffic nearing either side of the vehicle as you slowly back up, thanks to BLIS<sup>®</sup> (Blind Spot Information System) with cross-traffic alert.<sup>1</sup> BLIS helps warn you using lights embedded in the sideview mirrors.<sup>3</sup> Cross-traffic alert uses the same lights, plus an audio warning and a message center notice. Edge technology is all about empowering you.

**Make an informed approach** using the front 180-degree camera with washer.<sup>1</sup> Just press a button on the instrument panel to engage the front grille-mounted camera to help you see around corners, down alleys and even when you're pulling out of parking spots.



*Titanium. Too Good to Be Blue. Available equipment.*

<sup>1</sup>Available feature. Driver-assist features are supplemental and do not replace the driver's attention, judgment and need to control the vehicle.

<sup>2</sup>Lane-Keeping System does not control steering. <sup>3</sup>BLIS replaces standard integrated blind spot mirrors.

2016 **EDGE**  
ford.com





## Easily maneuvered. And powerfully uplifting.

Perpendicular. Parallel. Backing in. Heading out. The 2016 Edge offers advanced technologies<sup>1</sup> to ease you through all sorts of challenging situations. Enhanced active park assist with side parking sensors<sup>1</sup> helps you find a spot *and* steers the vehicle into place, while you control the gear shifter, and the brake and accelerator pedals. It can steer Edge out of tight parallel spots too. And alert you to obstacles near the sides of the vehicle along the way.

**New adaptive steering<sup>1</sup>** dynamically adjusts the steering response of the front wheels based on how fast the vehicle is moving. It helps make Edge even easier to steer at low speeds and more responsive at highway speeds.

**For easy access to the cargo area,** just kick your foot under the rear bumper with your Intelligent Access key fob tucked in a pocket or purse. The hands-free foot-activated liftgate<sup>2</sup> detects the motion of your leg and the proximity of the fob, then opens or closes on its own.

*Titanium. Ruby Red Metallic Tinted Clearcoat. Available equipment.*

<sup>1</sup>Available feature. Driver-assist features are supplemental and do not replace the driver's attention, judgment and need to control the vehicle. <sup>2</sup>Available feature.

2016 **EDGE**  
ford.com





# Edge Specifications



## Engines/EPA-Estimated Ratings<sup>1</sup> & Dimensions

### 2.0L EcoBoost®

245 hp @ 5,500 rpm<sup>2</sup>

275 lb.-ft. of torque @ 3,000 rpm<sup>2</sup>

6-speed SelectShift automatic

FWD 20 city/30 hwy/24 combined mpg

AWD 20 city/28 hwy/23 combined mpg

### 2.0L EcoBoost with Auto Start-Stop

245 hp @ 5,500 rpm<sup>2</sup>

275 lb.-ft. of torque @ 3,000 rpm<sup>2</sup>

6-speed SelectShift automatic

FWD 21 city/30 hwy/24 combined mpg

### 3.5L Ti-VCT V6

280 hp @ 6,500 rpm

250 lb.-ft. of torque @ 4,000 rpm

6-speed SelectShift automatic

FWD 18 city/26 hwy/21 combined mpg

AWD 17 city/25 hwy/20 combined mpg

### 2.7L EcoBoost V6

315 hp @ 4,750 rpm<sup>2</sup>

350 lb.-ft. of torque @ 2,750 rpm<sup>2</sup>

6-speed SelectShift automatic

AWD 17 city/24 hwy/20 combined mpg

### Exterior

|                           |        |
|---------------------------|--------|
| Wheelbase                 | 112.2" |
| Length                    | 188.1" |
| Height                    | 68.6"  |
| Width – Excluding mirrors | 75.9"  |
| Width – Including mirrors | 85.8"  |
| Width – Mirrors folded    | 78.4"  |
| Liftover height           | 29.7"  |

### Interior

|               |                    |
|---------------|--------------------|
|               | Front/Rear         |
| Head room     | 40.2"/40.3"        |
| Shoulder room | 60.3"/60.5"        |
| Hip room      | 55.9"/57.5"        |
| Leg room      | 42.6" (max.)/40.6" |

### Capacities (cu. ft.)

|                                 |           |
|---------------------------------|-----------|
| Passenger volume                | 113.9     |
| Cargo volume behind front seats | 73.4      |
| Cargo volume behind rear seats  | 39.2      |
| Fuel tank (gal.)                |           |
| FWD/AWD                         | 18.4/18.5 |

## Standard Features

### Mechanical

|  |
|--|
| 6-speed SelectShift® automatic transmission with paddle activation |
| 4-wheel independent suspension                                     |
| Electric power-assisted steering                                   |
| Front-wheel drive (FWD)  |
| Hill start assist  |
| Power disc brakes with Anti-Lock Brake System (ABS)                |
| Torque Vectoring Control   |

### Seating

|   |
|---|
| Front bucket seats with 4-way adjustable head restraints  |
| Rear 60/40 split fold-flat seat with manually reclining seat backs and folding center armrest with 2 cupholders |

### Interior

|  |
|--|
| 12-volt powerpoints (2 in 1st row, 1 in 2nd row and 1 in rear cargo area)            |
| Acoustic-laminate windshield   |
| Adjustable driver and front-passenger sun visors with illuminated vanity mirrors     |
| Air conditioning   |
| Below-floor Cargo Management System  |
| Cargo area tie-downs and hooks   |
| Cargo net  |
| Center console with storage tray, armrest, powerpoint and 2 cupholders               |
| Coat hooks (2)   |
| Compass and outside temperature displays   |
| Cupholders/beverage holders (8)  |
| Front-passenger (1) and B-pillar (2) assist handles                                  |
| Intelligent Access with push-button start  |
| Leather-wrapped shift knob   |
| Manual tilt/telescoping steering column  |
| Map pockets in driver and front-passenger seat backs                                 |
| Overhead console with sunglasses holder  |
| Power door locks   |
| Power windows with one-touch-up/-down feature for driver and front-passenger windows |
| Rear-window defroster  |
| Steering wheel-mounted cruise, audio and 5-way controls (2)                          |

### Exterior

|   |
|---|
| Automatic headlamps with wiper activation   |
| Body-color rear spoiler   |
| Configurable LED daytime running lamps  |
| Dual bright exhaust tips  |
| Easy Fuel® capless fuel filler  |
| LED taillamps   |
| Power sideview mirrors with integrated blind spot mirrors and manual fold-away design         |
| Privacy glass (rear doors, rear quarter windows and liftgate window)                          |
| Quad-beam halogen headlamps   |
| Wipers – Front: speed-sensitive, variable-intermittent with washer; rear: 2-speed with washer |

### Safety & Security

|  |
|--|
| Personal Safety System™ for driver and front passenger includes dual-stage front airbags, <sup>3</sup> safety belt pretensioners, safety belt energy-management retractors, safety belt usage sensors, driver's seat position sensor, crash severity sensor, restraint control module and Front-Passenger Sensing System |
| AdvanceTrac® with RSC® (Roll Stability Control™) and Curve Control   |
| Battery saver with headlamps-off delay   |
| Belt-Minder® front safety belt reminder  |
| Child-safety rear door locks   |
| Driver's knee airbag <sup>3</sup>  |
| Front height-adjustable shoulder safety belts  |
| Front-seat side airbags <sup>3</sup>   |
| Glove-box-door-integrated knee airbag <sup>3</sup>   |
| LATCH – Lower Anchors and Tether Anchors for Children (2 in rear outboard seating positions)   |
| MyKey®   |
| Rear view camera   |
| Safety Canopy® System with side-curtain airbags <sup>3</sup> and rollover sensor   |
| SecuriLock® Passive Anti-Theft System  |
| SOS Post-Crash Alert System™   |
| Tire Pressure Monitoring System (excludes spare)   |

Dimensions may vary by trim level.

<sup>1</sup>Actual mileage will vary. <sup>2</sup>Tested with 93-octane fuel. <sup>3</sup>Always wear your safety belt and secure children in the rear seat.

2016 **EDGE**  
ford.com







SEL. Magnetic. Available equipment.

SEL. 73.4-cu.-ft. rear cargo area. Available equipment.

SEL. Panoramic Vista Roof.<sup>1</sup>

## SE

**Equipment Group 100A**  
Includes all standard features, plus:

### Mechanical

2.0L EcoBoost® engine with Active Grille Shutters and Auto Start-Stop (Auto Start-Stop n/a with AWD)

### Seating

6-way manual driver's seat  
4-way manual front-passenger seat  
Cloth seats

### Interior

AM/FM stereo/single-CD player with MP3 capability and 6 speakers  
Dark Ano Gray instrument panel appliqué  
Dark Slate Metallic center stack finish  
Front and rear carpeted floor mats  
SYNC® Enhanced Voice Recognition Communications and Entertainment System with 4.2" color LCD screen in center stack, AppLink™ 911 Assist®, and media hub with smart-charging USB port

### Exterior

18" Sparkle Silver-painted aluminum wheels with P245/60R18 all-season BSW tires  
Black sideview mirrors  
Body-color door handles  
Bright grille

### Available Options & Package

2nd-row outboard inflatable safety belts  
All-wheel drive (AWD)  
Black roof-rack side rails  
**Cargo Accessories Package** includes interior cargo cover, cargo area protector and rear bumper protector  
Dual Headrest DVD by INVISION™<sup>2</sup>  
Front and rear all-weather floor mats  
Locking wheel lug nuts  
P235/60R18 all-season snow chain-compatible tires

## SEL

**Equipment Group 200A**  
Includes select SE features, plus:

### Mechanical

2.0L EcoBoost engine with Active Grille Shutters

### Seating

10-way power driver's seat  
6-way power front-passenger seat  
EasyFold® rear seat back release  
Unique cloth seats

### Interior

Auto-dimming rearview mirror  
Dual-zone electronic automatic temperature control  
Leather-wrapped steering wheel  
Pewter-appearance instrument panel appliqué  
Satin Twilight accents  
SiriusXM® Satellite Radio with 6-month All Access trial subscription

### Exterior

18" Sparkle Silver-painted split-spoke aluminum wheels with P245/60R18 all-season BSW tires  
Body-color, heated sideview mirrors with security approach lamps and integrated LED turn signal indicators  
Bright beltline moldings  
LED signature lamps  
Reverse Sensing System  
SecuriCode™ invisible keypad

### Available Equipment Group

**Equipment Group 201A** – SYNC 3 Enhanced Voice Recognition Communications and Entertainment System with 8" color LCD touch screen in center stack with swiping capability, 911 Assist, AppLink and 2 smart-charging USB ports + leather-trimmed, heated front seats + Premium Audio System with 9 speakers

### Available Options & Packages

3.5L Ti-VCT V6 engine  
18" polished aluminum wheels (requires 201A)  
2nd-row outboard inflatable safety belts  
All-wheel drive (AWD)  
Black roof-rack side rails (n/a with Vista Roof®)  
**Cargo Accessories Package** includes interior cargo cover, cargo area protector and rear bumper protector  
**Class II Trailer Tow Package** includes trailer sway control  
**Cold Weather Package** includes heated steering wheel, and front and rear all-weather floor mats (requires 201A)  
Dual Headrest DVD by INVISION™<sup>2</sup>  
Front and rear all-weather floor mats  
Locking wheel lug nuts  
P235/60R18 all-season snow chain-compatible tires  
Panoramic Vista Roof (requires 201A)  
**Technology Package** includes voice-activated Navigation System with pinch-to-zoom capability, and integrated SiriusXM Traffic and Travel Link® with 5-year trial subscription, BLIS® (Blind Spot Information System) with cross-traffic alert, Remote Start System, auto-dimming driver's sideview mirror, and 110-volt power outlet (requires 201A)  
**Utility Package** includes hands-free foot-activated liftgate, perimeter alarm, and universal garage door opener (requires 201A)



18" Sparkle Silver-Painted Aluminum  
Standard: SE



18" Sparkle Silver-Painted Split-Spoke Aluminum  
Standard: SEL



18" Polished Aluminum  
Available: SEL

<sup>1</sup>Available feature. <sup>2</sup>Ford Licensed Accessory.



# Titanium

## Equipment Group 300A

*Includes select SEL features, plus:*

### Seating

10-way power driver and front-passenger seats with driver's memory feature

Heated front sport-style bucket seats

Leather-trimmed seats

### Interior

Acoustic-laminate front-door glass

Ambient lighting

Audio System from Sony® with 12 speakers and HD Radio™ Technology

Illuminated front door-sill plates

Mechanical Stripe aluminum instrument panel appliqué

Metal-plated accents

SYNC® 3 Enhanced Voice Recognition Communications and Entertainment System with 8" color LCD touch screen in center stack with swiping capability, 911 Assist® AppLink™ and 2 smart-charging USB ports

Universal garage door opener

### Exterior

19" premium Luster Nickel-painted aluminum wheels with P245/55R19 all-season BSW tires

Body-color door handles with bright inserts

Body-color, heated sideview mirrors with integrated LED turn signal indicators, security approach lamps and memory feature

Hands-free foot-activated liftgate

LED taillamps with light bar

Perimeter alarm

## Available Equipment Groups

### Equipment Group 301A – Technology Package

includes voice-activated Navigation System with pinch-to-zoom capability, and integrated SiriusXM® Traffic and Travel Link® with 5-year trial subscription, BLIS® (Blind Spot Information System) with cross-traffic alert, Remote Start System, auto-dimming driver's sideview mirror, and 110-volt power outlet + perforated leather-trimmed seats + heated and cooled front seats + heated rear outboard seats + panoramic Vista Roof®

**Equipment Group 302A** – Includes all content of 301A + Lane-Keeping System + enhanced active park assist with side parking sensors + front 180-degree camera with washer + HID headlamps with auto high beams + rain-sensing windshield wipers + 2nd-row outboard inflatable safety belts

## Available Options & Packages

3.5L Ti-VCT V6 engine

20" polished aluminum wheels with Dark Stainless-painted pockets

2nd-row outboard inflatable safety belts (included on 302A)

All-wheel drive (AWD)

**Cargo Accessories Package** includes interior cargo cover, cargo area protector and rear bumper protector

**Class II Trailer Tow Package** includes trailer sway control

**Cold Weather Package** includes heated steering wheel, and front and rear all-weather floor mats

**Driver's Package** includes adaptive cruise control and collision warning with brake support, adaptive steering and power-tilt/-telescoping steering column (requires 301A or 302A)

Dual Headrest DVD by INVISION™<sup>1</sup>

Front and rear all-weather floor mats

Locking wheel lug nuts

P235/60R18 all-season snow chain-compatible tires (requires and only available with 18" polished aluminum wheels)

Panoramic Vista Roof (included on 301A and 302A)

Silver roof-rack side rails (300A only; n/a with Vista Roof)

**Technology Package** includes voice-activated Navigation System with pinch-to-zoom capability, and integrated SiriusXM Traffic and Travel Link with 5-year trial subscription, BLIS (Blind Spot Information System) with cross-traffic alert, Remote Start System, auto-dimming driver's sideview mirror, and 110-volt power outlet (included on 301A and 302A)



*Bronze Fire Metallic Tinted Clearcoat. Available equipment.*

*2nd-row outboard inflatable safety belts.<sup>2</sup> Ceramic leather trim. Available equipment.*

*39.2 cu. ft. of cargo space behind 2nd row.*

*HID headlamps with auto high beams.<sup>2</sup>*

*LED taillamps with light bar.*



18" Polished Aluminum  
Available (requires  
snow chain-compatible tires)



19" Premium Luster Nickel-  
Painted Aluminum  
Standard



20" Polished Aluminum with  
Dark Stainless-Painted Pockets  
Available

<sup>1</sup>Ford Licensed Accessory. <sup>2</sup>Available feature.





*Electric Spice. Available equipment.*

*Unique Sport door-trim inserts.*

*2.7L EcoBoost V6, twin-turbocharged, direct-injection engine.*

*Aluminum brake and accelerator pedal covers.*

*Trapezoidal fascia-integrated dual bright exhaust outlets.*



20" Polished Aluminum with Low-Gloss Magnetic-Painted Pockets  
Standard



21" Premium Tarnished Dark-Painted Aluminum  
Available

## Sport

### Equipment Group 400A

*Includes select SEL features, plus:*

#### Mechanical

2.7L EcoBoost® V6 engine with Active Grille Shutters

All-wheel drive (AWD)

Sport-tuned suspension

#### Seating

10-way power, heated driver and front-passenger seats with driver's memory feature

Leather-trimmed seats with perforated sueded cloth inserts

#### Interior

Acoustic-laminate front-door glass

Aluminum brake and accelerator pedal covers

Ambient lighting

Audio System from Sony® with 12 speakers and HD Radio™ Technology

Brush weave aluminum instrument panel appliqué

Deluxe front and rear carpeted floor mats

Illuminated front door-sill scuff plates

Metal-plated accents

Power-tilt/-telescoping steering column

SYNC® 3 Enhanced Voice Recognition Communications and Entertainment System with 8" color LCD touch screen in center stack with swiping capability, 911 Assist®, AppLink™ and 2 smart-charging USB ports

Universal garage door opener

#### Exterior

20" polished aluminum wheels with low-gloss Magnetic-painted pockets and P245/50R20 all-season BSW tires

Black beltline moldings

Body-color cladding

Body-color front and rear bumpers

Body-color, heated sideview mirrors with integrated LED turn signal indicators, security approach lamps and memory feature

Dual bright exhaust outlets integrated into rear trapezoidal fascia

Hands-free foot-activated liftgate

LED taillamps with light bar

Perimeter alarm

Piano Black grille with Magnetic accents

Unique body-color front and rear lower fascias

Unique headlamp treatment

### Available Equipment Group

#### Equipment Group 401A – Technology Package

includes voice-activated Navigation System with pinch-to-zoom capability, and integrated SiriusXM® Traffic and Travel Link® with 5-year trial subscription, BLIS® (Blind Spot Information System) with cross-traffic alert, Remote Start System, auto-dimming driver's sideview mirror, and 110-volt power outlet + Lane-Keeping System + enhanced active park assist with side parking sensors + front 180-degree camera with washer + HID headlamps with auto high beams + rain-sensing windshield wipers + heated and cooled front seats + heated rear outboard seats

#### Available Options & Packages

21" premium Tarnished Dark-painted aluminum wheels

2nd-row outboard inflatable safety belts

Adaptive cruise control and collision warning with brake support

**Cargo Accessories Package** includes interior cargo cover, cargo area protector and rear bumper protector

**Cold Weather Package** includes heated steering wheel, and front and rear all-weather floor mats

Dual Headrest DVD by INVISION™<sup>1</sup>

Front and rear all-weather floor mats

Locking wheel lug nuts

Panoramic Vista Roof®

Remote Start System (included on 401A)

Summer-only performance tires<sup>2</sup> (requires 21" wheels)

**Technology Package** includes voice-activated Navigation System with pinch-to-zoom capability, and integrated SiriusXM Traffic and Travel Link with 5-year trial subscription, BLIS (Blind Spot Information System) with cross-traffic alert, Remote Start System, auto-dimming driver's sideview mirror, and 110-volt power outlet (included with 401A)

<sup>1</sup>Ford Licensed Accessory. <sup>2</sup>Ford does not recommend using summer tires when temperatures drop to approximately 45°F or below (depending on tire wear and environmental conditions) or in snow/ice conditions. If the vehicle must be driven in these conditions, Ford recommends using all-season or snow tires.



Exteriors



White Platinum Metallic Tri-coat



Oxford White



Ingot Silver\*



Ruby Red Metallic Tinted Clearcoat



Bronze Fire Metallic Tinted Clearcoat



Too Good to Be Blue\*



Kona Blue\*



Electric Spice\*



Magnetic\*



Shadow Black

\*Metallic.

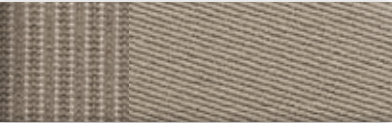
Interiors



1 Dune Cloth



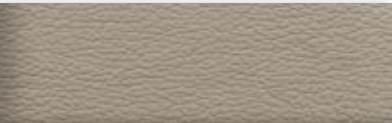
2 Ebony Cloth



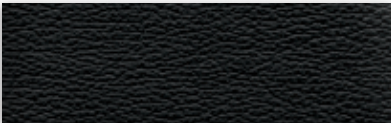
3 Unique Dune Cloth



4 Unique Ebony Cloth



5 Dune Leather



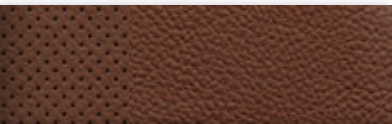
6 Ebony Leather



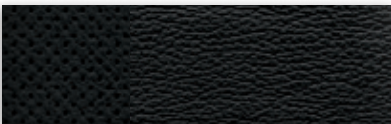
7 Ceramic Leather



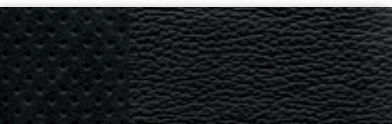
8 Ceramic Leather with Perforated Inserts



9 Cognac Leather with Perforated Inserts



10 Ebony Leather with Perforated Inserts



11 Ebony Leather with Perforated Sueded Cloth Inserts

| Exteriors  | SE |   | Interiors |   |   |   | Titanium |   |   |    |    | Sport |
|--|----|---|-----------|---|---|---|----------|---|---|----|----|-------|
|  |    |   | SEL       |   |   |   | 6        | 7 | 8 | 9  | 10 |       |
| White Platinum Metallic Tri-coat <sup>1</sup>      |    |   | 3         | 4 | 5 | 6 |          |   |   |    |    |       |
| Oxford White                                       |    |   | 3         | 4 | 5 | 6 |          |   |   |    |    |       |
| Ingot Silver                                       | 1  | 2 | 3         | 4 | 5 | 6 | 6        | 7 | 8 | 9  | 10 | 11    |
| Ruby Red Metallic Tinted Clearcoat <sup>1</sup>    |    |   | 3         | 4 | 5 | 6 | 6        | 7 | 8 | 10 |    | 11    |
| Bronze Fire Metallic Tinted Clearcoat <sup>1</sup> |    |   | 3         | 4 | 5 | 6 | 6        | 7 | 8 | 9  | 10 | 11    |
| Too Good to Be Blue                                | 1  | 2 | 3         | 4 | 5 | 6 | 6        | 7 | 8 | 10 |    | 11    |
| Kona Blue  | 1  | 2 | 3         | 4 | 5 | 6 | 6        | 7 | 8 | 9  | 10 | 11    |
| Electric Spice                                     |    |   | 4         | 6 |   |   | 6        | 7 | 8 | 10 |    | 11    |
| Magnetic   | 1  | 2 | 3         | 4 | 5 | 6 | 6        | 7 | 8 | 9  | 10 |       |
| Tuxedo Black                                       | 1  | 2 | 3         | 4 | 5 | 6 | 6        | 7 | 8 | 9  | 10 | 11    |

5, 6 Requires 201A on SEL 8, 9, 10 Requires 301A or 302A

<sup>1</sup>Additional charge.  
Colors are representative only. See your dealer for actual paint/trim options.





*SE in Magnetic accessorized with smoked side window deflectors, Aeroskin™ hood protector by Lund®<sup>1</sup> front and rear molded splash guards, keyless entry keypad, roof rails, and roof-mounted crossbars and cargo box by THULE®<sup>1,2</sup>*

*Remote Access*

*All-weather floor mats*

*Dual Headrest DVD by INVISION™<sup>1</sup>*

*Cargo area protector, interior cargo cover and rear bumper protector*

#### **Exterior**

Full vehicle cover<sup>1</sup>  
Hood protector<sup>1</sup>  
Racks and carriers<sup>1,2</sup>  
Rear bumper protector  
Side window deflectors  
Splash guards  
Sportz® tent<sup>1</sup>  
Trailer towing accessories  
Wheel lock kit

#### **Interior**

All-weather and premium carpeted floor mats  
Ash cup/coin holders  
Auto-dimming rearview mirror  
Cargo organizers and protectors  
First aid and roadside assistance kits<sup>1</sup>  
In-vehicle safe<sup>1</sup>  
Interior light kit  
Leather-trimmed interior seating<sup>1</sup>  
Tablet cradle<sup>1</sup>

#### **Electronics**

Dual headrest DVD<sup>1</sup>  
Keyless entry keypad  
Remote Access  
Remote start systems  
Vehicle Security System  
Warning sensor systems<sup>1</sup>



**FORD ACCESSORIES**

[accessories.ford.com](http://accessories.ford.com)

<sup>1</sup>Ford Licensed Accessory. <sup>2</sup>Consult owner's manual for details on roof rack weight limits.





Go Further

[ford.com](http://ford.com)

Follow Ford:



**New Vehicle Limited Warranty.** We want your Ford Edge ownership experience to be the best it can be. Under this warranty, your new vehicle comes with 3-year/36,000-mile bumper-to-bumper coverage, 5-year/60,000-mile Powertrain Warranty coverage, 5-year/60,000-mile safety restraint coverage, and 5-year/unlimited-mile corrosion (perforation) coverage – all with no deductible. Please ask your Ford Dealer for a copy of this limited warranty.

**Roadside Assistance.** Covers your vehicle for 5 years or 60,000 miles, so you have the security of knowing that help may be only a phone call away should you run out of fuel, lock yourself out of the vehicle or need towing. Your Ford Dealer can provide complete details on all of these advantages.

**Ford Credit.** Get the ride you want. Whether you plan to lease or finance, you'll find the choices that are right for you at Ford Credit. Ask your Ford Dealer for details or check us out at [fordcredit.com](http://fordcredit.com).

**Ford Extended Service Plan.** For a purchase or lease, the Ford Extended Service Plan (ESP) gives you peace-of-mind protection designed to cover key vehicle components and protect you from the cost of unexpected repairs. Ask your dealer for a Ford ESP, the only service contract backed exclusively by Ford and honored at all Ford Lincoln dealerships.

**Insurance Services.** Get Ford Motor Company quality in your auto insurance. Our program offers industry-leading benefits and competitive rates. Call 1-877-367-3847, or visit us at [fordvip.com](http://fordvip.com) for a no-obligation quote. Insurance offered by American Road Services Company (in CA, American Road Insurance Agency), a licensed agency and subsidiary of Ford Motor Company.

**Ford Original Accessories** will be warranted for whichever provides you the greatest benefit: 24 months/unlimited mileage, or the remainder of your Bumper-to-Bumper 3-year/36,000-mile New Vehicle Limited Warranty. Ford Licensed Accessories (FLA) are warranted by the accessory manufacturer's warranty. FLA are designed and developed by the accessory manufacturer and have not been designed or tested to Ford Motor Company engineering requirements. Contact your Ford Dealer for details and/or a copy of all limited warranties.

Comparisons based on competitive models (class is Midsize Utilities based on Ford segmentation), publicly available information and Ford certification data at time of release. Vehicles may be shown with optional equipment. Features may be offered only in combination with other options or subject to additional ordering requirements/limitations. Dimensions shown may vary due to optional features and/or production variability. Information is provided on an "as is" basis and could include technical, typographical or other errors. Ford makes no warranties, representations, or guarantees of any kind, express or implied, including but not limited to, accuracy, currency, or completeness, the operation of the information, materials, content, availability, and products. Ford reserves the right to change product specifications, pricing and equipment at any time without incurring obligations. Your Ford Dealer is the best source of the most up-to-date information on Ford vehicles.

HD Radio is a proprietary trademark of iBiquity Digital Corp. INVISON is a trademark of VOXX International Corporation. iPhone and Siri are trademarks of Apple Inc., registered in the U.S. and other countries. SiriusXM services require a subscription, sold separately by SiriusXM after trial period. Fees and taxes apply. All fees and programming subject to change. Sirius satellite service is available only to those in the 48 contiguous USA, D.C. and PR (with coverage limitations). Our Internet radio service is available throughout our satellite service area and in AK and HI. Some channels not available in all lineups. Sirius, XM and all related marks and logos are trademarks of Sirius XM Radio Inc. Sony is a registered trademark of the Sony Corporation. The Bluetooth word mark is a trademark of the Bluetooth SIG, Inc. THULE is a registered trademark of Thule Sweden AB. Wi-Fi® is a registered trademark of the Wi-Fi Alliance®.



Click here to learn more  
about your Edge