

2018

SUPER DUTY CHASSIS CAB



SPECIFICATIONS

X L



X L T



L A R I A T



M O D E L S

F-350

Maximum Capabilities¹
 5th-Wheel Towing: 24,500 lbs.
 Conventional Towing: 17,500 lbs.
 Payload: 7,940 lbs.
 GCWR: 32,000 lbs.
 GVWR: 14,000 lbs.
 Front GAWR: 5,250 lbs. (4x2); 6,000 lbs. (4x4)

Equipment Configurations

Engines: 6.2L Gas V8 Flex Fuel E85-capable
 6.7L Power Stroke® V8 Turbo Diesel B20-capable
 Drivelines: 4x2 or 4x4 · Single Rear Wheel or Dual Rear Wheel
 Bodies: Regular Cab, SuperCab, Crew Cab
 Trim Series: XL, XLT, LARIAT

F-450

Maximum Capabilities¹
 5th-Wheel Towing: 26,400 lbs.
 Conventional Towing: 17,500 lbs.
 Payload: 9,850 lbs.
 GCWR: 34,500 lbs.
 GVWR: 16,500 lbs.
 Front GAWR: 7,500 lbs.

Equipment Configurations

Engines: 6.8L Triton® Gas V10
 6.7L Power Stroke V8 Turbo Diesel B20-capable
 Drivelines: 4x2 or 4x4 · Dual Rear Wheel only
 Bodies: Regular Cab, SuperCab, Crew Cab
 Trim Series: XL, XLT, LARIAT

F-550

Maximum Capabilities¹
 5th-Wheel Towing: 31,900 lbs.
 Conventional Towing: 18,500 lbs.
 Payload: 12,750 lbs.
 GCWR: 40,000 lbs.
 GVWR: 19,500 lbs.
 Front GAWR: 7,500 lbs.

Equipment Configurations

Engines: 6.8L Triton Gas V10
 6.7L Power Stroke V8 Turbo Diesel B20-capable
 Drivelines: 4x2 or 4x4 · Dual Rear Wheel only
 Bodies: Regular Cab, SuperCab, Crew Cab
 Trim Series: XL, XLT, LARIAT



Regular Cab
 Available: XL, XLT



SuperCab
 Available: XL, XLT, LARIAT



Crew Cab
 Available: XL, XLT, LARIAT



40/20/40 split front seat
 Standard: XL, XLT
 Optional: LARIAT



40/mini-console/40 front bucket seats
 Optional: XL



40/console/40 front bucket seats
 Standard: LARIAT
 Optional: XLT

¹When properly configured.



STANDARD FEATURES

Mechanical

Axle – Front, narrow-track, monobeam (F-350 4x4)
Axle – Front, narrow-track, Twin-I-Beam (F-350 4x2)
Axle – Front, wide-track, monobeam (F-450/F-550)
Front and rear stabilizer bars
Hydraulic power-assisted steering
Manual locking hubs (4x4)
Oil monitor – Intelligent Oil-Life Monitor® (diesel engine)
Oil monitor – Oil-life minder (gas engines)
Power 4-wheel disc brakes with Anti-Lock Brake System (ABS)
Stationary Elevated Idle Control (SEIC) ¹
Steering damper
Suspension – Front, coil springs
Suspension – Heavy-duty gas shock absorbers
Suspension – Rear, auxiliary springs
Trailer sway control
Trailer wiring – 7-wire harness with relays, blunt cut and labeled

Interior

12V powerpoints (2 in instrument panel)
Air conditioning
Cabin air filter
Coat hooks
Dash-top tray
Driver and front-passenger grab handles, and rear-passenger on Crew Cab
Illuminated and lockable glove boxes (2)
Lighting – Dome light
Lighting – Dual map lights (front on Regular Cab/SuperCab; front and rear on Crew Cab)
Manual-tilt/-telescoping steering column
Outside temperature display
Overhead console with dual storage bins
Upfitter switches located in overhead console (four 25-amp and two 40-amp; 40-amp are hot-at-all-times capable)

Exterior

Configurable daytime running lamps
Doors – 2 (Regular Cab)
Doors – 4 (SuperCab/Crew Cab)
Front fender vents
Front license plate bracket
Front splash guards (F-450/F-550)
Front tow hooks (2)
Lighting – 3-blink lane change signal
Lighting – LED roof marker/clearance lamps
Quad-beam jewel-effect halogen headlamps
Underhood service lamp
Variable-intermittent windshield wipers with washers

Driver-Assist Technology

Autolamp automatic on/off headlamps with rainlamp
Hill start assist

Safety & Security

Airbags – Driver and right-front-passenger front and front-seat side airbags ²
Front-passenger airbag deactivation switch (Regular Cab and SuperCab)
Safety Canopy® System with side-curtain airbags ² and rollover sensor
AdvanceTrac® with RSC® (Roll Stability Control™)
Belt-Minder® front safety belt reminder
Child-safety-seat top tether anchors (Regular Cab front-passenger, and all rear-seat positions)
Front height-adjustable shoulder safety belts
Individual Tire Pressure Monitoring System (F-350, excludes available spare)
SOS Post-Crash Alert System™

POWER TRAINS

	6.7L Power Stroke V8 Turbo Diesel	6.2L 2-Valve Gas V8 FFV	6.8L Triton 3-Valve Gas V10
Configuration	OHV (32-valve)	SOHC	SOHC
Fuel injection	High-pressure common-rail	Sequential electronic	Sequential electronic
Induction system	Single-sequential turbocharger; charged air cooler	Specially tuned	Specially tuned
Cooling system	Pressurized series flow	Pressurized series flow	Pressurized series flow
Block material	Compacted graphite iron	Cast iron	Cast iron
Valve operation	Push rod/rocker arms	Roller-rocker shafts	Hydraulic roller
Camshaft drive	Gear	Silent chain	Silent chain
Bore/stroke	3.90"/4.25"	4.02"/3.74"	3.55"/4.17"
Compression ratio	16.2:1	9.8:1	9.2:1
Horsepower @ rpm	330 @ 2,600	385 @ 5,750 ³	288 @ 4,000 ³
Torque lb.-ft. @ rpm	750 @ 2,000	430 @ 3,800	424 @ 3,000
Recommended fuel	Ultra-low-sulfur diesel or B20 (containing 20% or less biodiesel)	Regular unleaded or E85	Regular unleaded
Transmission	TorqShift® 6-speed SelectShift® automatic with tow/haul mode	TorqShift 6-speed SelectShift automatic with tow/haul mode	TorqShift 6-speed SelectShift automatic with tow/haul mode
Standard availability	F-450/F-550: LARIAT	F-350: XL, XLT, LARIAT	F-450/F-550: XL, XLT
Optional availability	F-350: XL, XLT, LARIAT F-450/F-550: XL, XLT		

FRAMES

Number of Crossmembers

7 (145.3" WB);
8 (167.9" WB, 169.3" WB, 179.8" WB);
9 (191.9" WB, 193.3" WB, 203.8" WB);
10 (205.3" WB)

Section Modulus⁴

12.7 cu. in.

Frame Rail Yield Strength

50,000 psi

Max. Side Rail Section⁵

(height x width x thickness)

7.50" x 2.74" x 0.28" (F-350)
7.50" x 2.74" x 0.32" (F-450/F-550 145.3" WB, 169.3" WB, 167.9" WB, 179.8" WB and 203.8" WB)
7.50" x 2.74" x 0.60" (F-450/F-550 169.3" WB, 191.9" WB, 193.3" WB and 205.3" WB; F-550 with the Payload Plus Upgrade Package)

MECHANICAL

Front Suspension

Axle (max. rating @ ground) – 5,250 lbs. (F-350 4x2); 6,000 lbs. (F-350 4x4); 7,000 lbs. (F-450/F-550)
Shock absorbers – 1.38" gas type

Rear Suspension

Axle (max. rating @ ground) – 7,230 lbs. (F-350 SRW); 10,040 lbs. (F-350 DRW); 13,660 lbs. (F-450); 13,660 lbs. (F-550)
Shock absorbers – 1.38" gas type

Brakes

Rotor diameter (front/rear) – 14.29"/14.29" (F-350); 15.39"/15.74" (F-450/F-550)
Lining area (sq. in.; front/rear) – 50.9/39.6 (F-350); 68.8/64.8 (F-450/F-550)

Wheels

Number of studs – 8 (F-350); 10 (F-450/F-550)
Bolt-circle diameter – 6.69" (F-350 SRW); 7.87" (F-350 DRW); 8.85" (F-450/F-550)



XL	XLT	LARIAT		XL	XLT	LARIAT		XL	XLT	LARIAT		
			Mechanical								Interior	
S	S		Alternator - 200-amp extra-heavy-duty ¹ (6.2L gas engine)	O	O		Speed limitation - 65-mph governed top speed (Fleet only)	S			AM/FM stereo with 4 speakers (Regular Cab)	
S	S		Alternator - 220-amp extra-heavy-duty ¹ (diesel engine)	O	S	S	Speed limitation - 75-mph governed top speed (Fleet only)	S			AM/FM stereo with 6 speakers (SuperCab/Crew Cab)	
S	S		Alternator - 240-amp heavy-duty ¹ (6.8L gas engine)	S	S		Trailer brake controller with SmartTrailer Tow Connector ¹	P	S		AM/FM stereo/single-CD player with MP3 capability and 4 speakers (Regular Cab)	
O	O	S	Alternator - 240-amp extra-extra-heavy-duty ¹ (6.2L gas engine)	O	O	S	Transfer case - Manual ¹ (4x4)	P	S		AM/FM stereo/single-CD player with MP3 capability and 6 speakers (SuperCab/Crew Cab)	
O	O	S	Alternator - Dual, 332-amp total ¹ (diesel engine)				Transfer case - Electronic shift-on-the-fly (ESOF) ¹ (4x4)					
O	O	O	Alternator - Dual extra-heavy-duty, 377-amp total ¹ (diesel engine)									
S	S	S	Axle - Rear, 3.73 non-limited-slip (F-350)				Driver-Assist Technology					
S	S	S	Axle - Rear, 4.10 non-limited-slip (F-450/F-550 diesel engine)	O	S		SYNC [®] Voice Recognition Communications and Entertainment System with 4.2" color LCD screen in center stack, 911 Assist, [®] AppLink [®] and 1 smart-charging USB port ¹	S			Audio System from Sony [®] with AM/FM stereo/single-CD player with MP3 capability, 10 speakers and HD Radio [™] Technology	
S	S		Axle - Rear, 4.88 non-limited-slip (F-450/F-550 gas engine)				SYNC 3 with 8" color LCD capacitive touchscreen in center stack, 911 Assist, AppLink, Apple CarPlay [™] compatibility, Android Auto [™] compatibility, and 2 smart-charging USB ports ¹	O	S	S	SiriusXM [®] Satellite Radio ¹ with 6-month trial subscription ² (adds 1 speaker on XLT only)	
O	O	O	Axle - Rear, 4.10 limited-slip (DRW diesel engine)							O	O	Voice-activated Navigation System ¹ with integrated SiriusXM Traffic and Travel Link [®] with 5-year subscription ²
O	O	O	Axle - Rear, 4.30 limited-slip ¹ (F-350 DRW gas engine and F-450/F-550 diesel engine)							S		2.3" productivity screen in instrument cluster
O	O	O	Axle - Rear, 4.88 limited-slip ¹ (F-450/F-550 gas engine; F-550 diesel engine)	S			Seating			S		4.2" LCD productivity screen in instrument cluster ¹
O	O	O	Axle - Rear, 3.73 electronic-locking (SRW)		S	S	2-way adjustable driver and right-front-passenger head restraints			S		8" configurable color LCD productivity screen in instrument cluster
O	O	O	Axle - Rear, 4.30 electronic-locking (SRW gas engine)		S		4-way adjustable driver and right-front-passenger head restraints			O	O	110V/400W power outlet, 1 in instrument panel; also includes 1 rear-facing on the flow-through center console, if equipped ¹
S			Battery - 650-CCA, 72-amp-hr, single (6.2L gas engine)				Heavy-duty vinyl 40/20/40 split front seat with 2-way manual seat adjust, driver's side manual lumbar, and folding armrest with cupholders and storage			P	S	Accessory delay for power features
S	S		Battery - 750-CCA, 78-amp-hr, single ¹ (6.2L gas engine)	O			Cloth 40/20/40 split front seat with 2-way manual seat adjust, driver's side manual lumbar, and folding armrest with cupholders and storage			P	S	Cruise control with steering wheel-mounted controls (optional on XL for Fleet only)
S	S	S	Battery - 750-CCA, 78-amp-hr, dual (diesel engine)	O			Heavy-duty vinyl front bucket seats with mini-console and driver's side manual lumbar (Regular Cab)			S		Door trim - Sandalwood film appliqué
O	O	O	Battery - 750-CCA, 78-amp-hr, dual (F-350 with 6.2L gas engine)	O			Cloth front bucket seats with mini-console and driver's side manual lumbar			S		Dual-zone electronic automatic temperature control
S	S	S	Drivetrain - 4x2		S		Cloth 40/20/40 split front seat, center under-seat lockable storage with 12V powerpoint, 2-way manual seat adjust, driver's side manual lumbar, and folding armrest with cupholders and storage			S	O	Flooring - Black vinyl/carpet delete
O	O	O	Drivetrain - 4x4				Cloth 40/20/40 split front seat, center under-seat lockable storage with 12V powerpoint, 2-way manual seat adjust, driver's side manual lumbar, and folding armrest with cupholders and storage			S	S	Flooring - Carpet with front and rear carpeted floor mats
O	O	O	Engine block heater (standard where required)				Cloth front bucket seats with 8-way power driver seat, 2-way manual passenger seat, driver's side manual lumbar, and flow-through center console with lockable storage and 2 rear-facing powerpoints ¹ (SuperCab/Crew Cab)			S	S	Flooring - Floor liners ¹ (SuperCab/Crew Cab)
O	O	O	Engine idle shutdown - 5-minute (diesel engine)	O			Leather-trimmed heated and cooled 10-way power front bucket seats and flow-through center console with lockable storage and 2 rear-facing powerpoints			S	S	Mirror - Day/night rearview
O	O	O	Engine idle shutdown - 10-minute (diesel engine)				Leather-trimmed heated and cooled 10-way power 40/20/40 split front seat, center under-seat lockable storage with 12V powerpoint, and folding armrest with cupholders and storage			P	S	Mirror - Auto-dimming rearview
O	O	O	Engine idle shutdown - 15-minute (diesel engine)				Heavy-duty vinyl 60/40 split flip-up rear seat			P	S	Power-adjustable pedals (SuperCab/Crew Cab; optional on XLT for Fleet only)
O	O	O	Engine idle shutdown - 20-minute (diesel engine)				Cloth 60/40 split flip-up rear seat			O	O	Rapid-heat supplemental cab heater ¹ (diesel engine; standard where required)
O	O	O	Frame extension - Aft-axle (F-450/F-550 145" and 169" wheelbases)				Premium vinyl 60/40 split flip-up rear seat (SuperCab)			S	S	Steering wheel - Black urethane
5/0	5/0	5/0	Fuel tank - 26.5-gallon mid-ship ¹ (standard on F-350 SRW with 17" wheels)				Leather-trimmed 60/40 split flip-up rear seat (Crew Cab)			S		Steering wheel - Color-coordinated leather-wrapped
S	S	S	Fuel tank - 40-gallon aft-of-axle ¹				Rear under-seat fold-flat storage, lockable and partitionable, with 12V powerpoint (Crew Cab)			O	O	Vehicle Safe by Console Vault ^{1,3}
O	O	O	Fuel tank - Dual diesel ¹ with 40-gallon aft-of-axle and 26.5-gallon mid-ship tanks (DRW diesel engine)				Rear under-seat storage with 12V powerpoint (SuperCab)			S		Visors - Adjustable driver with pocket and front-passenger with mirror
O	O	O	Jack - 2-ton mechanical (SRW)				Fold-down rear-seat center armrest with dual integrated cupholders (Crew Cab)			S		Visors - Adjustable driver and front-passenger with covered mirrors
O	O	O	Jack - 4-ton hydraulic (F-350 DRW)				Heated rear outboard seats ¹ (Crew Cab)			S		Visors - Adjustable driver and front-passenger with covered and illuminated vanity mirrors
O	O	O	Jack - 6-ton hydraulic (F-450/F-550)							S	S	Window - Rear, fixed
O	O	O	Operator-commanded exhaust filter regeneration with active regeneration inhibit (diesel engine)							O	O	Window - Rear, fixed with defroster and privacy glass
O	O	O	Power takeoff (PTO) provision with transmission-mounted live-drive with mobile and stationary modes; includes split-shaft capability with diesel engine only ¹ (PTO port located on driver's side; split-shaft capability included with diesel engine only; torque output is 250 lb.-ft. for diesel and up to 250 lb.-ft. for gas)							O	O	Window - Rear, power-sliding with defroster and privacy glass ¹ (SuperCab/Crew Cab)
O	O	O	Programmable Upfitter Interface Module							S		Windows - Manual
O	O	O	Spare wheel, tire and hydraulic jack (excludes carrier)							P	S	Windows - Power with front one-touch-up/-down feature



XL	XLT	LARIAT		XL	XLT	LARIAT		XL	XLT	LARIAT	
			Exterior				Safety & Security				6.2L CNG/Propane Gaseous Engine Prep Package: hardened engine intake valves and valve seats, and bi-fuel manifold
0	0	0	Black platform running boards	0	0	S	Advanced Security Pack with inclination/intrusion sensors ²	0	0	0	6.8L CNG/Propane Gaseous Engine Prep Package: hardened engine intake valves and valve seats
S			Bumper – Black-painted steel	0			Airbags – Front-seat side and side-curtain airbag delete ² (Fleet only)	0			Heavy-Service Front Suspension Package ² : front springs upgrade (unless maximum springs have been computer-selected as included equipment)
P	S	S	Bumper – Chrome	0			Airbags – Right-front-passenger front, front-seat side and side-curtain airbags delete ² (Fleet only)	0	0	0	Extra-Heavy-Service Front Suspension Package ² : front springs upgrade (unless maximum springs have been computer-selected as included equipment)
S	S		Door handles – Black	0	0	0	Individual Tire Pressure Monitoring System delete (F-350 SRW; Fleet only)	0	0	0	Extra-Heavy-Duty Front-End Suspension Package ² (F-450/F-550): upgraded front axle, and 7,500-lb. front springs/GAWR rating
			Door handles – Body-color	0	0	0	Inflatable rear safety belts in outboard seating positions ² (Crew Cab)	0	0	0	High-Capacity Trailer Tow Package ² (F-450/F-550 diesel engine): trailer brake wiring kit, upgraded rear axle, and increased GCWR of 35,000 lbs. on F-450 and 40,000 lbs. on F-550
0	0	0	Exterior backup alarm by ECCO ^{®1}	0	0	0	MyKey [®] technology to help encourage responsible driving	0	0	0	Low Deflection Package ² (F-450/F-550): 2" spacer blocks (recommended for rear-biased loading)
			Fog lamps	P	S	S	Perimeter alarm	0	0	0	Payload Plus Upgrade Package ² (F-550 145" WB gas engine): upgraded frame, upgraded rear axle, low-deflection/high-capacity rear springs, 14,706-lb. max. rear GAWR, and 19,500-lb. GVWR
0	0	0	Ford Telematics™ powered by Telogis ^{®1} – Fleet-tracking system (includes 1 year of service)	P	S	S	Remote Keyless Entry System with 2 integrated keyhead transmitter remotes	0	0	0	Snow Plow Prep Package ² : computer-selected front springs for snowplow application, and dual alternator (332-amp total)
S			Glass – Solar-tint	P	S	S	SecuriLock [®] Passive Anti-Theft System	0			XL Decor Group (Fleet only): bright center cap on wheels (SRW only), and chrome bumper
0	S	S	Glass – Privacy-tint on rear doors and rear window; solar-tint on windshield and front doors ²	0			Packages	0			XL Value Package: 4.2" center stack screen, AM/FM stereo/single-CD player with MP3 capability, cruise control, bright center cap on wheels (SRW only), and chrome bumper
S			Grille – Black	%	0	0	Payload Downgrade Package² : 9,800-lb. GVWR (F-350 SRW 17" wheels), 10,000-lb. GVWR (F-350 SRW 18" wheels), 15,000-lb. GVWR (F-450), 17,500-lb. GVWR (F-550)	0			XLT Value Package: power-adjustable pedals (SuperCab/Crew Cab), 8-way power driver's seat (SuperCab/Crew Cab), and SecuriCode keyless entry keypad
	S		Grille – Chrome 2-bar insert with Carbon Black surround	0			Power Equipment Group : accessory delay for power features; manually telescoping trailer tow mirrors with 2-way fold, power/heated glass, heated manual spotter mirrors, and integrated clearance lamps and turn signal indicators; perimeter alarm; power locks with autolock/unlock; MyKey [®] ; power windows with front one-touch-up/-down feature; and Remote Keyless Entry System with 2 integrated keyhead transmitter remotes	0			LARIAT Value Package: easy-entry/-exit driver's seat with memory, power-adjustable pedals with memory, PowerScope trailer tow mirrors with memory, and Remote Start System
	S		Grille – Chrome 2-bar insert with chrome surround	0			Trailer Tow Package² : aftermarket trailer brake wiring kit (trailer brake controller not included)	0			
0	0	0	Hood deflector, black molded	0			Ambulance Prep Package (Fleet only; requires diesel engine): dual extra-heavy-duty alternators, 7,000-lb. max. front springs/GAWR rating for configuration selected, operator-commanded exhaust filter regeneration, and wide-track axle (F-350 DRW)	0	0	0	
0	0	0	Lighting – Amber LED warning strobes with CHMSL light bar and 2 hood-mounted lights by SoundOff Signal ^{®1,2}	0			Ambulance Prep Package with EPA Special Emissions (Fleet only; requires diesel engine): dual extra-heavy-duty alternators, 7,000-lb. max. front springs/GAWR rating for configuration selected, operator-commanded exhaust filter regeneration, wide-track axle (F-350 DRW), and federal emissions	0			
0	0	0	Lighting – Amber/white LED warning strobes with CHMSL light bar and 2 hood-mounted lights by SoundOff Signal ^{®1,2}	0			Fire/Rescue Prep Package with EPA Special Emissions (Fleet only; requires diesel engine): dual extra-heavy-duty alternators, 7,000-lb. max. front springs/GAWR rating for configuration selected, operator-commanded exhaust filter regeneration, and federal emissions	0			
0	0	0	Lighting – Center high-mounted stop lamp (CHMSL) ²	0			Payload Upgrade Package² (F-550 145" WB gas engine): upgraded frame, upgraded rear axle, and 19,000-lb. GVWR	0			
0	0	S	Lighting – Utility Lighting System (LED sideview mirror spotlights) ²	0			16,000-lb. GVWR Package² (F-450)	0			
S	S		Mirrors – Black sideview mirror caps	0							
	S		Mirrors – Body-color sideview mirror caps								
S			Mirrors – Manually telescoping trailer tow with 2-way fold and manual glass								
P	S		Mirrors – Manually telescoping trailer tow with 2-way fold, power/heated glass, heated manual spotter mirrors, and integrated clearance lamps and turn signal indicators								
0	S		Mirrors – PowerScope [®] power-telescoping/-folding trailer tow with power/heated glass, heated manual spotter mirrors, integrated clearance lamps, turn signal indicators, high-intensity LED security approach lamps, Utility Lighting System, and driver's side auto-dimming feature								
0	0		Non-configurable daytime running lamps (replaces standard configurable daytime running lamps; Fleet only)								
0	0	0	Rear View Camera and Prep Kit (includes loose camera, wiring bundle, and rearview mirror or center stack video display ²)								
0	0	0	Remote Start System ²								
	P	S	SecuriCode™ keyless entry keypad								
0	0	0	Skid plate for transfer case (SuperCab/Crew Cab 4x4)								
0	0	0	Splash guards – Front (F-350)								
0	0	0	Wheel-well liners, front								



EXTERIORS / INTERIORS

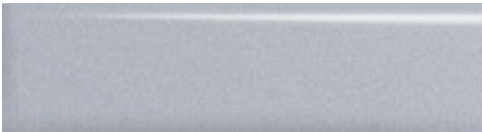
	XL	XLT	LARIAT
White Platinum Metallic Tri-coat ¹			5 6
Oxford White	1 2	3 4	5 6
Ingot Silver ²	1 2	3 4	5 6
White Gold ²		4	5 6
Stone Gray ²		3 4	5 6
Magma Red ²		4	5 6
Race Red	1 2	3 4	5 6
Ruby Red Metallic Tinted Clearcoat ¹		3 4	5 6
Blue Jeans ²	1 2	3 4	5 6
Magnetic ²	1 2	3	6
Shadow Black	1 2	3 4	5 6



White Platinum Metallic Tri-coat



Oxford White



Ingot Silver



White Gold



Stone Gray



Magma Red



Race Red



Ruby Red Metallic Tinted Clearcoat



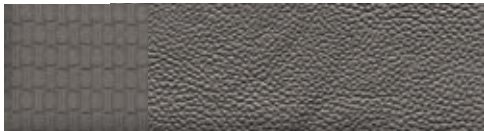
Blue Jeans



Magnetic

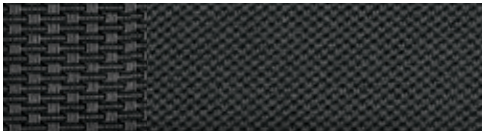


Shadow Black



Medium Earth Gray Vinyl

1



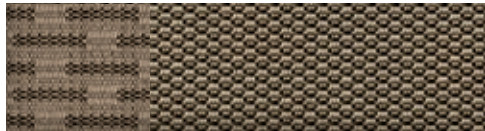
Dark Earth Gray Cloth

2



Medium Earth Gray Cloth

3



Medium Light Camel Cloth

4



Medium Light Camel Leather

5



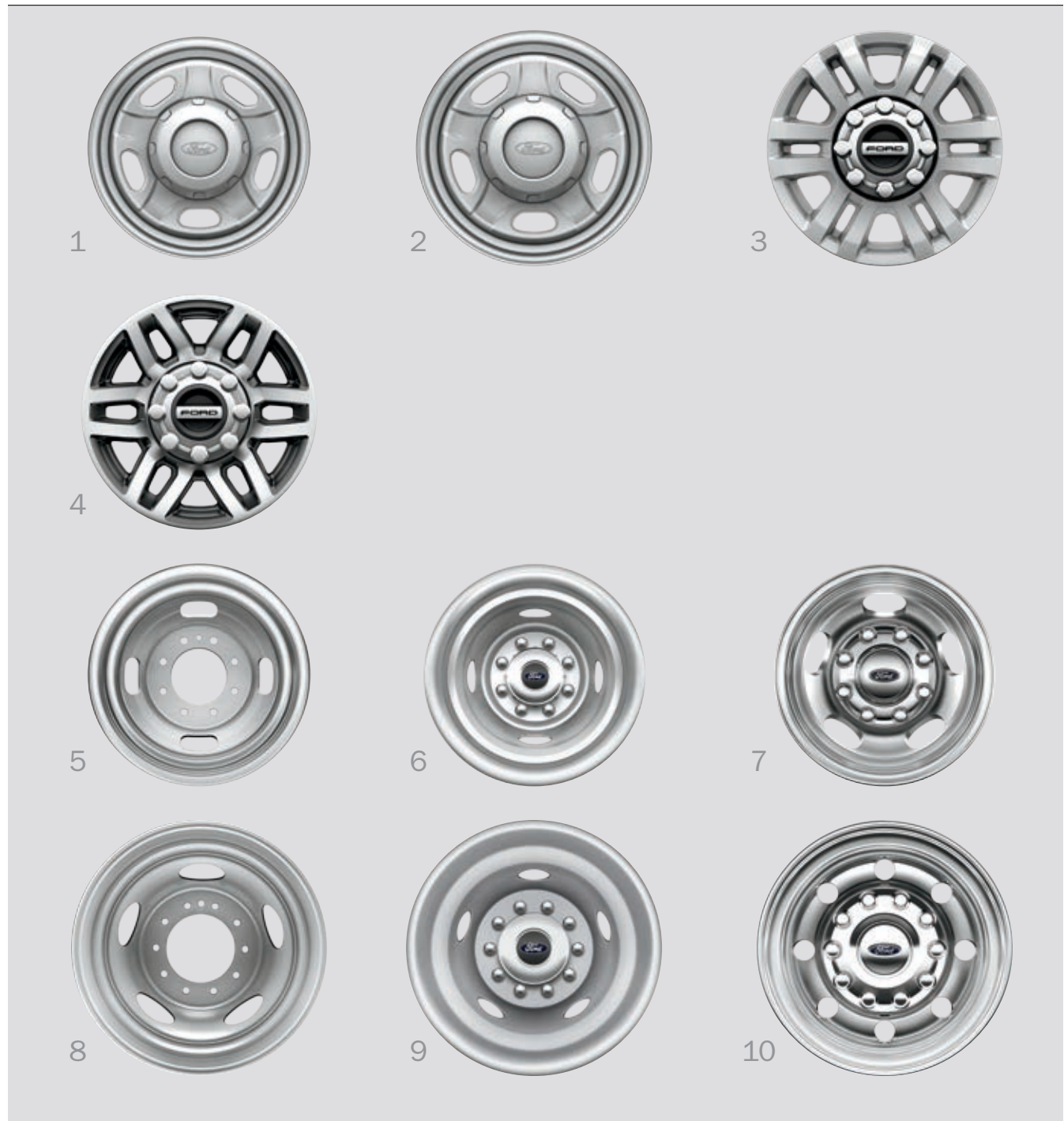
Black Leather

6



WHEELS / TIRES | S: Standard 0: Optional

	XL	XLT	LARIAT	
1	0	0		17" Argent-Painted Steel with Painted Center Cap (SRW)
2	S			18" Argent-Painted Steel with Painted Center Cap (SRW)
3		S		18" Cast-Aluminum with Bright Center Cap (SRW)
4			S	18" Bright-Machined Cast-Aluminum with Bright Center Cap (SRW)
5	S	S		17" Argent-Painted Steel without Center Cap (F-350 DRW)
6	0	0		17" Stainless Steel Covers, Front and Rear ¹ (F-350 DRW)
7	0	0	S	17" Polished Forged-Aluminum with Bright Center Cap ² (F-350 DRW)
8	S	S		19.5" Argent-Painted Steel without Center Cap (F-450/F-550)
9	0	0		19.5" Stainless Steel Covers, Front and Rear ¹ (F-450/F-550)
10		0	S	19.5" Polished Forged-Aluminum with Bright Center Cap ² (F-450/F-550)
	0	0		LT245/75R17E BSW all-season (SRW 4x2)
	S	S	S	LT245/75R17E BSW all-season (F-350 DRW)
	0	0		LT245/75R17E BSW all-terrain (SRW)
	0	0	0	LT245/75R17E BSW all-terrain (F-350 DRW)
	0	0	0	LT245/75R17 OWL all-terrain (F-350 DRW)
	0	0	0	LT265/70R17E OWL all-terrain (SRW)
	S	S	S	LT275/65R18E BSW all-season (SRW)
	0	0	0	LT275/70R18E BSW all-terrain plus (SRW 4x4)
	0	0	0	LT275/70R18E OWL all-terrain (SRW 4x4)
	S	S	S	225/70R19.5G BSW all-season (F-450/F-550)
	0	0	0	225/70R19.5G BSW traction (F-450/F-550; includes 2 all-season tires on front and 4 traction tires on rear)
	0	0	0	225/70R19.5G BSW max. traction (F-450/F-550 4x4; includes 2 traction tires on front and 4 traction tires on rear)



DIMENSIONS / WEIGHTS

	Regular Cab											
	F-350 SRW 4x2/4x4	F-350 DRW ¹ 4x2/4x4	F-350 DRW ¹ 4x2/4x4	F-450 DRW 4x2/4x4	F-450 DRW 4x2/4x4	F-450 DRW 4x2/4x4	F-450 DRW 4x2/4x4	F-450 DRW 4x2/4x4	F-550 DRW 4x2/4x4	F-550 DRW 4x2/4x4	F-550 DRW 4x2/4x4	F-550 DRW 4x2/4x4
Wheelbase	145.3"	145.3"	169.3"	145.3"	169.3"	193.3"	205.3"	145.3"	169.3"	193.3"	193.3"	205.3"
Cab-to-axle	60"	60"	84"	60"	84"	108"	120"	60"	84"	108"	108"	120"
Exterior												
Height												
Top of cab to ground	77.9"/81.0"	78.1"/81.0"	78.0"/80.9"	81.7"/81.5"	81.5"/81.3"	81.5"/81.4"	81.3"	81.7"/81.5"	81.7"/81.5"	81.7"/81.6"	81.5"	81.5"
Top of frame to ground	32.2"/34.3"	32.3"/34.2"	32.0"/33.8"	35.0"/35.1"	34.5"/34.6"	34.4"	34.4"	35.0"/35.1"	34.4"/34.5"	34.3"	34.3"	34.3"
Width												
Between frame rails	34.1"	34.1"	34.1"	34.2"	34.2"	34.2"	34.2"	34.2"	34.2"	34.2"	34.2"	34.2"
Axle clearance	8.6"/8.5"	7.9"/7.8"	7.9"	8.2"	8.3"	8.3"	8.3"	8.2"	8.3"	8.3"	8.3"	8.3"
Front track	68.3"	69.1"	69.1"	74.8"	74.8"	74.8"	74.8"	74.8"	74.8"	74.8"	74.8"	74.8"
Rear tire outside width	79.6"	92.2"	92.2"	93.9"	93.9"	93.9"	93.9"	93.9"	93.9"	93.9"	93.9"	93.9"
Overall length	230.7"	230.7"	254.8"	230.7"	254.8"	278.8"	290.7"	230.7"	254.8"	278.8"	278.8"	290.7"
Weights (lbs.)												
Max. GVWR ²	11,100/11,500	14,000	14,000	16,500	16,500	16,500	16,500	19,000	19,500	19,500	19,500	19,500
Max. payload ²	4,870/4,860	7,940/7,550	7,330/6,930	9,850/9,540	9,790/9,450	9,610/9,300	9,550/9,230	12,310/12,000	12,750/12,410	12,570/12,260	12,510/12,190	12,510/12,190

	SuperCab						Crew Cab					
	F-350 SRW 4x2/4x4	F-350 DRW ¹ 4x2/4x4	F-450 DRW 4x2/4x4	F-450 DRW 4x2/4x4	F-550 DRW 4x2/4x4	F-550 DRW 4x2/4x4	F-350 SRW 4x2/4x4	F-350 DRW ¹ 4x2/4x4	F-450 DRW 4x2/4x4	F-450 DRW 4x2/4x4	F-550 DRW 4x2/4x4	F-550 DRW 4x2/4x4
Wheelbase	167.9"	167.9"	167.9"	191.9"	167.9"	191.9"	179.8"	179.8"	179.8"	203.8"	179.8"	203.8"
Cab-to-axle	60"	60"	60"	84"	60"	84"	60"	60"	60"	84"	60"	84"
Exterior												
Height												
Top of cab to ground	78.3"/81.0"	78.5"/81.2"	81.8"	81.8"/81.6"	82.0"/81.8"	81.8"	78.4"/81.2"	78.6"/81.2"	81.9"/81.8"	81.7"/81.8"	81.9"/81.8"	81.9"/81.7"
Top of frame to ground	31.9"/33.8"	32.0"/33.7"	34.6"/34.3"	34.6"/34.4"	34.5"/34.3"	34.6"/34.3"	31.7"/33.5"	31.9"/33.7"	34.4"/34.3"	34.5"/34.3"	34.4"/34.3"	34.4"/34.3"
Width												
Between frame rails	34.1"	34.1"	34.2"	34.2"	34.2"	34.2"	34.1"	34.1"	34.2"	34.2"	34.2"	34.2"
Axle clearance	8.6"	7.9"/7.8"	8.3"	8.2"	8.3"	8.2"	8.6"	7.8"	8.2"	8.2"	8.2"	8.2"
Front track	68.3"	69.1"	74.8"	74.8"	74.8"	74.8"	68.3"	69.1"	74.8"	74.8"	74.8"	74.8"
Rear tire outside width	79.6"	92.2"	93.9"	93.9"	93.9"	93.9"	79.6"	92.2"	93.9"	93.9"	93.9"	93.9"
Overall length	253.3"	253.3"	253.3"	277.4"	253.3"	277.4"	265.2"	265.2"	265.2"	289.2"	265.2"	289.2"
Weights (lbs.)												
Max. GVWR ²	11,500	14,000	16,500	16,500	19,500	19,500	11,500	14,000	16,500	16,500	19,500	19,500
Max. payload ²	4,970/4,940	7,600/7,200	9,550/9,190	9,360/9,030	12,510/12,150	12,320/11,990	4,830/4,820	7,460/7,040	9,380/9,070	9,230/8,940	12,340/12,030	12,190/11,900

Interior (front/rear)	Regular Cab	SuperCab	Crew Cab
Head room	40.8"/ –	40.8"/40.3"	40.8"/40.4"
Leg room (max.)	43.9"/ –	43.9"/33.5"	43.9"/43.6"
Hip room	62.5"/ –	62.5"/64.7"	62.5"/64.7"
Shoulder room	66.7"/ –	66.7"/65.8"	66.7"/65.9"



5TH - WHEEL TOWING

Maximum Loaded Trailer Weight Ratings (lbs.)¹

Engine	Axle Ratio	GCWR	F-350 SRW 4x2	F-350 SRW 4x4	F-350 DRW 4x2	F-350 DRW 4x4	F-450 DRW 4x2	F-450 DRW 4x4	F-550 DRW 4x2	F-550 DRW 4x4
Regular Cab 6.2L 2-valve Gas V8 FFV	3.73	19,500	13,100	12,700	—	—	—	—	—	—
	4.30	20,000	—	—	13,200	12,800	—	—	—	—
6.8L 3-valve Gas V10 6.7L Diesel V8	4.88	23,000	16,600	16,200	—	—	—	—	—	—
	3.73	23,500	—	—	16,700	16,300	—	—	—	—
6.8L 3-valve Gas V10 6.7L Diesel V8	4.88	28,000	—	—	—	—	20,600	20,300	20,600	20,300
	3.73	26,500	19,200	18,700	—	—	—	—	—	—
	4.10	31,000	—	—	23,500	23,100	—	—	—	—
	4.30	32,000	—	—	24,500	24,100	23,900	23,600	23,900	23,600
6.8L 3-valve Gas V10 6.7L Diesel V8	4.30	34,500	—	—	—	—	26,400	26,100	—	—
	4.88	35,000 ²	—	—	—	—	—	—	26,900	26,600
SuperCab 6.2L 2-valve Gas V8 FFV	3.73	32,000	—	—	—	—	—	—	23,900	23,500
	4.30	40,000 ²	—	—	—	—	—	—	31,900 ²	31,500 ²
6.8L 3-valve Gas V10 6.7L Diesel V8	4.88	28,000	—	—	—	—	20,300	20,000	20,300	20,000
	3.73	26,500	18,800	18,400	—	—	—	—	—	—
6.8L 3-valve Gas V10 6.7L Diesel V8	4.10	31,000	—	—	23,100	22,700	—	—	—	—
	4.30	32,000	—	—	24,100	23,700	23,600	23,200	23,600	23,200
	4.30	34,500	—	—	—	—	26,100	25,700	—	—
	4.88	35,000	—	—	—	—	—	—	26,600	26,200
Crew Cab 6.2L 2-valve Gas V8 FFV	3.73	32,000	—	—	—	—	—	—	23,500	23,200
	4.30	40,000 ²	—	—	—	—	—	—	31,500 ²	31,200 ²
6.8L 3-valve Gas V10 6.7L Diesel V8	4.88	28,000	—	—	—	—	20,200	19,900	20,200	19,900
	3.73	26,500	18,600	18,200	—	—	—	—	—	—
6.8L 3-valve Gas V10 6.7L Diesel V8	4.10	31,000	—	—	23,000	22,600	—	—	—	—
	4.30	32,000	—	—	24,000	23,600	23,400	23,100	23,400	23,100
	4.30	34,500	—	—	—	—	25,900	25,600	—	—
	4.88	35,000	—	—	—	—	—	—	26,400	26,100
6.8L 3-valve Gas V10 6.7L Diesel V8	4.88	32,000	—	—	—	—	—	—	23,400	23,100
	4.88	40,000 ²	—	—	—	—	—	—	31,400 ²	31,100 ²

¹F-350 DRW/F-450/F-550 weights shown are for 145.3" wheelbase Regular Cab, 167.9" wheelbase SuperCab or 179.8" wheelbase Crew Cab models. For 169.3", 191.9", 193.3", 203.8" and 205.3" wheelbase models, weights may be somewhat less (usually not more than 200 lbs., or 400 lbs. with 205.3" wheelbase). ²Requires High-Capacity Trailer Tow Package.

Load rating represents maximum allowable weight of people, cargo and body equipment and is reduced by the weight of optional equipment.

5th-Wheel Towing Notes: Trailer weights shown assume 400 lbs.-800 lbs. second-unit body weight. Be sure combined weight of vehicle and trailer does not exceed listed GCWR. Trailer kingpin load weight should be 15% of total loaded trailer weight. Make sure that the vehicle payload (reduced by option weight) will accommodate trailer kingpin load weight and the weight of passengers and cargo added to the towing vehicle. The addition of trailer kingpin load weight, and the weight of passengers and cargo, cannot cause vehicle weights to exceed the rear GAWR (Gross Axle Weight Rating) or GVWR (Gross Vehicle Weight Rating). These ratings can be found on the vehicle's Safety Compliance Certification Label. See your Ford Dealer for conventional trailer weights.

New Vehicle Limited Warranty. We want your Ford F-Series Super Duty® Chassis Cab ownership experience to be the best it can be. Under this warranty, your new vehicle comes with 3-year/36,000-mile bumper-to-bumper coverage, 5-year/60,000-mile Powertrain Warranty coverage, 5-year/60,000-mile safety restraint coverage, and 5-year/unlimited-mile corrosion (perforation) coverage – all with no deductible. The Ford 6.7L Power Stroke® diesel engine gets 5-year/100,000-mile warranty coverage. Please ask your Ford Dealer for a copy of this limited warranty.

Roadside Assistance. Covers your vehicle for 5 years or 60,000 miles, so you have the security of knowing that help may be only a phone call away should you run out of fuel, lock yourself out of the vehicle or need towing. Your Ford Dealer can provide complete details on all of these advantages.

Ford Commercial Vehicle Center. Each of the 678 dealerships in our Commercial Vehicle Center (CVC) network is committed to providing quality commercial-oriented products and service, as well as special financing and billing arrangements, to businesses that rely on Ford products. As a CVC customer, your business vehicles receive priority service at your CVC dealership to help get your vehicle back on the road quickly.

Financial Services. Our commercial purchase plans and lines of credit offer attractive rates, negotiable terms and business-friendly options. If you prefer to lease, our CommercialLeaseSM programs offer a wide variety of package options to meet your needs. For additional information, please visit our website at fordcredit.com/comlend.

Ford Credit. Get the ride you want. Whether you plan to lease or finance, you'll find the choices that are right for you at Ford Credit. Ask your Ford Dealer for details or check us out at fordcredit.com.

Ford Protect™ Extended Service Plans. Whether you purchase or lease your Ford vehicle, insist on genuine Ford Protect extended service plans. Ford Protect has a variety of plans to give you peace-of-mind protection whether you want vehicle component or maintenance coverage. Plus, they are fully backed by Ford and honored at all Ford dealerships in the U.S., Canada and Mexico. When you visit your dealer, insist on genuine Ford Protect extended service plans.

Android, Android Auto and logos are trademarks of Google Inc. Apple and Apple CarPlay are trademarks of Apple Inc., registered in the U.S. and other countries. "HD Radio" and the HD Radio logo are proprietary trademarks of iBiquity Digital Corporation. Sirius, XM and all related marks and logos are trademarks of Sirius XM Radio Inc. Sony is a registered trademark of the Sony Corporation.

Comparisons based on competitive models (Class 3-5 Chassis Cabs based on Ford segmentation), publicly available information and Ford certification data at time of release. Vehicles may be shown with optional and aftermarket equipment. Features may be offered only in combination with other options or subject to additional ordering requirements/limitations. Dimensions and capacity ratings shown may vary due to optional features and/or production variability. Information is provided on an "as is" basis and could include technical, typographical or other errors. Ford makes no warranties, representations, or guarantees of any kind, express or implied, including but not limited to, accuracy, currency, or completeness, the operation of the information, materials, content, availability, and products. Ford reserves the right to change product specifications, pricing and equipment at any time without incurring obligations. Your Ford Dealer is the best source of the most up-to-date information on Ford vehicles. Body manufacturers are responsible for compliance certification of the completed vehicle. The Ford New Vehicle Limited Warranty and any government certification made by Ford shall cover only the vehicle as manufactured by Ford and shall not extend to any addition, modification or change of or to the vehicle by the Ford Authorized Pool Account.